



28TH W I N T E R
UNIVERSIADE
JANUARY 29 - FEBRUARY 8



★★★★★
Almaty 2017

TECHNICAL HANDBOOK

ICE HOCKEY WOMEN

JANUARY 2017



ALMATY 2017



Dear Participants,

On behalf of the International University Sports Federation, it is both a pleasure and an honour for me to welcome you to the 28th Winter Universiade from 29 January to 8 February, 2017 in Almaty, Kazakhstan.

The technical handbooks probably belong to some of the most useful documents during the entire period of the Universiade. That is why so much effort is put into their preparation. Those manuals are always reflecting the amount of work that has been done to prepare such

multi-sport events. The investments in terms of infrastructure and sport facilities are just amazing and we all hope that you will enjoy the remarkable competition conditions that Kazakhstan and the city of Almaty created for all participants.

We therefore would like to thank all parties that worked in very close co-operation with the Organising Committee of the Almaty Winter Universiade and the Student Sports Federation of the Republic of Kazakhstan.

I would like to underline the efforts made throughout the last month by the Technical Delegates of the FISU International Technical Committee for the Winter Universiade. They have worked continuously in close co-operation with the competition managers of the Organising Committee and the International Sports Federations to allow the students to compete in the best possible conditions in a country, which will be showing the magic of winter sports to the world.

We look forward to your participation and we are sure that you will find in this manual all the necessary information that will help you to participate in the competitions in a smooth and proper manner.

Together with the entire FISU Family, I wish you all the best for a most successful 28th Winter Universiade.

**Oleg Matytsin,
FISU President**



Dear Friends,

It is a pleasure and honour for Almaty to host the 28th Winter Universiade 2017, which has been one of the largest and prestigious multi-sporting event in the world for more than a half a century. We are pleased to extend a warm welcome to the representatives of all the countries or regions participating in the 28th Winter Universiade.

It is the first time for Almaty to host the Winter Universiade and we will make everything possible to hold the competitions at the highest level.

The 28th Winter Universiade is the large image project for Almaty, and for our multinational country. As you know, our country has a successful experience in organizing international projects, forums, and we ensure making our best to hold this Winter Games.

We would like to highlight the efforts of the International University Sports Federation (FISU) to promote sports values and encourage sports practice in harmony with university spirit. The slogan of the Universiade is "Spread your wings!" It is hoped that it will encourage the youth participating in the competitions to succeed. We are in favour of promoting sports values, along with encouraging friendship, fraternity, fair-play and cooperation between students who will one day have responsibility and even hold key positions in politics, economics, industry and culture.

We are ready to welcome our guests and participants of the 28th Winter Universiade. Three new venues were built for this big event, which are the Athletes' Village for 5,000 people, Almaty Arena with 12,000 seats, and Halyk Arena with a 3,000 seating capacity.

As the successor to the Asian Games Universiade inherited the sports facilities with modern equipment, developed infrastructure and updated cultural centers.

In 2011, Almaty hosted the 7th Asian Winter Games. For this event, the "Sunkar" International Ski-Jumping Complex and the "Alatau" Cross-Country Skiing and Biathlon Stadium were built. Furthermore, the "Medeu" High-Mountain Ice Rink, the "Shymbulak" Ski Resort, and the "Baluan Sholak" Sports Palace were modernized. All these venues are essential elements of the sports infrastructure of Kazakhstan.

We would like to assure that your stay in Almaty will be comfortable and exciting, your expectations will be met and you will come home enriched, with new experience and friendships.

We sincerely believe that the 28th Winter Universiade which became popular around the world will unite a set of the countries on this sport event. The cultural content, the scope and the level of organization of the event will allow you to immerse in the rich history, national traditions, and enjoy the special flavor of our country.

Imangali Tasmagambetov,
OC President

TABLE OF CONTENT

1. INTERNATIONAL AND NATIONAL SPORTS FEDERATIONS	6
2. FISU INTERNATIONAL TECHNICAL COMMITTEE	7
3. ORGANISING COMMITTEE STRUCTURAL CHART	8
4. GENERAL INFORMATION	9
4.1. 28 TH WINTER UNIVERSIADE ALMATY	9
4.2. 28 TH WINTER UNIVERSIADE 2017 COMPETITION SCHEDULE	9
4.3. OPENING AND CLOSING CEREMONIES	9
5. COMPETITION INFORMATION	11
5.1. TECHNICAL COMMITTEE	11
5.2. INTERNATIONAL TECHNICAL OFFICIALS	11
5.3. ICE HOCKEY WOMEN STRUCTURAL CHART	12
5.4. TECHNICAL REGULATIONS	13
5.5. COMPETITION FORMAT	14
5.6. COMPETITION AND TRAINING VENUE INFORMATION	22
5.7. ICE HOCKEY WOMEN COMPETITION SCHEDULE	24
5.8. TRAINING SCHEDULE	24
5.9. TECHNICAL MEETINGS	27
5.10. ICE HOCKEY TEAM UNIFORMS	27
5.11. DOPING CONTROL	27
5.12. AWARDS & MEDALS	29
5.13. PRESS INTERVIEWS	29
5.14. SPORT INFORMATION SERVICES	30
6. SERVICE INFORMATION	32
6.1. TEAM SERVICES	32
6.2. ACCREDITATION	32
6.3. TRANSPORTATION	32
6.4. MEDICAL SERVICES	33
7. OC CONTACTS	33
8. APPENDICES	34
8.1. 28 TH WINTER UNIVERSIADE 2017 COMPETITION SCHEDULE	34
8.2. VENUE LAYOUTS	35
8.3. DAY BY DAY SCHEDULE	40
8.4. ATHLETES' VILLAGE MAP	46
8.5. ALMATY CITY MAP	47



ABBREVIATIONS

ADAMS	Anti-doping Administration and Management System
AV	Athletes' Village
CIC	FISU International Control Committee
CMI	FISU International Medical Committee
CT	Technical Committee of FISU
CTI-UH	International Technical Committee for the Winter Universiade
EC	Executive Committee of FISU
FISU	International University Sports Federation
HOD	Head of Delegation
IIHF	International Ice Hockey Federation
ISF	International Sports Federation
ITO	International Technical Officials
KazNADC	Kazakhstan National Anti-Doping Centre
NSF	National Sport Federation
NTO	National Technical Officials
NUSF	National University Sports Federation
OC	Organising Committee of the Winter Universiade
SIC	Sport Information Centre
SID	Sport Information Desk
TD	Technical Delegate
TO	Technical Officials
TUE	Therapeutic Use Exemption
WADA	World Anti-Doping Agency
WU	Winter Universiade
WUAOC	Winter Universiade Almaty Organising Committee

1. INTERNATIONAL AND NATIONAL SPORTS FEDERATIONS

INTERNATIONAL UNIVERSITY SPORTS FEDERATION (FISU)

President	Mr. Oleg MATYTSIN (RUS)
Secretary General / CEO	Mr. Eric SAINTROND (BEL)
Address	Maison du Sport International, Avenue de Rhodanie 54, CH-1007 Lausanne, Switzerland
Phone	+41 (0) 21 613 0810
Fax	+41 (0) 21 601 5612
E-mail	fisu@fisunet
Website	www.fisu.net

INTERNATIONAL ICE HOCKEY FEDERATION (IIHF)

President	Mr. René FASEL (SUI)
Secretary General / CEO	MR. Horst LICHTNER (GER)
Address	Brandschenkestrasse 50, Postfach 1817, 8027 Zurich, Switzerland
Phone	+41.44.562 22 00
Fax	+41.44.562 22 29
E-mail	office@iihf.com
Website	www.iihf.com

STUDENT SPORTS FEDERATION OF THE REPUBLIC OF KAZAKHSTAN

President	Mr. Kayrat ZAKIRYANOV (KAZ)
Secretary General / CEO	Mr. Zhasnur AKEDILOV (KAZ)
Address	Abay ave. 83/105, 050022 Almaty, Kazakhstan
Phone	+7 (727) 292 10 90
Fax	+7 (727) 239 06 51
E-mail	nssf.kaz@mail.ru
Website	www.fnsu.kz

KAZAKHSTAN ICE HOCKEY FEDERATION (KIHf)

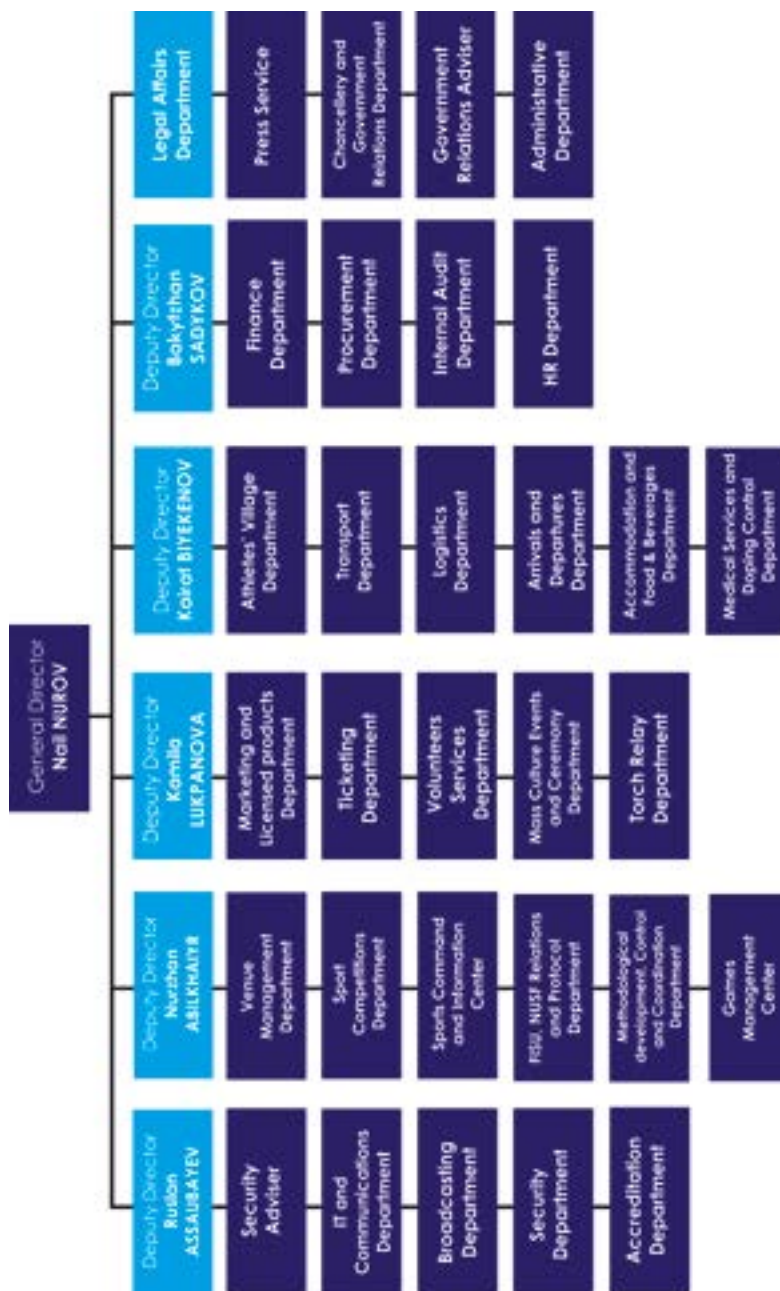
President	Mr. Askar MAMIN (KAZ)
CEO	Mr. Yuriy ZVEREV (KAZ)
Secretary General	Mr. Gleb KARATAYEV (KAZ)
Address	Kunayev street 12/1, office 508, 010017 Astana, Kazakhstan
Phone	+7 (7172) 60 50 41
Fax	+7 (7172) 60 50 42
E-mail	office@icehockey.kz
Website	www.icehockey.kz



2. FISU INTERNATIONAL TECHNICAL COMMITTEE FOR THE WINTER UNIVERSIADE (CTI-UH)

POSITION	FIRST NAME	LAST NAME	COUNTRY
FISU CTI-UH Chair	Roger	ROTH	SUI
FISU CTI-UH Vice Chair	Robert	PHILIP	CAN
FISU Technical Delegate Alpine Skiing	Matjaz	KRANJC	SLO
FISU Technical Delegate Biathlon	Ondrej	RYBAR	CZE
FISU Technical Delegate Cross-Country Skiing	Zofia Stefania	KIELPINSKA	POL
FISU Technical Delegate Curling	Jeanette	JOHNSTON	GBR
FISU Technical Delegate Figure Skating	Marie	LUNDMARK	FIN
FISU Technical Delegate Freestyle Skiing	Magnus	FERRY	SWE
FISU Technical Delegate Ice Hockey	Reto	BERTOLOTTI	SUI
FISU Technical Delegate Ice Hockey	Jarmo	JALARVO	FIN
FISU Technical Delegate Nordic Combined	Karl	LUSTENBERGER	SUI
FISU Technical Delegate Short Track Speed Skating	Nam-Hwan	PARK	KOR
FISU Technical Delegate Ski Jumping	Paul	GANZENHUBER	AUT
FISU Technical Delegate Snowboard	Ola	SUNDEKVIST	SWE
FISU Technical Delegate Speed Skating	Sergio	ANESI	ITA

3. ORGANISING COMMITTEE STRUCTURAL CHART





4. GENERAL INFORMATION

4.1. 28TH WINTER UNIVERSIADE ALMATY

Date:	29 January – 8 February 2017
Location:	Almaty, Republic of Kazakhstan
Sports Programme:	12 Sports (8 Compulsory / 4 Optional) with 86 events
Venues	9 Training and Competition venues

4.2. 28TH WINTER UNIVERSIADE 2017 COMPETITION SCHEDULE

Please refer to Appendix 7.1

4.3. OPENING AND CLOSING CEREMONIES

4.3.1. OPENING CEREMONY

Date:	January 29, 2017
Location:	Almaty Arena
Time:	19:00 to 21:40

4.3.2. CLOSING CEREMONY

Date:	February 8, 2017
Location:	Almaty Arena
Time:	19:00 to 21:40



5. COMPETITION INFORMATION

5.1. TECHNICAL COMMITTEE

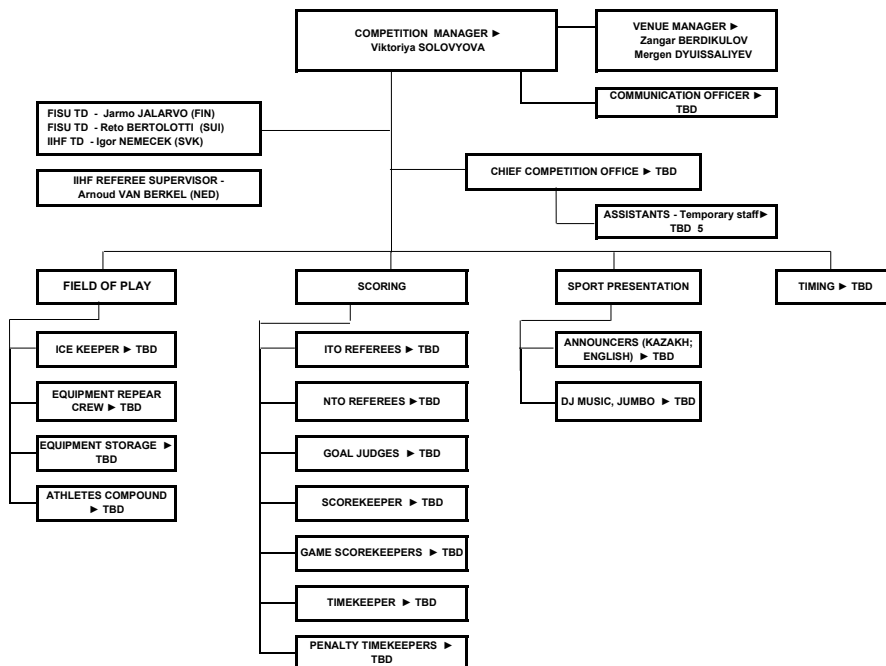
FISU Technical Delegate	Jarmo JALARVO (FIN)
FISU Technical Delegate	Reto BERTOLOTI (SUI)
IIHF Technical Delegate	Igor NEMECEK (SVK)
Competition Manager	Viktoriya SOLOVYOVA (KAZ)
Additional Experts	To be nominated at the 1st General Technical Meeting, if needed

5.2. INTERNATIONAL TECHNICAL OFFICIALS

IIHF Supervisors	Arnoud VAN BERKEL (NED)
Referee	Michelle STAPLETON (CAN)
Referee	Maria RAABYE FUCHSEL (DEN)
Referee	Anniina NURMI (FIN)
Referee	Olga STEINBERG (RUS)
Referee	Terese BERGECLIFF (SWE)
Referee	Kelly Elizabeth COOKE (USA)
Linesman	Jennifer GUENETTE (CAN)
Linesman	Yue FU (CHN)
Linesman	Lorna BERESFORD (GBR)
Linesman	Oksana SHESTAKOVA (KAZ)
Linesman	Julia JOHANSSON (SWE)
Linesman	Kristin Ann MOORE (USA)

5.3. ICE HOCKEY WOMEN STRUCTURAL CHART

STRUCTURAL CHART IH WOMEN B. SHOLAK ICE HOCKEY ARENA





5.4. TECHNICAL REGULATIONS

The events will be organised in accordance with the most recent regulations of the International Ice Hockey Federation (IIHF), except when specifically amended with the WU 2017 Regulations.

The programme includes the following events:

Women's tournament
maximum seven (7) teams

On ice officiating system: "four man system" (two referees and two linesmen). FISU TDs may, at their sole discretion, apply the (1) referee and two (2) linesmen system for games in the Round Robin.

Each country is authorised to enter a men's team and/or a women's team comprised of twenty (20) players and three (3) goalkeepers.

At the first General Technical Meeting, the Head of Delegation or his/her representative shall confirm and sign the official list of competitors.

No player or team official under a current suspension from FISU, IIHF or the national federation of his/her country may take part in the tournament.

5.4.1. PROTEST AND APPEAL

Any protest of a sport or disciplinary nature must reach the Jury or other proper authority according to the regulations laid down by the IIHF. Such protest must be accompanied by a deposit, the amount of which is set in line

with the ISF regulations, if not otherwise specified in the technical regulations of concerned sport.

Any sport disciplinary situation, which cannot be satisfactorily resolved by the sport technical committees and the sport specific disciplinary regulations, will be reported to the FISU Disciplinary Committee for further action to be taken.

Where appropriate, a report will be sent to the ISF concerned Committee.

Each Head of Delegation or his/her deputies are authorized to lodge an appeal against the decision of the Jury. This appeal must be submitted in writing to the Jury of Appeal or proper authority in accordance with the regulation of the appropriate ISF.

5.5. COMPETITION FORMAT

5.5.1. ENTRY

Seven Countries have qualified to enter teams and participate in accordance with FISU WU2017 Regulations (Art. 11.6.1). The Teams Draw has been conducted during the HOD Meeting on 18 September 2016 in Almaty (KAZ):

One group of four teams and one group of three:

A	B
KAZ (1)	RUS (2)
CAN (4)	JPN (3)
CHN (5)	USA (6)
GBR (7)	

5.5.2. NUMBER OF PLAYERS ON THE GAME SHEET

Teams must enter on the game sheet and dress a minimum of 15 and maximum of 20 players plus 2 goalkeepers per game. The team list for each game shall be submitted to the official scorer (or representatives) not later than two hours before the start of each game.

In case, the goalkeeper is injured in the course of a game and is unable to continue playing the game, then the third goalkeeper must dress and take her place and will, accordingly, enter on the game sheet. Once replaced the goalkeeper may not return to the game.

5.5.3. FORMAT

The format of the Women's Tournament comprises:

1. PRELIMINARY ROUND played in two groups (9 games) from which four teams qualify directly to the semi-finals
2. SEMI-FINAL ROUND (2 games)
3. MEDAL ROUND (2 games)
4. CLASSIFICATION GAMES (3 games) to determine the final ranking for places 5 to 7

A game consists of three periods of 20 minutes (with two intermissions above 15 minutes, (if not otherwise decided in the Directorate) plus overtime and a penalty-shot shootout if required.

The teams will play a round robin within their group and will then be ranked 1-4, for Playoff round and 5-7 for Classification round, according to the results in accordance with IIHF regulations governing ranking and tie breaking when



two or more teams are tied on points.

The points system applicable to the PRELIMINARY ROUND:

In order to provide a fair balance between the groups when determining the ranking after the PRELIMINARY ROUND the following pointing system will be applied:

For group A – 4 teams (in accordance with IIHF regulations), points shall be awarded as follows:

- 3 points for the winning team at the conclusion of regulation time
- 1 point for both teams at the conclusion of regulation time if the game is tied
- An additional point earned for the team winning the game in a 5-minute overtime period, or the Penalty-Shot Shootout Procedure if the teams are still tied following conclusion of the overtime period
- 0 points for the team losing the game in regulation time
- 3 points will be deducted from any team that has forfeited a game

For group B – 3 teams the following variation will apply:

- 4.5 points for the winning team at the conclusion of regulation time
- 1.5 point for both teams at the conclusion of regulation time if the game is tied
- An additional 1.5 point earned for the team winning the game in a 5-minute overtime period, or the Penalty-Shot Shootout Procedure if the teams are still tied following conclusion of the overtime period
- 0 points for the team losing the game in regulation time
- 4.5 points will be deducted from any team that has forfeited a game

The teams that finished first in their respective groups following the PRELIMINARY ROUND will be the designated home teams for their Semi-final pairings.

The SEMI-FINAL ROUND will be played as follows:

- A1 v B2
- B1 v A2

The two winning teams will play in the Gold Medal game and the two losing teams will play in the Bronze Medal game.

The three teams that did not qualifying for the SEMI FINALS will play a CLASSIFICATION ROUND to determine places 5 to 7 in the final ranking.

Teams will be ranked in accordance with the IIHF standard points system (3-2-1) as described above. If two or more teams are tied on points the ranking will be determined based on the tie breaking regulations as described here.

5.5.4. TIE BREAKING SYSTEM (2017 IIHF SPORT REGULATIONS)

The tie-breaking system for two teams with the same number of points in a standing will be the game between the two teams, the winner of the game taking precedence.

Due to the fact that the three-point system does not allow a game to end in a tie, then the following tie breaking procedure is applicable when three or more teams are tied in points in a Championship standing.

Should three or more teams be tied on points, then a tie breaking formula will be applied as follows, creating a sub-group amongst the tied teams. This process will continue until only two or none of the teams remain tied. In the case of two remaining tied teams, the game between the two would then be the determining tie-breaker as the game could not end as a tie. In the case of none of the teams being tied, the criteria specified in the following respective step applies.

Step 1:

Taking into consideration the games between each of the tied teams, a sub-group is created applying the points awarded in the direct games amongst the tied teams from which the teams are then ranked accordingly.

Step 2:

Should three or more teams still remain tied in points then the better goal difference in the direct games amongst the tied teams will be decisive.

Step 3:

Should three or more teams still remain tied in points and goal difference then the highest number of goals scored by these teams in their direct games will be decisive

Step 4:

Should three or more teams still remain tied in points, goal difference and goals scored then the results between each of the three teams and the closest best-ranked team outside the sub- group will be applied. In this case the tied team with the best result (1. points, 2. goal difference, 3. more goals scored) against the closest best ranked-team will take precedence

Step 5:

Should the teams still remain tied, then the results between each of the three teams and the next highest best-ranked team outside the sub-group will be applied.

Step 6:

Should the teams still remain tied after these five steps have been exercised



then Sport considerations will be applied and the teams will be ranked by their positions coming into the Championship (i.e. seeding).

5.5.5. OVERTIME OPERATIONS (2017 IIHF SPORT REGULATIONS)

Overtime – Operations for Preliminary Round Games and Classification Round

If at the end of the three (3) regular twenty (20) minutes periods, the two playing teams are tied, the teams will then play a 'sudden death' overtime period of not more than five (5) minutes, immediately after an intermission of 90 seconds, with the team scoring first declared the winner. The overtime period shall be played with each team at a numerical strength of three (3) skaters and one (1) goaltender.

The overtime period will commence and the clock will be reset to 5:00 minutes and the overtime period will begin.

The players will remain at their respective player benches during the 90 second intermission.

Goaltenders must go to their respective players' benches during this rest period, however, penalized players must remain on the penalty bench. Should a penalized player exit the penalty bench, she shall be returned immediately by the game officials with no additional penalty being assessed, unless she commits an infraction of any other rule. Teams are not permitted to return to the dressing room during this time.

In the overtime period, the teams must change ends, defending the same end-zone as they did in the second period.

Penalties:

When regulation time ends and the teams are 5 on 3, teams will start the overtime period with 5 on 3. Once player strength reaches 5 on 4 or 5 on 5, at the next stoppage of play, player strength is adjusted to 4 on 3 or 3 on 3, as appropriate.

When regulation time ends and teams are 4 on 4 teams will start overtime 3 on 3.

If at the end of regulation time teams are 3 on 3, overtime starts 3 on 3. Once player strength reaches 4 on 4, 5 on 4 or 5 on 5, at the next stoppage player strength is adjusted to 3 on 3 or 4 on 3 as appropriate.

At no time will a team have less than three players on the ice. This may require a fourth and/or fifth skater to be added in the event penalties are assessed.

If a team is penalized in overtime, teams play 4 on 3. If both teams are penalized with minor penalties at the same stoppage of play (with no other penalties in effect), teams will continue to play 3 on 3.

In overtime, if a team is penalized such that a two-man advantage is called for, then the offending team will remain at three (3) skaters while the non-offending team will be permitted five (5) skaters.

At the first stoppage of play after the two-man advantage is no longer in effect, the numerical strength of the teams will revert back to 4 on 3 or 3 on 3, as appropriate.

Overtime – Operations for a Playoff Game or for a Bronze Medal Game:

If at the end of the three (3) regular twenty (20) minutes periods in a Playoff Game and or in a Bronze Medal Game and the two playing teams are tied, the teams will then play a 'sudden death' overtime period of not more than 10 minutes, immediately after an intermission of 90 seconds, with the team scoring first declared the winner. The overtime period shall be played with each team at a numerical strength of four (4) skaters and one (1) goaltender.

The overtime period will commence and the clock will be reset to 10:00 minutes and the overtime period will begin.

The players will remain at their respective player benches during the 90 second intermission.

Goaltenders must go to their respective players' benches during this rest period, however, penalized players must remain on the penalty bench. Should a penalized player exit the penalty bench, she shall be returned immediately by the game officials with no additional penalty being assessed, unless she commits an infraction of any other rule. Teams are not permitted to return to the dressing room during this time.

In the all overtime period, the teams must change ends, defending the same end-zone as they did in the second period.

Penalties:

When regulation time ends and the teams are 5 on 3, teams will start the overtime period with 5 on 3. Once player strength reaches 5 on 4 or 5 on 5, at the next stoppage of play, player strength is adjusted to 4 on 3 or 4 on 4, as appropriate.

When regulation time ends and teams are 4 on 4 teams will start overtime 3 on 3.



If at the end of regulation time teams are 3 on 3, overtime starts 3 on 3. Once player strength reaches 4 on 4, 5 on 4 or 5 on 5, at the next stoppage player strength is adjusted to 3 on 3, 4 on 3 or 4 on 4 as appropriate.

At no time will a team have less than three players on the ice. This may require a fourth and/or fifth skater to be added in the event penalties are assessed.

If a team is penalized in overtime, teams play 4 on 3. If both teams are penalized with minor penalties at the same stoppage of play (with no other penalties in effect), teams will continue to play 4 on 4.

In overtime, if a team is penalized such that a two-man advantage is called for, then the offending team will remain at three (3) skaters while the non-offending team will be permitted five (5) skaters.

At the first stoppage of play after the two-man advantage is no longer in effect, the numerical strength of the teams will revert back to 4 on 3 or 4 on 4, as appropriate.

Overtime – Operations for the Gold Medal Game:

If at the end of the three (3) regular twenty (20) minutes periods in a Gold Medal Game of a top category championship and the two playing teams are tied, the teams will then play a 'sudden death' overtime period of not more than 20 minutes with the team scoring first declared the winner. The overtime period shall be played with each team at a numerical strength of five (5) skaters and one (1) goaltender.

The overtime period will commence following an ice resurfacing during a 15 minute intermission where the teams will return to their dressing room before the start of the overtime period. The overtime period will start with the same on ice strength as the third period finished with all assessed penalties in force.

In the overtime period, the teams must change ends, defending the same end-zone as they did in the second period.

5.5.6. PENALTY-SHOT SHOOTOUT PROCEDURE (2017 IIHF SPORT REGULATIONS)

If following the completion of regulation time in any WU game and the score of the game is tied, the teams will then play an overtime period with a maximum duration and number of players as specified in the IIHF Sport Regulations with the team scoring first declared the winner.

If no goal is scored in the overtime period then the IIHF Penalty-Shot Shootout Procedure will apply.

The following procedure will be utilized:

1. Shots will be taken at both ends of the ice surface. The 14-meter wide longitudinal centre section of the rink, between the Face-Off Spots in the neutral and end zones, will be dry- scraped by the ice-resurfacing machine prior to the Penalty-Shot Shootout during the time required to organize the program accordingly.
2. The procedure will begin with three (3) different shooters from each team in the Preliminary Round and Classification Round or five (5) shooters in a playoff, Bronze Medal or Gold Medal Game, taking alternate shots. The players do not need to be named beforehand. Eligible to participate in the Penalty-Shot Shootout will be the four goalkeepers and all players from both teams listed on the official game sheet except as specified in article 3 below.
3. Any player whose penalty had not been completed when the overtime period ended is not eligible to be one of the players selected to take the shots and must remain in the penalty box or in the dressing room. Also players serving penalties imposed during the Penalty- Shot Shootout must remain in the penalty box or in the dressing room until the end of the procedure.
4. The Referee will call the two captains to the Referee Crease and flip a coin to determine which team takes the first shot. The winner of the coin toss will have the choice whether his team will shoot first or second.
5. The goalkeepers shall defend the same goal as in the overtime period and may remain at their goal creases while the opposing team is taking a shot.
6. The goalkeepers from each team may be changed after each shot.
7. The shots will be taken in accordance with Rule 63 of the IIHF Official Rule Book.
8. The players of both teams will take the shots alternately until a decisive goal is scored. The remaining shots will not be taken.
9. If the result is still tied after all shots by each team the procedure shall continue with a tie- break shoot-out by one player of each team, with the same or new players with the other team starting to take the tie-break shots. The same player can also be used for each shot by a team in the tie-break shoot-out. The game shall be finished as soon as a duel of two players brings the decisive result.
10. The Official Scorekeeper will record all shots taken, indicating the players, goalkeepers and goals scored.
11. Only the decisive goal will count in the result of the game. It shall be credited to the player who scored and to the goalkeeper concerned.
12. If a team declines to participate in the Penalty-Shot Shootout, the game will be declared as a loss for that team and the other team will be awarded 3 points for a win. If a player declines to take a shot it will be declared «no score» for his team.

5.6. COMPETITION AND TRAINING VENUE INFORMATION

OC Venue Manager	Mergen DYUISSALIYEV
------------------	---------------------

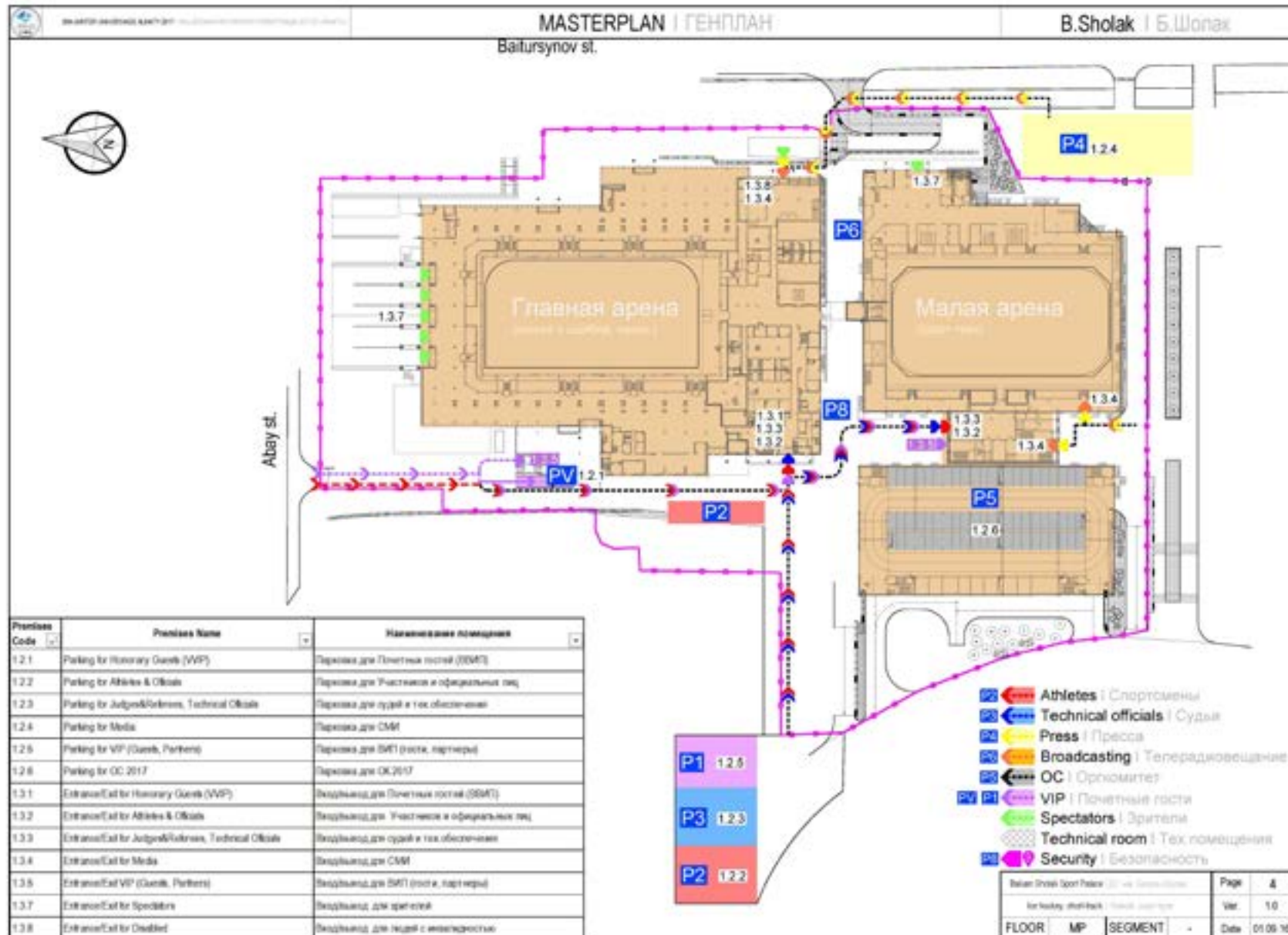
Venue	Function	Location	Distance to AV
«Baluan Sholak» Ice Hockey Arena	Training/ Competition	Almaty, Abay 44 43.240245, 76.92640	12.7 km/ 30min

«Baluan Sholak» Sport Palace includes 2 arenas: «Baluan Sholak» Short Track Arena and «Baluan Sholak» Ice Hockey Arena.

At the time of construction in 1967, the palace was comprised of an ice sheet, refrigeration plant room for making synthetic ice, medical room and curriculum office. In 2010, the palace was renovated in accordance with international standards to hold the 7th Winter Asian Games.

At the present time the palace holds competitions of continental and world level Olympic sports. In November 2015 the palace held The Pacific-Asia Curling Championships that served as qualifying competitions for the World Cup 2016. The ice rink is 60 metres x 30 metres. There are 6 team-changing rooms in the Ice Hockey Arena. Also, a additional 2 team changing rooms are located in the Short Track Arena.

General layout



5.7. ICE HOCKEY WOMEN COMPETITION SCHEDULE

Date	Day	Time	Event	Venue
Jan. 28	Sat	16:30 – 19:00	CAN - CHN (1)	«Baluan Sholak» Ice Hockey Arena
		20:00 – 22:30	KAZ – GBR (2)	
Jan. 29	Sun	12:30 – 15:00	USA - RUS (3)	
Jan.30	Mon	16:30 – 19:00	CAN - GBR (4)	
		20:00 – 22:30	CHN – KAZ (5)	
Jan. 31	Tue	20:00 – 22:30	JPN - USA (6)	
Feb. 1	Wed	16:30 – 19:00	GBR - CHN (7)	
		20:00 – 22:30	KAZ - CAN (8)	
Feb. 2	Thu	20:00 – 22:30	RUS - JPN (9)	
Feb. 3	Sat	20:00 – 22:30	RL D6 – D5 (10)	
Feb. 4	Sun	16:30 – 19:00	SF#1 (11)	
		20:00 – 22:30	SF#2 (12)	
Feb. 5	Mon	13:00 – 15:30	RL D7 – D6 (13)	
Feb. 6	Tue	13:00 – 15:30	RL D5 – D7 (14)	
		16:30 – 18:00	BRONZE (15)	
		20:00 – 22:30	GOLD (16)	

5.8. TRAINING SCHEDULE

5.8.1. UNOFFICIAL TRAININGS

Unofficial Trainings can be booked by filling in special forms. Reservation can be done till January 25th. The reservation forms are available on the OC webpage.



5.8.2. OFFICIAL TRAININGS

Date	Day	Time	Event	Venue
Jan. 28	Sat	07:30 – 08:15	Referee's Practice	«Baluan Sholak» Ice Hockey Arena
		08:30 – 09:00	1 st Practice CHN	
		09:15 – 09:45	2 nd Practice CAN	
		10:00 – 10:30	3 rd Practice GBR	
		10:45 – 11:15	4 th Practice KAZ	
		11:30 – 12:30	5 th Practice RUS	
		12:45 – 13:45	6 th Practice USA	
		14:00 – 15:00	7 th Practice JPN	
Jan. 29	Sun	7:30 – 08:15	7 th Practice CHN	
		8:30 – 9:15	6 th Practice JPN	
		9:30 – 10:15	3 rd Practice GBR	
		10:30 – 11:15	4 th Practice CAN	
		15:15 – 16:00	5 th Practice KAZ	
Jan. 30	Mon	07:30 – 08:15	Referee's Practice	
		08:30 – 09:00	1 st Practice GBR	
		09:15 – 09:45	2 nd Practice CAN	
		10:00 – 10:30	3 rd Practice KAZ	
		10:45 – 11:15	4 th Practice CHN	
		11:30 – 12:30	5 th Practice USA	
		12:45 – 13:45	6 th Practice JPN	
		14:00 – 15:00	7 th Practice RUS	
Jan. 31	Tue	08:00 – 08:45	Referee's Practice	
		09:00 – 09:30	1 st Practice USA	
		09:45 – 10:15	2 nd Practice JPN	
		10:30 – 11:30	3 rd Practice CHN	
		11:45 – 12:45	4 th Practice GBR	
		13:00 – 14:00	5 th Practice CAN	
		14:15 – 15:15	6 th Practice KAZ	
		15:30 – 16:30	7 th Practice RUS	

Feb. 1	Wed	08:30 – 09:00	1 st Practice CHN	«Baluan Sholak» Ice Hockey Arena
		09:15 – 09:45	2 nd Practice GBR	
		10:00 – 10:30	3 rd Practice CAN	
		10:45 – 11:15	4 th Practice KAZ	
		11:30 – 12:30	5 th Practice JPN	
		12:45 – 13:45	6 th Practice RUS	
		14:00 – 15:00	7 th Practice USA	
Feb. 2	Thu	08:00 – 08:45	Referee's Practice	
		09:00 – 09:30	1 st Practice JPN	
		09:45 – 10:15	2 nd Practice RUS	
		10:30 – 11:30	3 rd Practice USA	
		11:45 – 12:45	4 th Practice CHN	
		13:00 – 14:00	5 th Practice GBR	
		14:15 – 15:15	6 th Practice CAN	
		15:30 – 16:30	7 th Practice KAZ	
Feb. 3	Fri	09:00 – 09:45	Referee's Practice	
		10:00 – 11:30	1 st Practice	
		11:45 – 12:15	2 nd Practice	
		12:30 – 13:30	3 rd Practice	
		13:45 – 14:45	4 th Practice	
		15:00 – 16:00	5 th Practice	
		16:15 – 17:15	6 th Practice	
		17:30 – 18:30	7 th Practice	
Feb. 4	Sat	08:30 – 09:00	1 st Practice	
		09:15 – 09:45	2 nd Practice	
		10:00 – 10:30	3 rd Practice	
		10:45 – 11:15	4 th Practice	
		11:30 – 12:30	5 th Practice	
		12:45 – 13:45	6 th Practice	
		14:00 – 15:00	7 th Practice	



Feb. 5	Sun	07:00 – 07:45	Referee's Practice	«Baluan Sholak» Ice Hockey Arena
		08:00 – 09:00	3 rd Practice	
		09:15 – 10:15	4 th Practice	
		10:30 – 11:30	5 th Practice	
		16:15 – 17:15	6 th Practice	
		17:30 – 18:30	7 th Practice	
Feb. 6	Mon	08:45 – 09:15	Team Practice	
		09:30 – 10:00		
		10:15 – 10:45		
		11:00 – 11:30		

5.9. TECHNICAL MEETINGS

Date	Day	Time	Event	Venue
Jan. 27	Fri	16:30	1 st Technical Committee Meeting	Athletes' Village
		17:30	TRIM	
		19:30	Directorate #1 (GTM)	
Jan. 30	Mon	09:00	Directorate #2	«Baluan Sholak» Ice Hockey Arena
Feb. 3	Fri	09:00	Directorate #3	Athletes' Village
Feb. 5	Sun	16:00	Directorate #4	«Baluan Sholak» Ice Hockey Arena

5.10. ICE HOCKEY TEAM UNIFORMS

Ice Hockey Team Uniforms must follow the FISU Ice Hockey Uniform Guidelines which can be found in following website: www.almaty2017.com (Downloads)

5.11. DOPING CONTROL

5.11.1. DOPING CONTROL

Doping control will be carried out in accordance with the rules and regulations of FISU.

5.11.2. LIST OF PROHIBITED SUBSTANCES

The actual list of prohibited substances and treatment is defined in accordance with WADA international standards. NUSF will be responsible for ensuring that their delegations, namely athletes, are made aware of this prohibited list. Ignorance of the prohibited list will in no way constitute a valid excuse for

any participant of the WU violating valid anti-doping rules. For the WADA list of prohibited sub-stances, please refer to the following website: www.wada-ama.org.

5.11.3. TESTING

In accordance with the preliminary Test Distribution Plan elaborated by the FISU International Medical Committee (FISU CMI), the required number of urine and blood tests will be collected both during and out of competition. Athletes may be tested at any time during the period of their accreditation. Urine and blood tests in and outside competition will be performed by the doping control officers licensed by Kazakhstan National Anti-Doping Centre under the supervision of the FISU CMI.

All test results will be sent to the confidential email address of Chairman of the FISU International Medical Committee (FISU CMI) as well put into ADAMS. The FISU CMI will bear the responsibility for the result management in the case of a violation of the Anti-doping rules.

5.11.4. DOPING CONTROL STATIONS

Athletes must have their accreditation badges with them at all times in the Doping Control Stations.

Doping Control Station for Ice Hockey Women athletes will be allocated at the «Baluan Sholak» Sport Palace: Ice Hockey Arena 1st floor (please refer to Appendix 7.2).

5.11.5. THERAPEUTIC USE EXEMPTION (TUE)

Athletes taking part in the WU requiring a Therapeutic Use Exemption must apply to the appropriate Anti-doping Organisation as soon as possible. International Standards for Therapeutic Use Exemption will be applied. Should prohibited substances or methods be used after the opening of the WU, applications for emergency TUE should be made to the TUE Committee of FISU.

5.11.6. EMERGENCY TREATMENT

In the case of an emergency, if an athlete has to use prohibited substances or methods during the WU, team doctors will be responsible for completing the TUE form and without any delay submit it to the FISU CMI.

5.11.7. CONTACT DETAILS

Should any further information be required, please contact:

Dr. Raushan Akhanova, Head of the Department of Medical Services and Doping Control: r.akhanova@almaty2017.kz



5.12. AWARDS & MEDALS

5.12.1. MEDAL-AWARDING CEREMONY

The Medal-Awarding Ceremonies will take place accordingly to the following schedule:

Date	Day	Time	Medal-Awarding Ceremony	Venue
Feb. 6	Mon	After gold medal game	Women's tournament	Baluan Sholak Arena

The OC will inform the Head of delegation, the team officials and the athletes about the time, location and procedure. In case of a no show of a medallist, the medals and mascots maybe delivered to an official of the relevant delegation. The official must wear the uniform of the delegation to take part in the ceremony. S/he must not mount the podium but walk in front of it and take the medal and mascot in his/her hands. All flags will be raised.

During the Medal-Awarding Ceremony:

- The athletes are not allowed to bring national flags or any other items on the podium and are expected to take their caps off.
- The athletes must wear their delegation's approved uniform or the uniform with which they competed if the ceremony takes place right after the end of the competition and at the same venue.
- During the playing of the FISU anthem and the raising of the flags, they shall face the flags and conduct themselves in a dignified manner all the times. No national anthem is played during the ceremony.
- The detailed rules of this procedure will be in accordance with the rules of FISU.

5.12.2. DIPLOMA OF HONOURS

- The athletes ranked one (1) to eight (8) will receive a Diploma of Honours.
- For team events, each team member will receive a personal diploma of honour mentioning his/her name and the team ranking.
- Diplomas of participation and of honour are not distributed to winners at the Medal-Awarding ceremony. They are handed to the Head of Delegation or an appointed representative of each delegation in the Athletes' Village at a later time.

5.13. PRESS INTERVIEWS

Sub-press Centres are set up in the main/finals competition venues to facilitate interviews and reports by the accredited media. After the competitions, all athletes must exit the Field of Play through the Mixed Zone, and brief interviews are conducted in the Mixed Zone. Coaches and winning athletes/teams take

part in press conferences after the Awarding Ceremonies on request of the press manager. During the press conference, interpretation will be provided in the official language (English) and RUS/KAZ languages. If one does not speak the official language, such person should bring his/her own interpreter of the language to the press conferences.

5.14. SPORT INFORMATION SERVICES

5.14.1. ON-LINE SPORTS INFORMATION SERVICE

Internet address:	www.almaty2017.com
-------------------	--

5.14.2. SPORT INFORMATION AT THE VENUE

The SID will be located at each venue, will distribute most recent information related to the competitions to the SID and receive requests from the team representative(s).

5.14.3. SPORTS INFORMATION AT ATHLETES VILLAGE (AV)

Sports information desks for all 12 sports will be located in the SIC at the AV, the SIC will receive the most updated sports information. Any official and/or urgent notice from each competition headquarter will be announced immediately.

5.14.4. OPERATION INFORMATION

Function	Location	Operating Period	Operating Hours
On-line Service	Website		
AV SIC	1 st Floor of Pyramid zone	24 Jan – 10 Feb 2017	07:00 – 23:00
Competition Venue SID	«Baluhan Sholak» Ice Hockey Arena	27 Jan – 8 Feb 2017	Accordingly training and competition schedule



5.14.5. LIST OF SPORT INFORMATION BY LOCATION

Contents	Online	Venue SID	AV SIC	ITO Hotel
Competition Schedule	X	X	X	X
Training Schedule and booking info		X	X	X
Start lists	X	X	X	X
Change to Schedules	X	X	X	X
Competition Results	X	X	X	X
Games Video Recording (IH)		X	X	X
Special announcements and urgent notice		X	X	X
Medal Table	X			
Technical Handbooks	X		X	X
Regulations for the WU2017	X			
Daily Sport Bulletin	X			
Non sport information (transport, weather services etc.)		X	X (MIC)	X
Answer and follow up to teams questions		X	X	X

6. SERVICE INFORMATION

6.1. TEAM SERVICES

6.1.1. TEAM HOSTS – ATTACHES

An additional attaché with relevant knowledge or skills of the certain sport will be allocated to each team sports. Team sport attaches will be introduced at the Athletes' Village with Delegations attache, right after arrival of delegation to AV.

6.1.2. TEAM SERVICE STANDARD

All teams will be provided with laundry services as well as towels, water and drinks. Moreover, after every game teams will be able to get 4 DVD/USB discs.

6.2. ACCREDITATION

Location of the Main Accreditation Centre: Almaty, Alatau district, Momysheva avenue, Northern Ryskulova street. At the AV (Refer to Athletes' Village Map).

Important: No athlete will be allowed to attend official training or competition without the Accreditation Card. Temporary cards do not allow athletes to take part to official trainings and competitions.

6.3. TRANSPORTATION

6.3.1. GENERAL TRANSPORTATION SYSTEM

The OC guarantees the transportation of every one that is accredited. The Transportation Committee has established the necessary organization to plan the transportation needs of WU from the day of the opening of the AV (24 January). The buses will be dedicated for each team.

6.3.2. COMPETITION & TRAINING TRANSPORTATION

Needs no fixed schedule. There will be allocated separate vehicle for a team to transport in accordance with official program (trainings, competitions).

Route TA 15 "Athletic Village-Baluan Sholak Sports Palace-Athletes' Village"
Distance between the Athletes' Village and the Baluan Sholak Sports Palace – 12.7 km

Travel time between the Athletes' Village and the Baluan Sholak Sports Palace – 30 min

Transport type – tourist bus

6.3.3. TRANSPORTATION FOR MEDAL-AWARDING CEREMONIES

Awarding Ceremonies will be held every day at 20.00. Thus, the Transportation Department prepared a specific transportation plan for transferring athletes to the Medal Plaza. All winners will be transported to the Medal plaza by special reserved minibuses.

- TA 16 "Athletes Village – Medal Plaza – Athletes' Village"



- Travel time between the Athletes' Village and the Medal Plaza – 36 min.
- Transport type – minibuses.

For the transportation schedule for the medal awarding ceremonies please refer to the transportation manual.

6.4. MEDICAL SERVICES

6.4.1. GENERAL OVERVIEW

The OC provides accredited persons with free and adequate medical care. This medical care includes all appropriate emergency care, diagnosis and treatment of all injuries and illnesses directly and indirectly related to the WU, and this obligation will begin from the day of the opening of the AV until two (2) days following the closing ceremony. This will not cover medical care while in country if the credential person has already officially left the AV or officially left the host country.

All WU participants must have own medical insurance. Only emergency medical care for WU accredited participants will be covered by the OC.

- The working hours of the Medical Center at the AV will be daily available starting from 6:00 am till 24:00 pm.
- The Pharmacy at the AV will be round-the-clock.

7. OC CONTACTS

Sport Competitions Department

sports@almaty2017.kz





8. APPENDICES

8.1. 28TH WINTER UNIVERSIADE 2017 COMPETITION SCHEDULE - VERSION 06.01.2017



ALMATY 2017 WINTER UNIVERSIADE - COMPETITION SCHEDULE

29 JANUARY - 8 FEBRUARY 2017



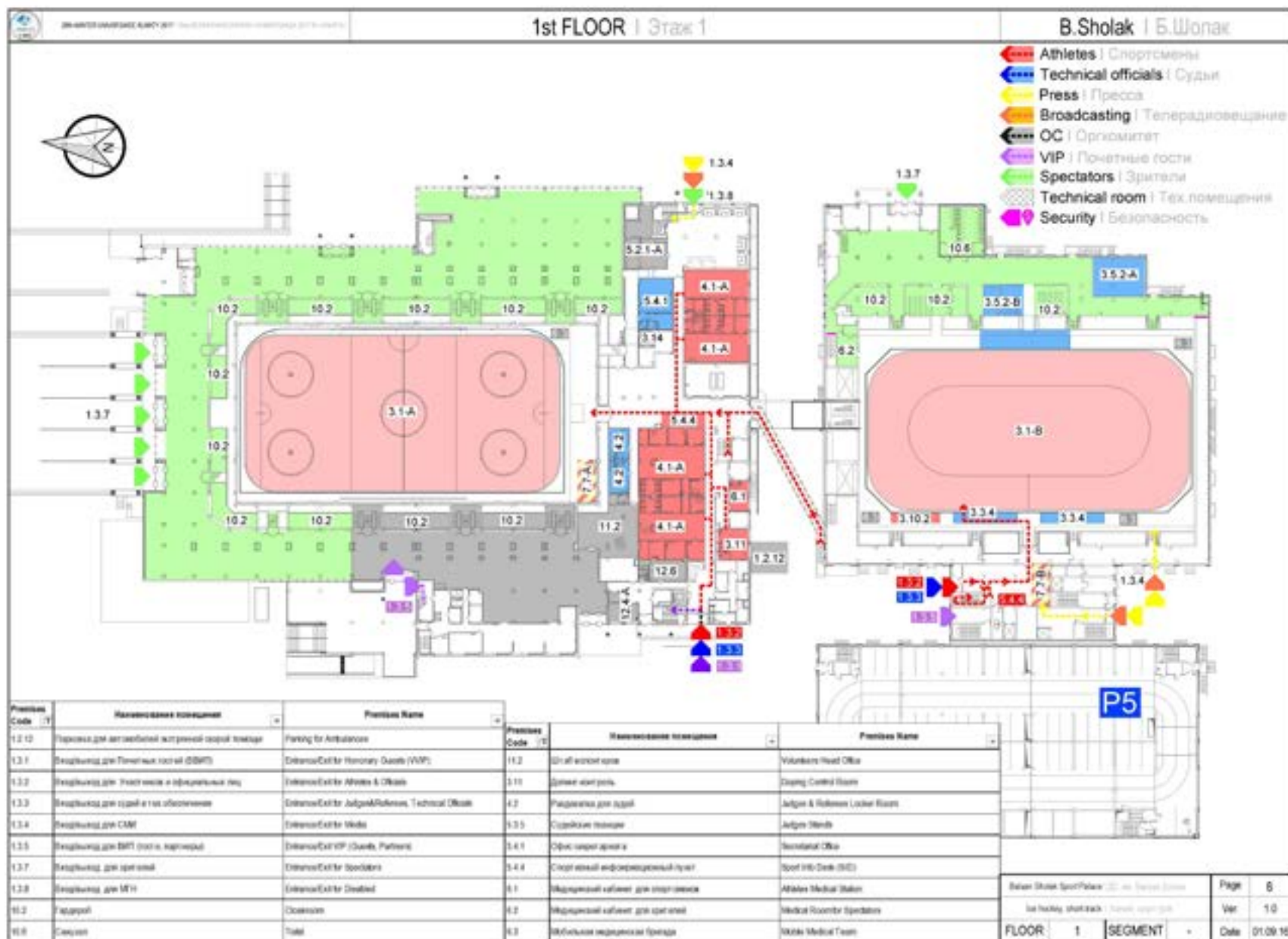
	SATURDAY January - 28	SUNDAY January - 29	MONDAY January - 30	TUESDAY January - 31	WEDNESDAY February - 1	THURSDAY February - 2	FRIDAY February - 3	SATURDAY February - 4	SUNDAY February - 5	MONDAY February - 6	TUESDAY February - 7	WEDNESDAY February - 8	Medal Awardings	
CEREMONIES	«Almaty Arena»: Figure Skating Arena	19:00 Opening Ceremony										19:00 Closing Ceremony		
FIGURE SKATING	«Almaty Arena»: Figure Skating		Unofficial Practice	Official Practice	Ladies 14:30 Short Program	Ice Dance 14:30 Short Dance Ladies 17:00 Free Skating	Men 14:50 Short Programme	Ice Dance 14:00 Free Dance Men 17:00 Free Skating	Exhibition 17:00 EXH					
CURLING	«Almaty Arena»: Curling	Official Practice M/W	09:00 w1 14:00 M1 19:00 w2	09:00 M2 14:00 w3 19:00 M3	09:00 w4 14:00 M4 19:00 w5	09:00 M5 14:00 w6 19:00 M6	09:00 w7 14:00 M7 19:00 w8	09:00 M8 14:00 w9 19:00 M9	09:00/14:00/19:00 Tie Breaker games if required	09:00 Semi Finals M/W 14:00 Bronze Medal Game M/W	09:00 W Gold Medal Game 14:00 M Gold Medal Game			
ICE HOCKEY Men	«Hayk» Arena» 12:30 SVK - GBR (1) 16:00 JPN-LAT (2) 19:30 KAZ-CHN (3)		12:30 KOR - RUS (4) 16:00 SWE - CZE (5) 19:30 USA - CAN (6)	12:30 JPN - KOR (7) 16:00 SVK - USA (8) 19:30 KAZ - SWE (9)	12:30 RUS - LAT (10) 16:00 CAN - GBR (11) 19:30 CZE - CHN (12)	12:30 GBR - USA (13) 16:00 LAT - KOR (14) 19:30 CHN - SWE (15)	12:30 CAN - SVK (16) 16:00 RUS - JPN (17) 19:30 CZE - KAZ (18)	12:30 D9 - D12 (19) 16:00 QP#1 (20) 19:30 QP#2 (21)	12:30 D10 - D11 (22) 16:00 QP#3 (23) 19:30 QP#2 - QP#3 (24)	09:00 L#19 - L#22 (25) 12:30 W#19 - W#22 (26) 16:00 LQF#1 - LQF#4 (27) 19:30 LQF#2 - LQF#3 (28)	09:00 L#27 - L#28 (29) 12:30 W#27 - W#28 (30) 16:00 SF#1 (31) 19:30 SF#2 (32)	11:00 BRONZE (33) 15:00 GOLD (34)		
ICE HOCKEY Women	«Baltan Sholaks»: Ice Hockey Arena 16:30 CAN-CHN (1) 20:00 KAZ-GBR (2)	12:30 USA-RUS (3)	16:30 CAN - GBR (4) 20:00 CHN - KAZ (5)	20:00 JPN - USA (6)	16:30 GBR - CHN (7) 20:00 KAZ - CAN (8)	20:00 RUS - JPN (9)	20:00 RL D6 - D5 (10)	20:00 RL D6 - D5 (10)	13:00 RL D7 - D6 (13)	13:00 RL D5-D7 (14) 16:30 BRONZE (15) 20:00 GOLD (16)				
SHORT TRACK	«Baltan Sholaks»: Short Track Arena						Unofficial Training 09:00-20:00	Official Training 09:00-20:00	14:00 1500m W/M 17:50 Heats 3000m Relay W Heats 5000m Relay M	14:00 500m W/M 17:50 SF 3000m Relay W SF 5000m Relay M	14:00 1000m W/M 18:00 F 3000m Relay W F 5000m Relay M			
SPEED SKATING	«Medeu» High-Mountain Ice Rink	Unofficial Training 09:00 - 13:00 14:30 - 17:30	Official Training 09:00 - 13:00	Official Training 09:00 - 13:00 14:30 - 17:30	09:00-10:45 Official Training 11:00 1'500m W 13:00 1'500m M	09:00-10:45 Official Training 11:00 3'000m W 13:00 3'000m M	09:00-10:45 Official Training 11:00 500m W 13:00 1'000m M	09:00-10:45 Official Training 11:00 5'000m W 13:00 1'000m M	09:00-10:45 Official Training 11:00 Team Pursuit W 13:00 Team Pursuit M	09:00-10:45 Official Training 11:00 Mass Start W 13:00 Mass Start M				
ALPINE SKIING	«Shymbulaka» Ski Resort	10:00-12:00 Official Free Skiing on Super-G course	Super-G W/M 10:30 Super-G W 13:00 Super-G M	Alpine Combined W 10:00 AC - SG 13:30 AC - SL	Alpine Combined M 10:00 AC - SG 13:30 AC - SL	Reserve Day	Giant Slalom W 10:00 1 st run 13:00 2 nd run	Giant Slalom M 10:00 1 st run 13:00 2 nd run	Parallel Nations Team Event 10:00	Slalom W 10:00 1 st run 13:00 2 nd run	Slalom M 10:00 1 st run 13:30 2 nd run	Reserve day		
FREESTYLE SKIING	«Shymbulaka» Ski Resort «Tabagana» Ski Resort	«Tabagana» Ski Resort Aerials M/W 10:00 - 13:00 Official Training	«Tabagana» Ski Resort Aerials W/M 10:00 - 11:15 Training 11:30 Qualification 13:00-13:45 Training 14:00 Finals	«Tabagana» Ski Resort Mixed Teams Aerials 10:00 - 11:15 Training 11:30 Qualification 13:00-13:45 Training 14:00 Finals	«Shymbulaka» Ski Resort Moguls W/M 09:00 - 12:00 Training	«Shymbulaka» Ski Resort Moguls W/M 09:00 - 10:00 Training 10:30 Qualification 13:00 Finals	«Shymbulaka» Ski Resort Dual Moguls W/M 09:00 - 10:00 Training 10:30 Qualification 14:00 Finals	Reserve Day	«Shymbulaka» Ski Resort Ski Cross W/M 11:00 - 14:00 Training	«Shymbulaka» Ski Resort Ski Cross W/M 09:00 - 10:00 Training 11:00 Qualification	«Shymbulaka» Ski Resort Ski Cross W/M 12:00 - 13:30 Training 14:00 Finals	Reserve Day		
SNOWBOARD	«Shymbulaka» Ski Resort «Tabagana» Ski Resort	«Shymbulaka» Ski Resort Parallel Giant Slalom W/M Parallel Slalom W/M Unofficial Training	«Shymbulaka» Ski Resort Parallel Giant Slalom W/M 09:00 Qualification 14:00 Finals	«Shymbulaka» Ski Resort Parallel Slalom W/M 09:00 Qualification 14:00 Finals Snowboard Cross W/M 10:00-13:00 Training	«Shymbulaka» Ski Resort Snowboard Cross W/M 08:45 - 09:45 Training 10:00 Qualification	«Shymbulaka» Ski Resort Snowboard Cross W/M 12:45 - 13:45 Training 14:00 Finals	Reserve Day	«Shymbulaka» Ski Resort Slopestyle W/M 10:00-13:00 Training	«Shymbulaka» Ski Resort Slopestyle W/M 09:00-09:45 Training 10:00 Qualification 13:00 Finals	«Tabagana» Ski Resort Big Air W/M 10:00-13:00 Training	«Tabagana» Ski Resort Big Air W/M 10:00-10:45 Training 11:00 Qualification 13:00-13:45 Training 14:00 Finals	Reserve Day		
BIATHLON	«Alatau» Cross – Country Skiing & Biathlon Complex	Unofficial Training 10:30 - 12:00 W 12:15 - 13:45 M	Official Training 11:00 - 13:00 W 13:15 - 15:15 M	Individual M/W 10:15 - 11:05 Zeroing W 11:15 - 12:55 Individual 15km W 13:15 - 14:05 Zeroing M 14:15 - 16:00 Individual 20km M	Official Training Sprint 11:00 - 13:00 W 13:15 - 15:15 M	Sprint M/W 09:30 - 10:20 Zeroing W 10:30 - 12:00 Sprint 7.5km W 12:15 - 13:05 Zeroing M 13:15 - 14:45 Sprint 10km M	Pursuit M/W 11:00-11:45 Zeroing W 12:00-12:50 Pursuit 10km W 13:00-13:45 Zeroing M 14:00-14:50 Pursuit 12.5km M	Official Training Mixed Relay 11:00-13:00 Unofficial Training 13:15-14:15	Mixed Relay 2x6km W + 2x7.5km M 11:00-11:45 Zeroing 12:00-13:30 Mixed Relay	Official Training Mass Start 11:00 - 13:00 W 13:15 - 15:15 M	Mass Start M/W 11:15 - 11:45 Zeroing W 12:00 - 12:45 Mass Start 12.5km W 14:15 - 14:45 Zeroing M 15:00 - 15:45 Mass Start 15km M	Reserve day		
CROSS-COUNTRY SKIING	«Alatau» Cross – Country Skiing & Biathlon Complex	Unofficial Training W/M 09:00 - 16:00	Individual (C) 11:00 - 14:00 Official Training W/M	Individual (C) 09:00-10:55 Official Training W 11:00-11:45 5km (C) W 11:45-12:25 Official Training M 12:30-13:45 10km (C) M Pursuit (F) 15:00-16:30 Official Training M/W	Pursuit (F) 08:30-12:25 Official Training W 10:30 - 11:15 5km (F) W 11:15-12:55 Official Training M 13:00-14:15 10km (F) M	Sprint (C) 11:00-16:00 Official Training W/M	Sprint (C) 10:30 - 12:25 Official Training 12:30 - 13:30 Qualification W/M 13:30 - 14:20 Official Training 14:45 - 16:20 Finals W/M	Mixed Team Sprint (F) 11:00 - 14:00 Official Training M/W	Mixed Team Sprint (F) 09:00-10:55 Official Training 11:00-12:00 Qualifications 12:05-12:55 Official Training 13:00-13:30 Final	Relay W/M 11:00-14:00 Official Training	Relay W/M 09:00-10:55 Official Training W 11:00-12:00 3x5km (C+FF) W 12:00-13:25 Official Training M 13:30-15:00 4x7.5km (CC+FF) M Mass Start (C) 16:00-17:00 Official Training W	Mass Start (C) 11:30-13:25 Official Training W 13:30-15:00 15km (C) W Official Training M	Mass Start (C) 08:00-09:55 Official Training M 10:00-12:00 30km (C) M	1 10 11
NORDIC COMBINED	«Sunkam» Ski Resort «Alatau» Cross-Country Skiing & Biathlon Complex	09:00-10:30 Unofficial Training Cross-Country 10km 14:00-15:00 Official Training Ski Jumping K95	Official Training Individual Gundersen 10:00-11:30 Ski Jumping K95 15:00-17:00 Cross-Country 10 km	Individual Gundersen 10:00 Trial Round K95 11:00 Ski Jumping K95 15:30 Cross-Country 10km	Reserve Day	Official Training Mass Start 09:00 - 10:30 Cross-Country 10 km 14:00-15:30 Ski Jumping K95	Mass Start 10:00 Cross-Country 10km 14:30 Trial Ski Jumping K95 15:30 Ski Jumping K95	Official Training Team Gundersen 10:00 - 11:00 Ski Jumping K95 15:00-16:30 Cross-Country 3x5km	Team Gundersen 09:30 Trial Ski Jumping K95 10:30 Ski Jumping K95 15:00 Cross-Country 3x5km	Reserve Day				
SKI JUMPING	«Sunkam» Ski Resort		Official Training 17:00-18:00 K95 Women 18:30-20:00 K95 Men	Official Training 17:00-18:00 K95 Women 18:30-20:00 K95 Men	K95 Individual M/W 16:00 Trial Women 17:00 Individual Women 18:30 Trial Men 19:30 Individual Men	Reserve Day	Official Training Team Competition/ Mixed Relay 17:00 - 18:00 K95 Women 18:00 - 19:30 K95 Men	K95 Mixed Relay 17:00 Trial Mixed Relay 18:00 K95 Mixed Relay	K95 Team M/W 16:00 Trial Team Women 16:30 Team Women 18:00 Trial Team Men 19:00 Team Men	Reserve Day				
At the venue	0	0	0	0	2	1	0	3	4	3	6	2	21	
At the Medal Plaza	0	0	8	11	3	10	8	4	7	5	8	0	64	
In total	0	0	8	11	5	11	8	7	11	8	14	2	85	

8.2. VENUE LAYOUTS

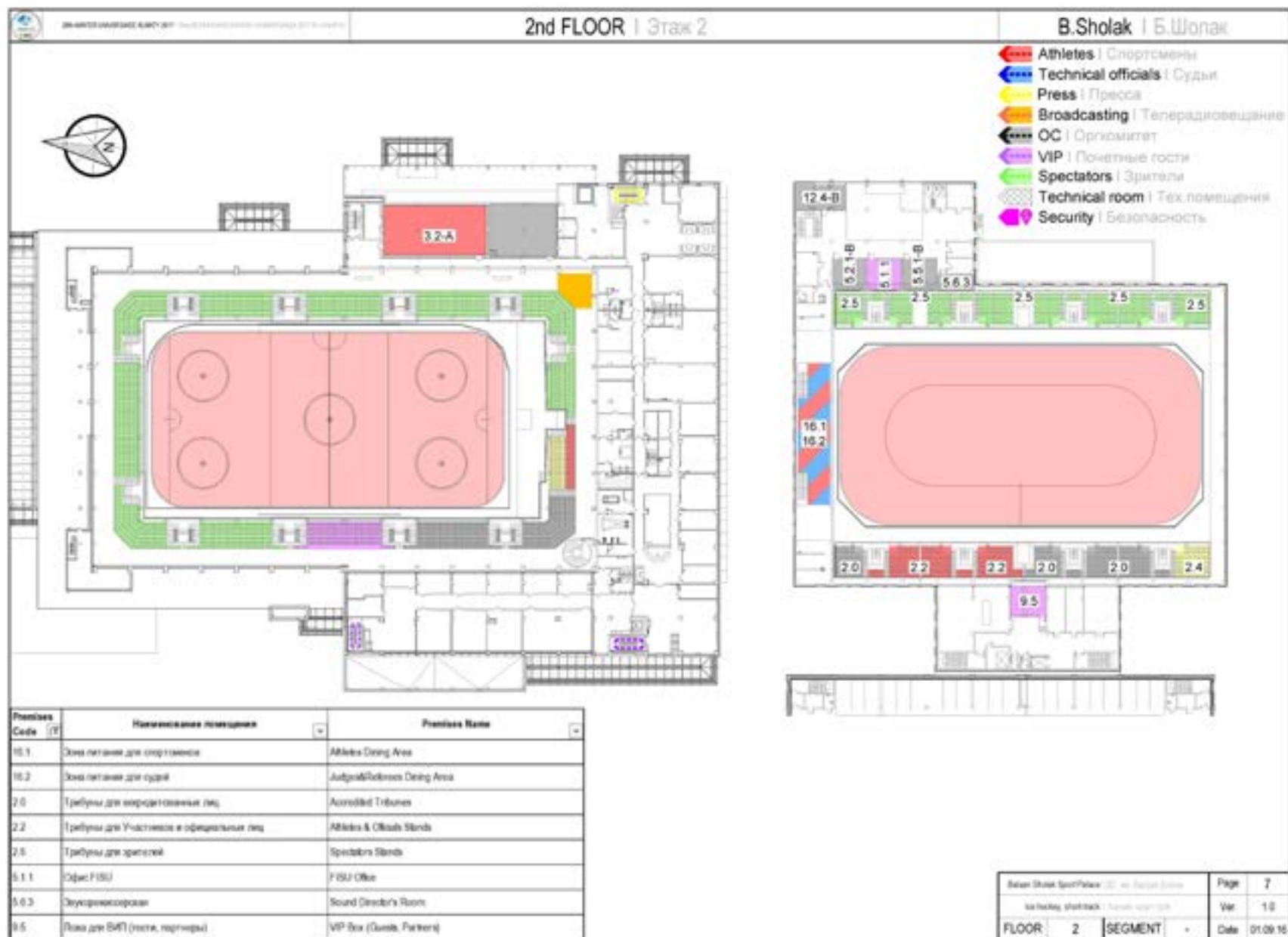
8.2.1. BASEMENT FLOOR



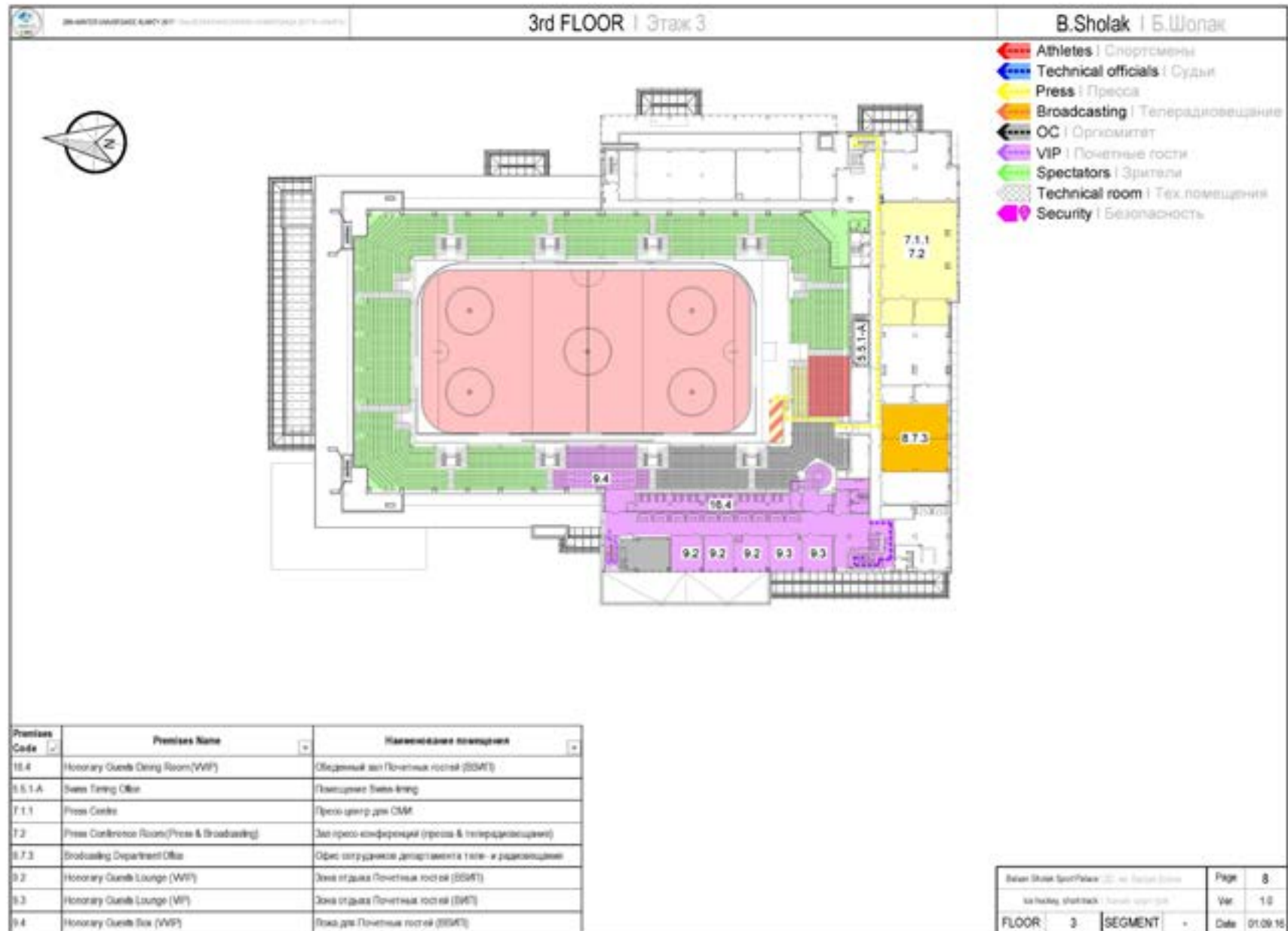
8.2.2. 1ST FLOOR



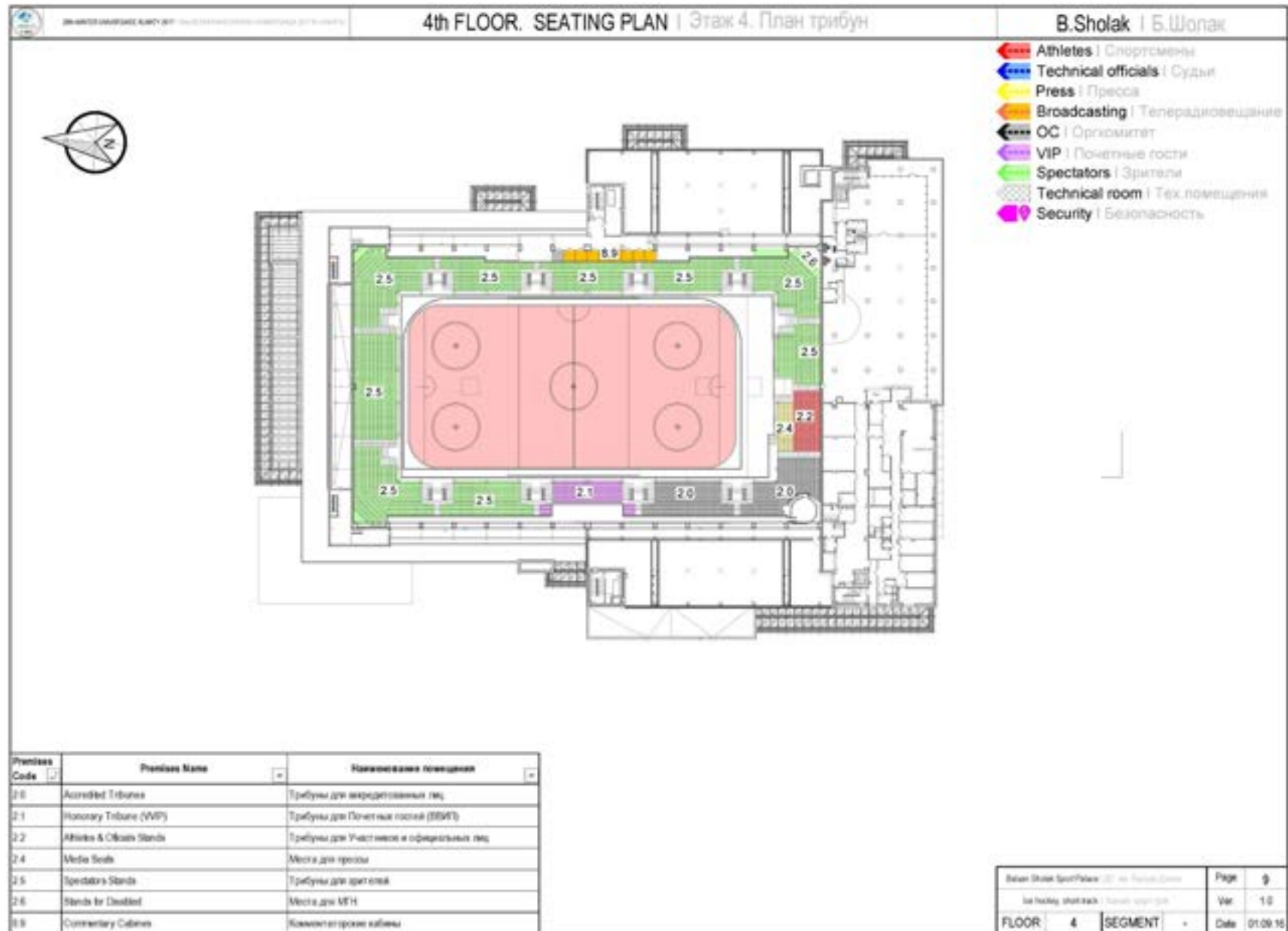
8.2.3. 2ND FLOOR



8.2.4. 3RD FLOOR



8.2.5. 4TH FLOOR



8.3. DAY BY DAY SCHEDULE

Training
Competition
Ceremony
Technical Meeting

Date	Day	Start Time	Finish Time	Event Name	Venue
27.01.2017	FRI	16:30		1st Technical Committee Meeting	Athletes Village
		17:30		Team Rules Information Meeting (TRIM)	
		19:30		Directorate #1 (GTM)	
28.01.2017	SAT	7:30	8:15	Referee's practice	Baluan Sholak Ice Hockey Arena
		8:30	9:00	1st game away team 1st practice	
		9:15	9:45	1st game home team 2nd practice	
		10:00	10:30	2nd game away team 3rd practice	
		10:45	11:15	2nd game home team 4th practice	
		11:30	12:30	Next day away team 1st game 5th practice	
		12:45	13:45	Next day home team 1st game 6th practice	
		14:00	15:00	Day-off team 7th practice	
		16:30		CAN VS CHN(1)	Baluan Sholak Ice Hockey Arena
		20:00		KAZ VS GBR (2)	
29.01.2017	SUN	7:30	8:15	Next day 1st game away team 3rd practice	Baluan Sholak Ice Hockey
		8:30	9:15	Next day 1st game home team 4th practice	
		9:30	10:15	Next day 2nd game away team 5th practice	



29.01.2017	SUN	10:30	11:15	Next day 2nd game home team 6th practice	Baluan Sholak Ice Hockey Arena
		12:30	15:00	USA vs RUS (3)	Baluan Sholak Ice Hockey Arena
		15:15	16:00	Day-off team 7th practice	Baluan Sholak Ice Hockey Arena
30.01.2017	MON	7:30	8:15	Referee's practice	Baluan Sholak Ice Hockey Arena
		8:30	9:00	1st game away team 1st practice	Baluan Sholak Ice Hockey Arena
		9:00		Directorate #2	Baluan Sholak Ice Hockey Arena
		9:15	9:45	1st game home team 2nd practice	Baluan Sholak Ice Hockey Arena
		10:00	10:30	2nd game away team 3rd practice	
		10:45	11:15	2nd game home team 4th practice	
		11:30	12:30	Next day away team 1st game 5th practice	
		12:45	13:45	Next day home team 1st game 6th practice	
		14:00	15:00	Day-off team 7th practice	
		16:30		CAN VS GBR (4)	Baluan Sholak Ice Hockey Arena
		20:00		CHN VS KAZ (5)	Baluan Sholak Ice Hockey Arena
31.01.2017	TUE	8:00	8:45	Referee's practice	Baluan Sholak Ice Hockey Arena
		9:00	9:30	1st game away team 1st practice	
		9:45	10:15	1st game home team 2nd practice	

31.01.2017	TUE	10:30	11:30	Next day away team 1st game 3rd practice	Baluan Sholak Ice Hockey Arena
		11:45	12:45	Next day home team 1st game 4th practice	
		13:00	14:00	Next day away team 2nd game 5th practice	
		14:15	15:15	Next day home team 2nd game 6th practice	
		15:30	16:30	Day-off team 7th practice	
		20:00	22:30	JPN VS USA (6)	Baluan Sholak Ice Hockey Arena
01.02.2017	WED	8:30	9:00	1st game away team 1st practice	Baluan Sholak Ice Hockey Arena
		9:15	9:45	1st game home team 2nd practice	
		10:00	10:30	2nd game away team 3rd practice	
		10:45	11:15	2nd game home team 4th practice	
		11:30	12:30	Next day away team 1st game 5th practice	
		12:45	13:45	Next day home team 1st game 6th practice	
		14:00	15:00	Day-off team 7th practice	
		16:30	18:00	GBR VS CHN (7)	Baluan Sholak Ice Hockey Arena
		20:00	22:30	KAZ VS CAN (8)	
02.02.2017	THU	8:00	8:45	Referee's practice	Baluan Sholak Ice Hockey Arena
		9:00	9:30	1st game away team 1st practice	
		9:45	10:15	1st game home team 2nd practice	
		10:30	11:30	B-group day-off team 3rd practice	
		11:45	12:45	A-group team day-off 4th practice	
		13:00	14:00	A-group team day-off 5th practice	



02.02.2017	THU	14:15	15:15	A-group team day-off 6th practice	Baluan Sholak Ice Hockey Arena
		15:30	16:30	A-group team day-off 7th practice	
		20:00	22:30	RUS VS JPN (9)	Baluan Sholak Ice Hockey Arena
03.02.2017	FRI	9:00		Directorate #3	Baluan Sholak Ice Hockey Arena
		9:00	9:45	Referee's practice	Baluan Sholak Ice Hockey Arena
		10:00	10:30	1st relegation game away team 1st practice	
		10:45	11:15	1st relegation game home team 2nd practice	
		11:30	12:30	1st semi-final away team 3rd practice	
		12:45	13:45	1st semi-final home team 4th practice	
		14:00	15:00	2nd semi-final away team 5th practice	
		15:15	16:15	2nd semi-final home team 6th practice	
		16:30	17:30	Relegation game dayoff team 7th practice	
		20:00	22:30	REL D6 VS D5 (10)	Baluan Sholak Ice Hockey Arena
04.02.2017	SAT	8:30	9:00	1st semi-final game away team 1st practice	Baluan Sholak Ice Hockey Arena
		9:15	9:45	1st semi-final game home team 2nd practice	
		10:00	10:30	2nd semi-final game away team 3rd practice	
		10:45	11:15	2nd semi-final game home team 4th practice	

04.02.2017	SAT	11:30	12:30	2nd relegation game away team 5th practice	Baluan Sholak Ice Hockey Arena
		12:45	13:45	2nd relegation game home team 6th practice	
		14:00	15:00	Relegation game dayoff team 7th practice	
		16:30	18:00	SF#1 (11)	Baluan Sholak Ice Hockey Arena
		20:00	22:30	SF#2 (12)	Baluan Sholak Ice Hockey Arena
05.02.2017	SUN	7:00	7:45	Referee's practice	Baluan Sholak Ice Hockey Arena
		8:00	9:00	Relegation game dayoff team 3rd practice	
		9:15	10:15	Bronze game away team 4th practice	
		10:30	11:30	Bronze game home team 5th practice	
		13:00	15:30	REL - D7 VS D6 (13)	Baluan Sholak Ice Hockey Arena
		16:00		Directorate #4	Baluan Sholak Ice Hockey Arena
		16:15	17:15	Gold game away team 6th practice	Baluan Sholak Ice Hockey Arena
		17:30	18:30	Gold game home team 7th practice	
06.02.2017	MON	8:45	9:15	Bronze game away team 3rd practice	Baluan Sholak Ice Hockey Arena
		9:30	10:00	Bronze game home team 4th practice	
		10:15	10:45	Gold game away team 5th practice	
		11:00	11:30	Gold game home team 6th practice	



06.02.2017	MON	13:00	15:30	REL D5 VS D7 (14)	Baluan Sholak Ice Hockey Arena
		16:30	18:00	BRONZE (15)	Baluan Sholak Ice Hockey Arena
		20:00	22:30	GOLD (16)	Baluan Sholak Ice Hockey Arena
		After gold game		Medal-Awarding Ceremony	Baluan Sholak Ice Hockey Arena

8.4. ATHLETES' VILLAGE MAP



- | | | | | |
|-------|---|--|--------------------------------------|---|
| 1-10 | Accommodations for Athletes and Officials | 24 | 1 st Floor | Waiting Cabins and ski storage rooms |
| 11 | 1 st Floor | Accreditation center/MIC/SIC/Bank/Finance | 1 st Floor | Souvenir store/Kakhat/Technodrom |
| | 2 nd Floor | Living hall for Athletes and Officials | 2 nd Floor | Internet cafe |
| | 3 rd Floor | Museum | 25 | 1 st Floor |
| 12 | 2 nd Floor | RSB office | Waiting Cabins and ski storage rooms | |
| 13-14 | Accommodations for volunteers | 26 | 1 st Floor | Flowers boutique/telephone connection/ |
| 16 | Police Office | | 2 nd Floor | Room for volunteers/lost and found room |
| 17 | 1 st Floor | Rifle storage/Lady shooting room | Meeting room | |
| | 1 st Floor | Entertainment Center | 28 | Mayor's office |
| | 2 nd Floor | Meeting rooms | 27 | Drop-off point |
| 18 | 1 st Floor | Waiting Cabins and ski storage rooms | 28 | Parking for Volunteers |
| | 1 st Floor | Library/books/Store/Cafe | 29 | Parking for HOD |
| | 2 nd Floor | Religion Center | 30 | Transport Mall |
| 19 | Bank | | 31 | Parking for OC |
| 20 | Medical Center | | 32-38 | Access Control Points |
| 21 | Fitness Center/Swimming pool | | 39 | Alatau Concert Hall - Daily HOD Meeting |
| 22 | Supermarket/Cafe for staff | | 40 | Ice Palace |
| 23 | 1 st Floor | Post office | | |
| | 2 nd Floor | Household service (Traylor, key/shoes repair, copy center) | | |

32 ----- 39 Access to Alatau Concert Hall

8.5. ALMATY CITY MAP



PARTNERS OF THE 28TH WINTER UNIVERSIADE



SAMRUK
KAZYNA

АВТОСАЛОНЫ
ВИРАЖ
Официальный дилер «ГАЗ»



TECHNODOM
Doing everything with love!

БАЗИС-A

EMS — **KAZPOST** —



COMPLETE SERVICE
INTERNATIONAL TOURIST COMPANY

hymbulak
MOUNTAIN RESORT

Odami-Ain
KAZAKHSTAN
NATIONAL SOUVENIRS

Dr.WEB®
Антивирус

MBS
Mountain innovation and safety design
By MBS Group



TKR
GROUP

air astana

ASTANA BANK

TECHNOGYM
The Wellness Company

СБЕРБАНК

OMRON
Все для здоровья



Coca-Cola

4G **activ**

MEGA

GLOBAL
СТРОИТЕЛЬНАЯ КОМПАНИЯ

DHL

INVITRO®

Arahis

PROMENADE
Fashion Center

АС БОЛАН!
ПРЯМОГО АППЕЛИТА!
— ААМАТЫ —
UNIFOOD
АТ. БЫСТРЫЕ СВЕЖИЕ
БУРГЕРЫ
& ДРУГОЕ

MAIN MEDIA PARTNERS

KAZSPORT

ХАБАР

ҚАЗАҚСТАН

OFFICIAL MEDIA PARTNERS

PROSPORTS.KZ

el.kz

ZIB
THE KAZAKH DRAMA

VESTI.KZ
— Живи спортом! —



BNEWS | **KZ**
АҚПАРАТТЫҚ АГЕНТТІГІ

kazinform
Международное Информационное Агентство

radiONS
NUR.KZ
КАЗАХСТАНСКИЙ ПОРТАЛ



28th WINTER UNIVERSIADE 2017 ALMATY
ORGANIZING COMMITTEE
REPUBLIC OF KAZAKHSTAN, ALMATY
050013, BAYZAKOV STREET, 280
WWW.ALMATY2017.COM