



28TH W I N T E R
UNIVERSIADE
JANUARY 29 - FEBRUARY 8



TECHNICAL HANDBOOK

SNOWBOARD

JANUARY 2017



ALMATY 2017



Dear Participants,

On behalf of the International University Sports Federation, it is both a pleasure and an honour for me to welcome you to the 28th Winter Universiade from 29 January to 8 February, 2017 in Almaty, Kazakhstan.

The technical handbooks probably belong to some of the most useful documents during the entire period of the Universiade. That is why so much effort is put into their preparation. Those manuals are always reflecting the amount of work that has been done to prepare such

multi-sport events. The investments in terms of infrastructure and sport facilities are just amazing and we all hope that you will enjoy the remarkable competition conditions that Kazakhstan and the city of Almaty created for all participants.

We therefore would like to thank all parties that worked in very close co-operation with the Organising Committee of the Almaty Winter Universiade and the Student Sports Federation of the Republic of Kazakhstan.

I would like to underline the efforts made throughout the last month by the Technical Delegates of the FISU International Technical Committee for the Winter Universiade. They have worked continuously in close co-operation with the competition managers of the Organising Committee and the International Sports Federations to allow the students to compete in the best possible conditions in a country, which will be showing the magic of winter sports to the world.

We look forward to your participation and we are sure that you will find in this manual all the necessary information that will help you to participate in the competitions in a smooth and proper manner.

Together with the entire FISU Family, I wish you all the best for a most successful 28th Winter Universiade.

**Oleg Matytsin,
FISU President**



Dear Friends,

It is a pleasure and honour for Almaty to host the 28th Winter Universiade 2017, which has been one of the largest and prestigious multi-sporting event in the world for more than a half a century. We are pleased to extend a warm welcome to the representatives of all the countries or regions participating in the 28th Winter Universiade.

It is the first time for Almaty to host the Winter Universiade and we will make everything possible to hold the competitions at the highest level.

The 28th Winter Universiade is the large image project for Almaty, and for our multinational country. As you know, our country has a successful experience in organizing international projects, forums, and we ensure making our best to hold this Winter Games.

We would like to highlight the efforts of the International University Sports Federation (FISU) to promote sports values and encourage sports practice in harmony with university spirit. The slogan of the Universiade is "Spread your wings!" It is hoped that it will encourage the youth participating in the competitions to succeed. We are in favour of promoting sports values, along with encouraging friendship, fraternity, fair-play and cooperation between students who will one day have responsibility and even hold key positions in politics, economics, industry and culture.

We are ready to welcome our guests and participants of the 28th Winter Universiade. Three new venues were built for this big event, which are the Athletes' Village for 5,000 people, Almaty Arena with 12,000 seats, and Halyk Arena with a 3,000 seating capacity.

As the successor to the Asian Games Universiade inherited the sports facilities with modern equipment, developed infrastructure and updated cultural centers.

In 2011, Almaty hosted the 7th Asian Winter Games. For this event, the "Sunkar" International Ski-Jumping Complex and the "Alatau" Cross-Country Skiing and Biathlon Stadium were built. Furthermore, the "Medeu" High-Mountain Ice Rink, the "Shymbulak" Ski Resort, and the "Baluan Sholak" Sports Palace were modernized. All these venues are essential elements of the sports infrastructure of Kazakhstan.

We would like to assure that your stay in Almaty will be comfortable and exciting, your expectations will be met and you will come home enriched, with new experience and friendships.

We sincerely believe that the 28th Winter Universiade which became popular around the world will unite a set of the countries on this sport event. The cultural content, the scope and the level of organization of the event will allow you to immerse in the rich history, national traditions, and enjoy the special flavor of our country.

Imangali Tasmagambetov,
OC President

TABLE OF CONTENT

1. INTERNATIONAL AND NATIONAL SPORTS FEDERATIONS	6
2. FISU INTERNATIONAL TECHNICAL COMMITTEE	7
3. ORGANISING COMMITTEE STRUCTURAL CHART	8
4. GENERAL INFORMATION	9
4.1. 28 TH WINTER UNIVERSIADE ALMATY	9
4.2. 28 TH WINTER UNIVERSIADE 2017 COMPETITION SCHEDULE	9
4.3. OPENING AND CLOSING CEREMONIES	9
5. COMPETITION INFORMATION	10
5.1. TECHNICAL COMMITTEE	10
5.2. INTERNATIONAL TECHNICAL OFFICIALS	10
5.3. SNOWBOARD STRUCTURAL CHART	11
5.4. TECHNICAL REGULATIONS	13
5.5. COMPETITION FORMAT	14
5.6. COMPETITION AND TRAINING VENUE INFORMATION	15
5.7. SNOWBOARD COMPETITION SCHEDULE	20
5.8. TRAINING SCHEDULE	20
5.9. TECHNICAL MEETINGS	21
5.10. EQUIPMENT	21
5.11. DOPING CONTROL	23
5.12. AWARDS & MEDALS	24
5.13. PRESS INTERVIEWS	25
5.14. SPORT INFORMATION SERVICES	25
6. SERVICE INFORMATION	27
6.1. ACCREDITATION / SKI PASS	27
6.2. STORAGE & WAX ROOMS	27
6.3. TRANSPORTATION	28
6.4. MEDICAL SERVICES	30
7. OC CONTACTS	31
8. APPENDICES	32
8.1. 28 TH WINTER UNIVERSIADE 2017 COMPETITION SCHEDULE 32	
8.2. VENUE LAYOUTS	33
8.3. DAY BY DAY SCHEDULE	41
8.4. ATHLETES' VILLAGE MAP	43
8.5. ALMATY CITY MAP	44



ABBREVIATIONS

ADAMS	Anti-doping Administration and Management System
AV	Athletes' Village
CIC	FISU International Control Committee
CMI	FISU International Medical Committee
CT	Technical Committee of FISU
CTI-UH	International Technical Committee for the Winter Universiade
EC	Executive Committee of FISU
FIS	International Ski Federation
FISU	International University Sports Federation
HOD	Head of Delegation
ISF	International Sports Federation
ITO	International Technical Officials
KazNADC	Kazakhstan National Anti-Doping Centre
NSF	National Sport Federation
NTO	National Technical Officials
NUSF	National University Sports Federation
OC	Organising Committee of the Winter Universiade
SIC	Sport Information Centre
SID	Sport Information Desk
TO	Technical Officials
TUE	Therapeutic Use Exemption
WADA	World Anti-Doping Agency
WU	Winter Universiade
WUAOC	Winter Universiade Almaty Organising Committee

1. INTERNATIONAL AND NATIONAL SPORTS FEDERATIONS

INTERNATIONAL UNIVERSITY SPORTS FEDERATION (FISU)

President	Mr. Oleg MATYTSIN (RUS)
Secretary General / CEO	Mr. Eric SAINTROND (BEL)
Address	Maison du Sport International, Avenue de Rhodanie 54, CH-1007 Lausanne, Switzerland
Phone	+41 (0) 21 613 0810
Fax	+41 (0) 21 601 5612
E-mail	fisu@fisunet
Website	www.fisu.net

INTERNATIONAL SKI FEDERATION (FIS)

President	Mr. Gian FRANCO KASPER (SUI)
Secretary General / CEO	Ms. Sarah LEWIS (GBR)
Address	Marc Hodler House, Blochstrasse 2, 3653 Oberhofen/Thunersee, Switzerland
Phone	+41 (0)33 244 6161
Fax	+41 (0)33 244 6171
E-mail	mail@fisski.com
Website	www.fis-ski.com

STUDENT SPORTS FEDERATION OF THE REPUBLIC OF KAZAKHSTAN

President	Mr. Kayrat ZAKIRYANOV (KAZ)
Secretary General / CEO	Mr. Zhasnur AKEDILOV (KAZ)
Address	Abay ave. 83/105, 050022 Almaty, Kazakhstan
Phone	+7 (727) 292 10 90
Fax	+7 (727) 239 06 51
E-mail	nssf.kaz@mail.ru
Website	www.fnsu.kz

KAZAKHSTAN SKI ASSOCIATION

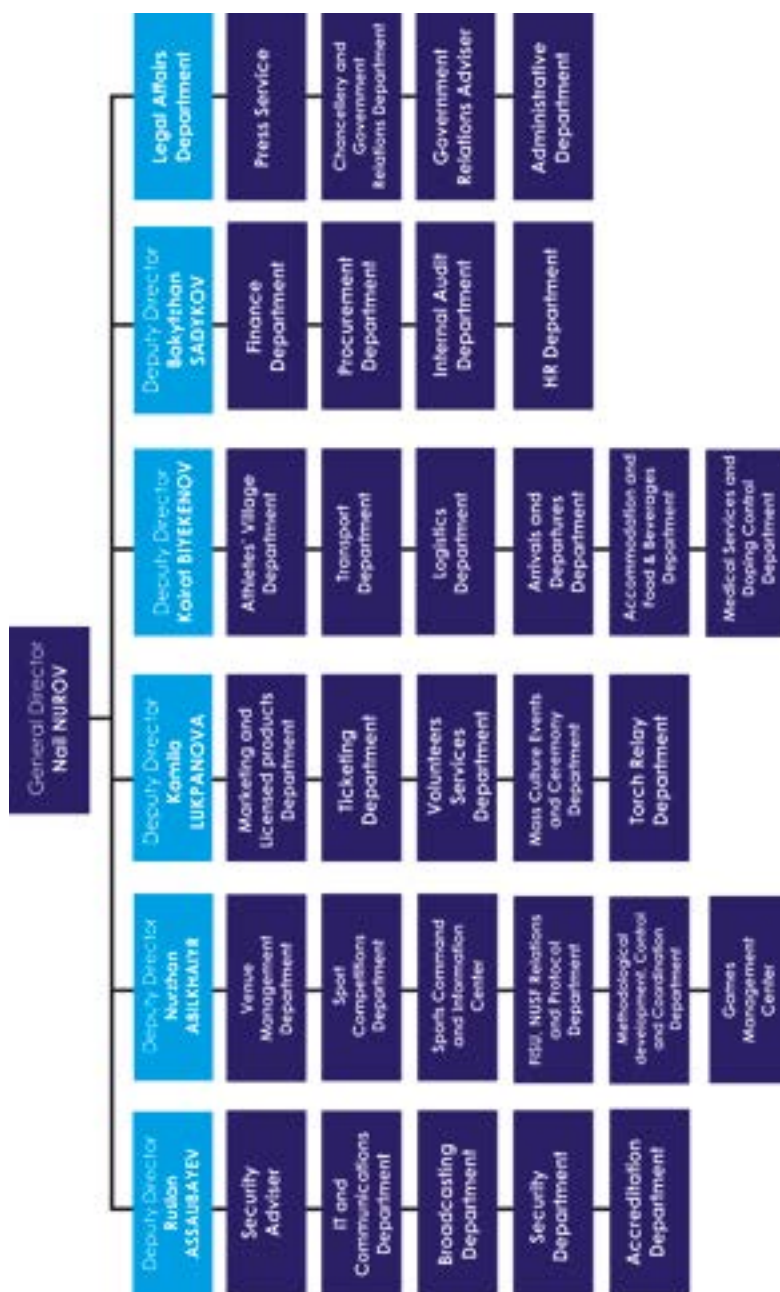
President	Mr. Daulet YERGOZHIN (KAZ)
1 st Vice President	Mr. Yerbolat DOSSAYEV (KAZ)
Secretary General	Mr. Askar VALIYEV (KAZ)
Address	Al-Farabi street 128/8, "Sunkar" International Ski Jumping Complex, 2 nd floor, 050044 Almaty, Kazakhstan
Phone	+7 (727) 396 92 35
Fax	+7 (727) 396 92 22
E-mail	skiz@hotmail.com
Website	www.skisport.kz



2. FISU INTERNATIONAL TECHNICAL COMMITTEE FOR THE WINTER UNIVERSIADE (CTI-UH)

POSITION	FIRST NAME	LAST NAME	COUNTRY
FISU CTI-UH Chair	Roger	ROTH	SUI
FISU CTI-UH Vice Chair	Robert	PHILIP	CAN
FISU Technical Delegate Alpine Skiing	Matjaz	KRANJC	SLO
FISU Technical Delegate Biathlon	Ondrej	RYBAR	CZE
FISU Technical Delegate Cross-Country Skiing	Zofia Stefania	KIELPINSKA	POL
FISU Technical Delegate Curling	Jeanette	JOHNSTON	GBR
FISU Technical Delegate Figure Skating	Marie	LUNDMARK	FIN
FISU Technical Delegate Freestyle Skiing	Magnus	FERRY	SWE
FISU Technical Delegate Ice Hockey	Reto	BERTOLOTTI	SUI
FISU Technical Delegate Ice Hockey	Jarmo	JALARVO	FIN
FISU Technical Delegate Nordic Combined	Karl	LUSTENBERGER	SUI
FISU Technical Delegate Short Track Speed Skating	Nam-Hwan	PARK	KOR
FISU Technical Delegate Ski Jumping	Paul	GANZENHUBER	AUT
FISU Technical Delegate Snowboard	Ola	SUNDEKVIST	SWE
FISU Technical Delegate Speed Skating	Sergio	ANESI	ITA

3. ORGANISING COMMITTEE STRUCTURAL CHART





4. GENERAL INFORMATION

4.1. 28TH WINTER UNIVERSIADE ALMATY

Date:	29 January – 8 February 2017
Location:	Almaty, Republic of Kazakhstan
Sports Programme:	12 Sports (8 Compulsory / 4 Optional) with 86 events
Venues	9 Training and Competition venues

4.2. 28TH WINTER UNIVERSIADE 2017 COMPETITION SCHEDULE

Please refer to Appendix 7.1.

4.3. OPENING AND CLOSING CEREMONIES

4.3.1. OPENING CEREMONY

Date:	January 29, 2017
Location:	Almaty Arena
Time:	19:00 to 21:40

4.3.2. CLOSING CEREMONY

Date:	February 8, 2017
Location:	Almaty Arena
Time:	19:00 to 21:40

5. COMPETITION INFORMATION

5.1. TECHNICAL COMMITTEE

FISU Technical Delegate	Ola SUNDEKVIST (SWE)
FIS Technical Delegate	Denis ZEZIN (RUS)
FIS Technical Delegate	OIha ZINKIV (UKR)
Competition Manager	Yevgeniya SLUNINA (KAZ)
Additional Experts	To be nominated at the 1st General Technical Meeting, if needed

5.2. INTERNATIONAL TECHNICAL OFFICIALS

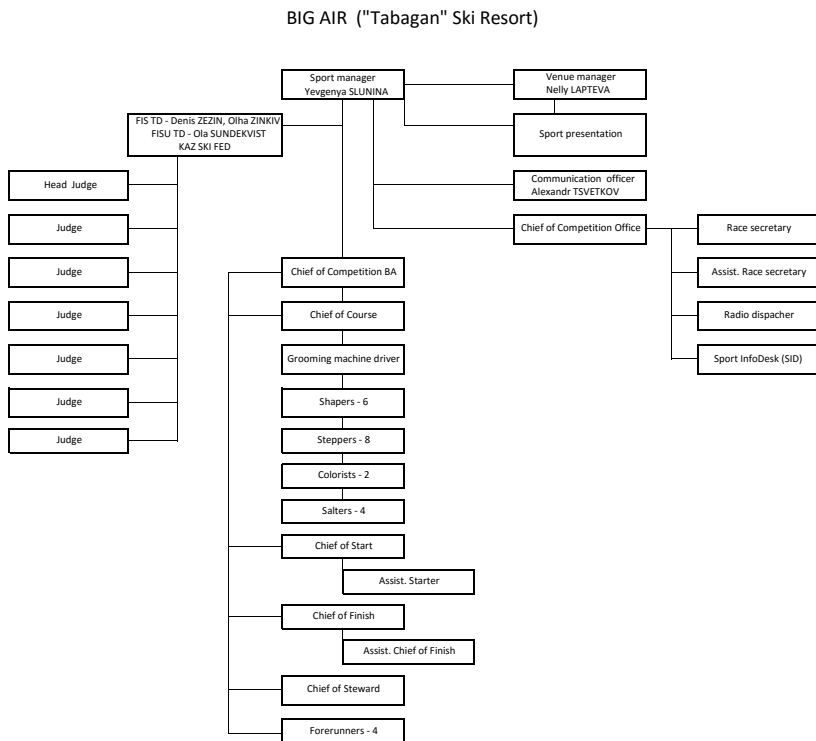
FIS Head Judge	Kevin HIGGINS (CAN)
FIS Scoring Judges	Ruslan AKHTYAMOV (RUS) Oliver HEINRICH (AUT) Markus BETSCHART (SUI) Marin SLADKAROV (BUL) Jin Youl KIM (KOR) Bartosz BILKIEWICZ (POL)



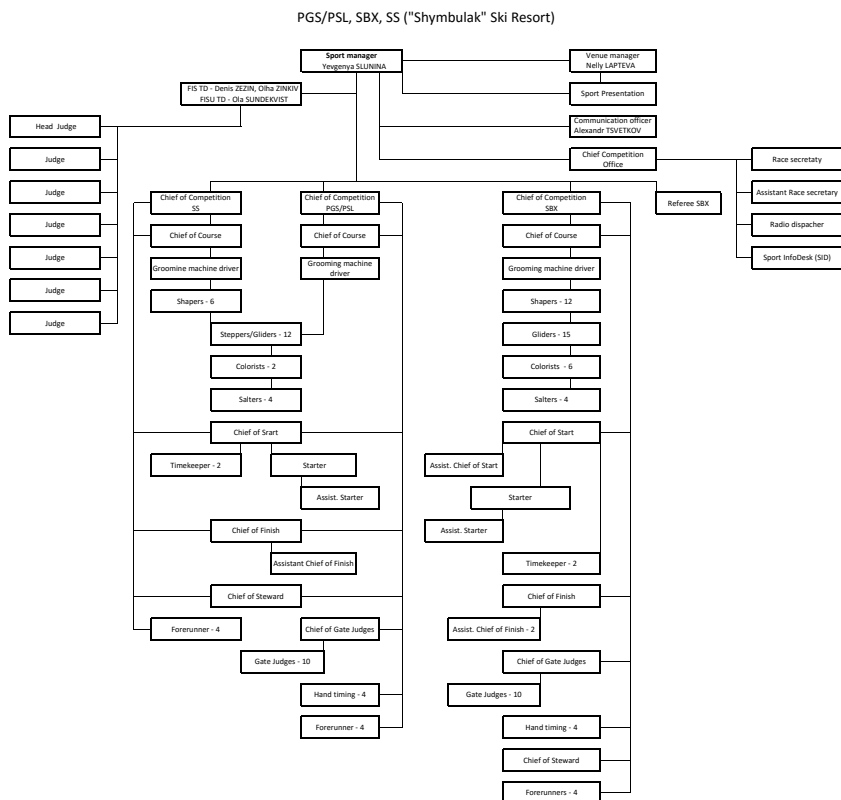


5.3. SNOWBOARD STRUCTURAL CHART

5.3.1. BIG AIR (TABAGAN SKI RESORT)



5.3.2. PGS/PSL, SBX, SS (SHYMBULAK SKI RESORT)



5.4. TECHNICAL REGULATIONS

The events will be organised in accordance with the most recent technical regulations of the International Ski Federation (FIS), except when specifically amended with the WU 2017 Regulations.

The programme includes the following events:

Men	Women
Parallel Giant Slalom (PGS)	Parallel Giant Slalom (PGS)
Parallel Slalom (PSL)	Parallel Slalom (PSL)
Slopestyle (SBS)	Slopestyle (SBS)
Snowboard Cross (SBX)	Snowboard Cross (SBX)
Big Air (BA)	Big Air (BA)

Each country may enter:

Men:	Four (4) athletes in each individual event
Women:	Four (4) athletes in each individual event

At the first General Technical Meeting, the Head of Delegation or his/her representative shall confirm and sign the official entry list of competitors.

Only competitors with an active FIS code are allowed to participate in each snowboard event. Entries are controlled by the Organizer and the FIS Technical Delegate. Only accredited athletes can be considered for the draw of a starting list.

5.4.1. JURY COMPOSITION

In accordance with the FIS ICR Rules (2004.5.2) the Jury will be composed by the following members:

- the TD for all competitions
- the chief of competition for all competitions
- the chief of finish for Snowboard Cross events
- the Head Judge for the Slopestyle and Big Air events
- the Referee for all Alpine events
- FIS Race Director for Snowboard Cross events

At the Winter Universiade the FISU Race Director (FISU TD), as approved by FIS, has a voting right as a member of the Jury for all competitions

5.4.2. PROTEST AND APPEAL

Any protest of a sport or disciplinary nature must reach the Jury according to the regulations laid down by the FIS. Such protest must be accompanied by a deposit of CHF 100.- or equivalent in another valid currency (FIS ICR Art. 2054;

2054.4). This deposit will be returned if the protest is upheld.

Any sport disciplinary situation, which cannot be satisfactorily resolved by the sport technical committees and the sport specific disciplinary regulations, will be reported to the FISU Disciplinary Committee for further action to be taken.

Where appropriate, a report will be sent to FIS.

Each Head of Delegation or his/her deputies are authorized to lodge an appeal against the decision of the Jury. This appeal must be submitted in writing to the Jury of Appeal or competent authority in accordance with the FIS regulation.

5.5. COMPETITION FORMAT

The classification of competitors who are present is made by the Jury.

The FIS points list for some events the FIS or Cup points list (whichever points are higher) will be used to determine the starting order. The first group will consist of 16 and can be reduced to 10 if there are less than 30 competitors or such other number as determined by the Jury.

The draw must take place on the day before the competition. This is not valid for night competitions. The draw must be held in a team captains meeting. A double draw is recommended with a simultaneous draw of the start number and the name of the competitor.

5.5.1. PARALLEL GIANT SLALOM (PGS)

- Qualification phase consist of 2 runs (1 run on blue and 1 run on red course) Add these times.
- Tie breaking in Qualification - The tie will be broken by the best run of two. Best 16 athletes qualify for the Finals.
- Finals phase consist of 2 runs (1 run on blue and 1 run on red course)
- -1/8-finals - 1/4-finals- 1/2-finals- small and big finals
- Competitors' starting order for each event and each discipline is decided according to a specific formula by draw and/or point order during TCM
- The FIS points list provided by FIS must be used for the classification of competitors. If a competitor does not appear in the last valid FIS points list, he shall be assigned to that group of competitors without points.
- Jury can make changes on TCM

5.5.2. PARALLEL SLALOM (PSL)

- See above for PGS



5.5.3. SNOWBOARD CROSS (SBX)

- Qualification 2 runs/best run count
- Finals are based on 16 men / 16 ladies / 4 riders per heat or such other numbers as determined by the Jury
- SBX finals will be run according to a single knockout format

5.5.4. SNOWBOARD SLOPE STYLE (SS)

- Qualification: Heat System with one or two heats
- Seeded by FIS ICR SB Rules
- Qualification: 2 runs / best run counts
- Finals (12 M/6 L): 2 runs / best run counts
- Same start orders for final run 1 and Final run 2 based on results from qualification
- 6 scoring Judges, the high and low scores shall be discarded and the remaining scores will be counted
- Use TV for Video Judging system

5.5.5. SNOWBOARD BIG AIR (BA)

- Qualification: Heat System with one or two heats
- Seeded by FIS ICR SB Rules
- Qualification: 2 runs / best run counts
- Finals (12 M/6 L): 2 runs / best run counts
- Same start orders for final run 1 and Final run 2 based on results from qualification
- 6 scoring Judges, the high and low scores shall be discarded and the remaining scores will be counted

5.6. COMPETITION AND TRAINING VENUE INFORMATION

OC Venue Manager (Shymbulak ski resort)	Nelly LAPTEVA
OC Venue Manager (Tabagan ski resort)	Serik YESTIBAYEV

Venue	Function	Location	Distance to AV
«Shymbulak» Ski Resort	Training/ Competition	Almaty, Gornaya Street,640 43.128298 77.081712	35.4km/57 min
«Tabagan» Ski Resort	Training/ Competition	Almaty, Talgar region, Beskaynar village 77.096682 43.214812	48,7 km/59 min

«Shymbulak» Ski Resort is located in the upper part of the Medeu Valley in the Zailiysky Alatau mountain range, at an elevation of 2,200 metres (7,200 ft.) above sea level. The resort area is about 25 kilometres south of Almaty city by the Medeo road.

«Tabagan» Ski Resort is situated near Almaty city, in village Beskaynar. It was built in 2005. Overall area is 55 hectares. The highest peak is 1650 m.

5.6.3. SLOPES TECHNICAL DATA («SHYMBULAK» SKI RESORT)

Event	Width	Start	Finish	Vertical Drop
Parallel Giant Slalom (PGS)	40m	2433m	2333m	100m
Parallel Slalom (PSL)	40m	2433m	2333m	100m
Slopestyle (SBS)	30m	2662m	2514m	148m
Snowboard Cross (SBX)	Slope 40m Track 6-16m	2566m	2333m	233m

5.6.4. TECHNICAL DATA («TABAGAN» SKI RESORT)

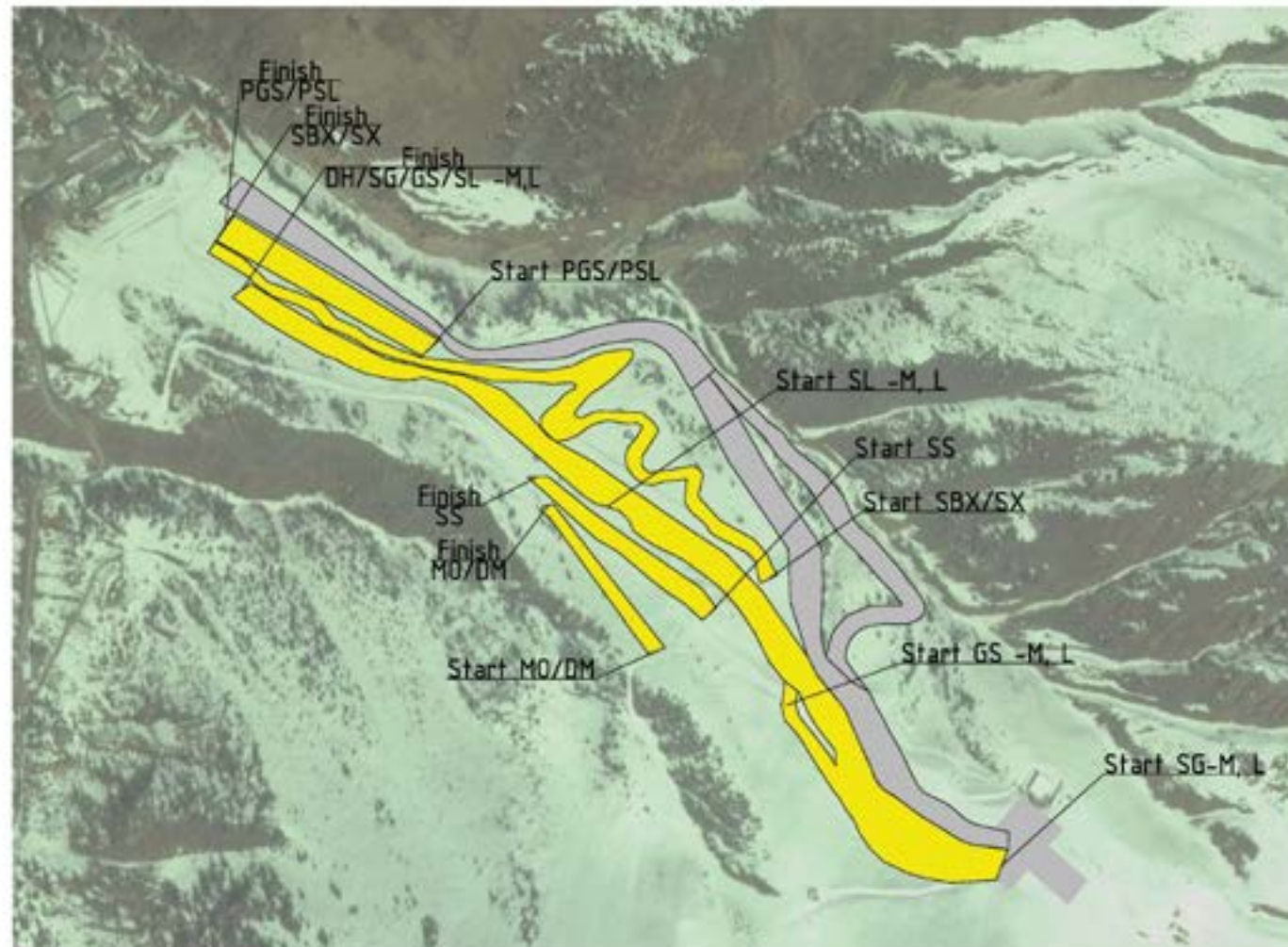
Event	Width	Start	Finish	Vertical Drop
Big Air	30m	1573.2m	1530.5m	42.7m

5.6.5. PROFILE OF THE SLOPES

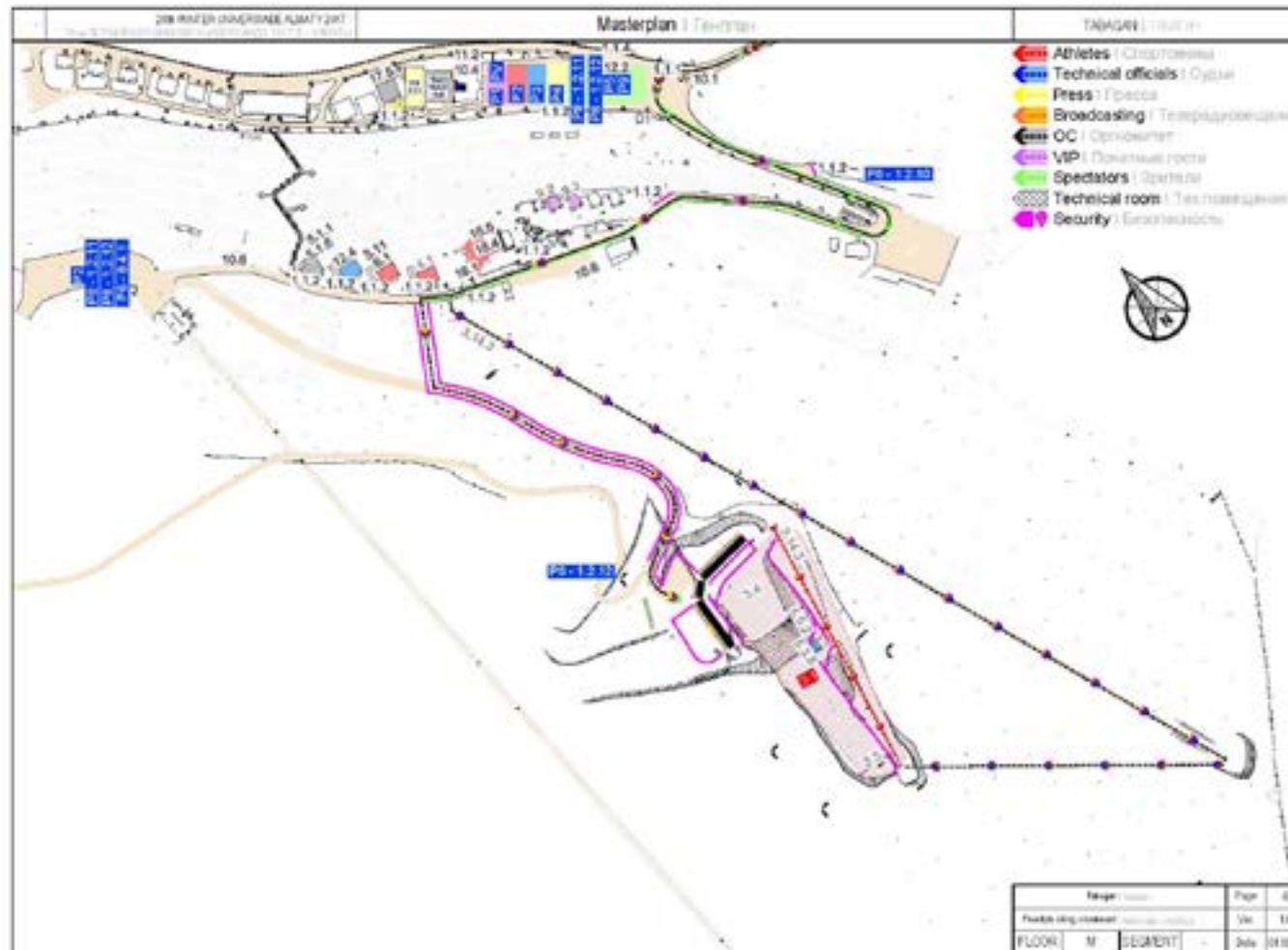
Please refer to Appendix 7.2.

5.6.6. GENERAL LAYOUT («SHYMBULAK» SKI RESORT: PGS, PSL, SBX, SS)

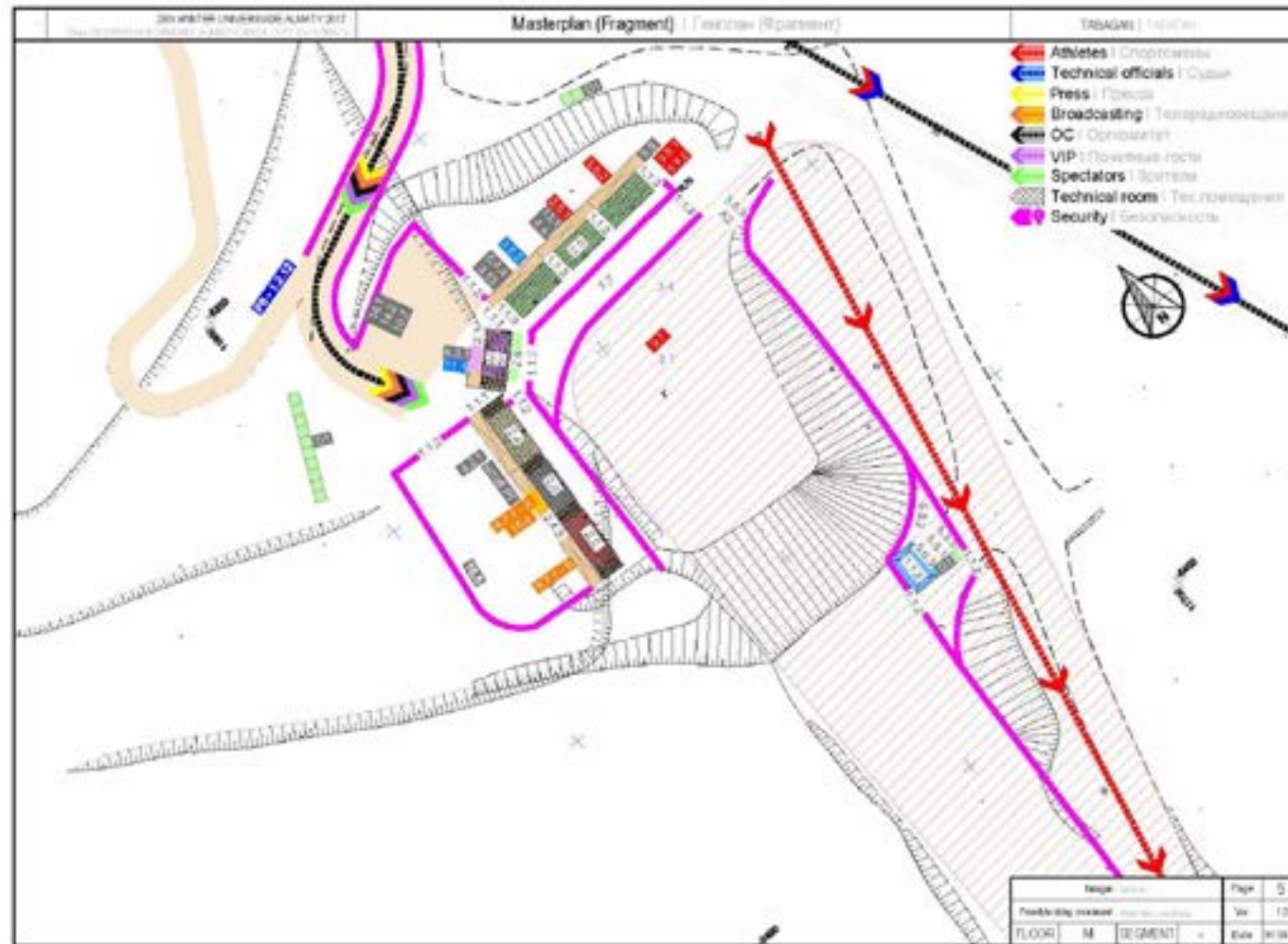
SHYMBULAK SKI RESORT GENERAL LAYOUT



5.6.7. GENERAL LAYOUT («TABAGAN» SKI RESORT: BA)



5.6.8. GENERAL LAYOUT: FRAGMENT («TABAGAN» SKI RESORT: BA)



5.7. SNOWBOARD COMPETITION SCHEDULE

Date	Day	Time	Event	Venue
Jan. 30	Mon	09:00 – 11:00	Qualification Parallel Giant Slalom W/M	«Shymbulak» Ski Resort
		14:00 – 15:00	Final Parallel Giant Slalom W/M	«Shymbulak» Ski Resort
Jan. 31	Tue	09:00 – 11:00	Qualification Parallel Slalom W/M	«Shymbulak» Ski Resort
		14:00 – 15:00	Final Parallel Slalom W/M	«Shymbulak» Ski Resort
Feb. 1	Wed	10:00 – 12:00	Qualification Snowboard Cross W/M	«Shymbulak» Ski Resort
Feb. 2	Thu	14:00 – 15:00	Final Snowboard Cross W/M	«Shymbulak» Ski Resort
Feb. 3	Fri	Reserve Day		
Feb. 5	Sun	10:00 – 12:00	Qualification Slopestyle W/M	«Shymbulak» Ski Resort
		13:00 – 14:00	Final Slopestyle W/M	«Shymbulak» Ski Resort
Feb. 7	Tue	11:00 – 12:30	Qualification Big Air W/A	«Tabagan» Ski Resort
		14:00 – 15:00	Final Big Air W/A	«Tabagan» Ski Resort
Feb. 8	Wed	Reserve Day		

Reserve Day: The OC will do its best to hold all competitions in the scheduled days. However, under exceptional weather conditions the competitions may have to be reported to the next day.

5.8. TRAINING SCHEDULE

5.8.1. UNOFFICIAL TRAININGS

Trainings possibilities in «Shymbulak» Ski Resort on the upper slopes only, starts from the 25th of January 2017.

Trainings possibilities in «Tabagan» Ski Resort starts from the 6th of February 2017.

Date	Day	Time	Event	Venue
Jan 29	Sun	09:00 – 15:30	Parallel Giant Slalom W/M Parallel Slalom W/M	«Shymbulak» Ski Resort



5.8.2. OFFICIAL TRAININGS

Date	Day	Time	Event	Venue
Jan. 31	Tue	10.00 -13.00	Snowboard Cross W/M	«Shymbulak» Ski Resort
Feb. 1	Wed	08.45 - 09.45		
Feb. 2	Thu	12.45 -13.45		
Feb. 4	Sat	10.00 -13.00	Slopestyle W/M	
Feb. 5	Sun	09.00 - 09.45		
Feb. 6	Mon	10.00 -13.00	Big Air W/A	«Tabagan» Ski Resort
Feb. 7	Tue	10.00 -10.45 13:00 - 13:45		

5.9. TECHNICAL MEETINGS

Date	Day	Time	Event	Venue
Jan. 28	Sat	17:00 – 18:00	1 st Technical Committee Meeting	Athletes' Village
		18:00 – 18:30	1 st Team Captain's Meeting (GTM)	
Jan. 29	Sun	12:30 – 13:00	TCM	«Shymbulak» Ski Resort
Jan. 30	Mon	18:00 – 18:30		Athletes' Village
Jan. 31	Tue			
Feb. 1	Wed			
Feb. 3	Fri			
Feb. 4	Sat			
Feb. 5	Sun			
Feb. 6	Mon			

5.10. EQUIPMENT

Clothing and equipment control will in principle follow FIS rules. The equipment control will be carried out in respect of the recent technical FIS regulations if no additional FISU rule will be determined. Each competitor is responsible for the equipment that he/she uses.

The term competition equipment encompasses all items of equipment which the competitor uses in competition. This includes clothing as well as apparatus with technical functions. The entire competition equipment forms a functional unit. All equipment used by Athletes is governed by the FIS Specifications for Competition Equipment which can be found on the following website: www.fis-ski.com (Rules).



5.11. DOPING CONTROL

5.11.1. DOPING CONTROL

Doping control will be carried out in accordance with the rules and regulations of FISU.

5.11.2. LIST OF PROHIBITED SUBSTANCES

The actual list of prohibited substances and treatment is defined in accordance with WADA international standards. NUSF will be responsible for ensuring that their delegations, namely athletes, are made aware of this prohibited list. Ignorance of the prohibited list will in no way constitute a valid excuse for any participant of the WU violating valid anti-doping rules. For the WADA list of prohibited substances, please refer to the following website: www.wada-ama.org.

5.11.3. TESTING

In accordance with the preliminary Test Distribution Plan elaborated by the FISU CMI, the required number of urine and blood tests will be collected both during and out of competition. Athletes may be tested at any time during the period of their accreditation.

Urine and blood tests in and outside competition will be performed by the doping control officers licensed by Kazakhstan National Anti-Doping Centre under the supervision of the FISU CMI.

All test results will be sent to the confidential email address of Chairman of the FISU International Medical Committee (CMI) as well put into ADAMS.

The FISU CMI will bear the responsibility for the result management in the case of a violation of the Anti-doping rules.

5.11.4. DOPING CONTROL STATIONS

Athletes must have their accreditation badges with them at all times in the Doping Control Stations.

Doping Control Station for Snowboard athletes will be allocated at:

1. «Shymbulak» Ski Resort: Ground floor (please refer to Appendix 7.2);
2. «Tabagan» Ski Resort: House #2 (please refer to Appendix 7.2).

5.11.5. THERAPEUTIC USE EXEMPTION (TUE)

Athletes taking part in the Winter Universiade requiring a Therapeutic Use Exemption must apply to the appropriate Anti-doping Organisation as soon as possible. International Standards for Therapeutic Use Exemption will be applied. Should prohibited substances or methods be used after the opening of the WU, applications for emergency TUE should be made to the TUE Committee of FISU.

5.11.6. EMERGENCY TREATMENT

In the case of an emergency, if an athlete has to use prohibited substances or methods during the Winter Universiade, team doctors will be responsible for completing the TUE form and without any delay submit it to the FISU CMI.

5.11.7. CONTACT DETAILS

Should any further information be required, please contact:
Dr. Raushan Akhanova, Head of the Department of Medical Services and Doping Control: r.akhanova@almaty2017.kz

5.12. AWARDS & MEDALS

5.12.1. FLOWER CEREMONY

Immediately after the Snowboard competition, a Flower Ceremony will take place next to the spectators' area. All athletes will go down to that place for the Flower Ceremony.

5.12.2. MEDAL-AWARDING CEREMONY

The Medal-Awarding Ceremonies will take place accordingly to the following schedule:

Date	Day	Time	Medal-Awarding Ceremony	Venue
Jan. 30	Mon	20:00	Parallel Giant Slalom (PGS) W	Medal Plaza
			Parallel Giant Slalom (PGS) M	
Jan. 31	Tue	20:00	Parallel Slalom (PSL) W	Medal Plaza
			Parallel Slalom (PSL) M	
Feb. 1	Wed	20:00	Snowboard Cross (SBX) W	
Feb. 2	Thu	20:00	Snowboard Cross (SBX) M	
Feb. 5	Sun	20:00	Slopestyle (SBS) W	Medal Plaza
			Slopestyle (SBS) M	
Feb. 7	Tue	20:00	Big Air (BA) W	
			Big Air (BA) M	

The OC will inform the Head of delegation, the team officials and the athletes about the time, location and procedure. The medallists are expected to be in the medal awarding preparation and waiting area 30 minutes prior to the ceremony. In case of a no show of a medallist, the medals and mascots maybe delivered to an official of the relevant delegation. The official must wear the uniform of the delegation to take part in the ceremony. S/he must not mount the podium but walk in front of it and take the medal and mascot



in his/her hands. All flags will be raised.

During the Medal-Awarding Ceremony:

- The athletes are not allowed to bring national flags or any other items on the podium and are expected to take their caps off.
- The athletes must wear their delegation's approved uniform or the uniform with which they competed if the ceremony takes place right after the end of the competition and at the same venue.
- During the playing of the FISU anthem and the raising of the flags, they shall face the flags and conduct themselves in a dignified manner all the times. No national anthem is played during the ceremony.
- The detailed rules of this procedure will be in accordance with the rules of FISU.

5.12.2. DIPLOMA OF HONOURS

- The athletes ranked one (1) to eight (8) will receive a Diploma of Honours.
- For team events, each team member will receive a personal diploma of honour mentioning his/her name and the team ranking.
- Diplomas of participation and of honour are not distributed to winners at the Medal-Awarding ceremony. They are handed to the Head of Delegation or an appointed representative of each delegation in the Athletes' Village at a later time.

5.13. PRESS INTERVIEWS

Sub-press Centres are set up in the main/finals competition venues to facilitate interviews and reports by the accredited media. After the competitions, all athletes must exit the Field of Play through the Mixed Zone, and brief interviews are conducted in the Mixed Zone. Coaches and winning athletes/teams take part in press conferences after the Flower Ceremonies at the venue on request of the press manager. During the press conference, interpretation will be provided in the official language (English) and RUS/KAZ languages. If one does not speak the official language, such person should bring his/her own interpreter of the language to the press conferences.

5.14. SPORT INFORMATION SERVICES

5.14.1. ON-LINE SPORTS INFORMATION SERVICE

Internet address:	www.almaty2017.com
-------------------	--

5.14.2. SPORT INFORMATION AT THE VENUE

A Sport Information Desk (SID) will be located at each venue, will distribute most recent information related to the competitions to the SID and receive requests from the team representative(s).

5.14.3. SPORTS INFORMATION AT ATHLETES VILLAGE (AV)

Sports information desks for all 12 sports will be located in the Sports Information Center (SIC) at the Athletes' Village, the SIC will receive the most updated sports information. Any official and/or urgent notice from each competition headquarter will be announced immediately.

5.14.4. OPERATION INFORMATION

Function	Location	Operating Period	Operating Hours
On-line Service	Website Mobile App		
AV SIC	1 st Floor of Pyramid zone	24 Jan – 10 Feb 2017	07:00 – 23:00
Competition Venue 1 SID	«Shymbulak» Ski Resort	27 Jan – 8 Feb 2017	Accordingly training and competition schedule
Competition Venue 2 SID	«Tabagan» Ski Resort	27 Jan – 8 Feb 2017	

5.14.5. LIST OF SPORT INFORMATION BY LOCATION

Contents	Online	Venue SID	AV SIC	ITO Hotel
Competition Schedule	X	X	X	X
Training Schedule and booking info		X	X	X
Start lists	X	X	X	X
Change to Schedules	X	X	X	X
Competition Results	X	X	X	X
Special announcements and urgent notice		X	X	X
Medal Table	X			
Technical Handbooks	X		X	X
Regulations for the WU2017	X			
Daily Sport Bulletin	X			
Non sport information (transport, weather services etc.)		X	X (MIC)	X
Answer and follow up to teams questions		X	X	X



6. SERVICE INFORMATION

6.1. ACCREDITATION / SKI PASS

Location of the Main accreditation centre: Almaty, Alatau district, Momyshtuly avenue, Northern Ryskulova street. At the Athletes' Village (Refer to Athletes' Village Map)

Important: No athlete will be allowed to attend official training or competition without the Accreditation Card. Temporary cards do not allow athletes to take part to official trainings and competitions.

Ski Pass for Snowboard athletes and officials:

Ski Pass at «Shymbulak» Ski Resort:

Ski passes will be provided to Snowboard athletes and officials in order to access to the «Shymbulak» Ski Resort slopes. Ski Passes will provide access to the gondolas on Combi-1 and Combi-2 and all chairlifts, and will be valid from the 25 January to the 8 of February.

Access to the field of play (FoP) for athletes during official trainings and competitions will not require the presence of ski passes, if the athlete is wearing his bib number.

Ski passes will be distributed to the Head of Delegation at the Sport Information Centre at the AV based on the number of Snowboard athletes and officials registered. The HOD will then be responsible for distributing all the received ski-passes to the concerned athletes and officials.

In case the Ski Pass is lost, a new Ski Pass can be provided based on the existing tariffs of «Shymbulak» Ski Resort. It lies on the responsibility of each person as a new Ski Passes has to be bought on the venue. In case Ski Passes will be given to the third party by holder, it will be subjected to withdraw.

Note:

- Holders of Accreditation Cards will have free access to the gondola from Medeu to Shymbulak. There will be a dedicated fast line for the athletes to access to the gondola.
- Spectators will need to buy tickets in order to have an access to gondola from Medeu to Shymbulak.

Ski Pass at «Tabagan» Ski Resort:

No Ski Passes will be needed for «Tabagan» Ski Resort

6.2. STORAGE & WAX ROOMS

6.2.1. STORAGE & WAX ROOMS AT ATHLETES' VILLAGE

Location: Basement floors of three blocks (11, 17, 18) in the Athletes' Village will be used to cover teams' needs on sport equipment storage and waxing cabins. The Storage at Athletes' Village will be available for athletes. OC provides keys to HoD representative (one for one country) at the SIC. The deposit will be

taken from the general deposit that countries pay at the beginning.

The following procedure has been provided for visiting Waxing/Ski storage rooms. Performing the procedure is compulsory for all participant athletes.

Access: Storage & Wax Rooms at Athletes' Village will be available for athletes. The OC will provide keys.

Waxing areas at the Athletes' Village will be equipped with several electric outlets, adequate heating and ventilation, shelves and waste bins, holders for snowboards, an extractor to remove harmful gases, a hand brush, a bench, a broom and an iron.

1. Upon completion of the accommodation procedure, heads of delegations are also invited to visit the Wax cabins and ski storage room for preparation of equipment for competitions.

2. Volunteers should escort athletes and the head of delegation to the relevant areas, for preparation of equipment for competitions.

3. The storage manager will instruct groups of athletes who are planning to use the wax cabins in the rules of their use.

4. Inside the wax cabin, the delegation shall meet the storage manager who will register them in the appropriate journal.

4.1. Upon departure of the delegation, the storage manager must check the condition of the waxing cabin.

4.2. In case of damage or missing property of the athletes and their delegation, storage management, together with the head of the delegation, will draw up an act of loss / damage. The act will indicate the damaged property and missing items, and will determine the cost of the damage. The signed act will be given to the Head of Delegation and a second copy of the report will be given to the accommodation manager.

6.2.2. WAX ROOMS AT SHYMBULAK SKI RESORT

Location: Ground floor the Building #5 will be used to cover teams' needs on waxing cabins.

6.2.3. WAX ROOMS AT TABAGAN SKI RESORT

Location: Area under tribunes in Tabagan Ski Resort will be used to cover teams' needs on sport equipment storage and waxing cabins.

6.3. TRANSPORTATION

6.3.1. GENERAL TRANSPORTATION SYSTEM

The OC guarantees the transportation of every one that is accredited. The Transportation Committee has established the necessary organization to plan the transportation needs of WU from the day of the opening of the AV (24 January).



Transportation for the Snowboard athletes: buses from AV transportation mall will deliver athletes to Medeu, after athletes will use Gondola to reach the Venue «Shymbulak» Ski Resort.

6.3.2. COMPETITION & TRAINING TRANSPORTATION

Routes:

- TA 9 «Athletes' Village – Shymbulak Ski Resort (cable car station) – Cable Car - Shymbulak Ski Resort - Athletes' Village»
- TA 10 «Athletes' Village – Tabagan – Athletes' Village»

Distance between the Athletes' Village and the Shymbulak Ski Resort (Cable Car Station) – 35.4 km

Travel time between the Athletes' Village and the Shymbulak Ski Resort (Cable Car Station) – 57 min

Distance between the Athletes' Village and the Tabagan – 48.7 km

Travel time between the Athletes' Village and the Tabagan – 59 min

Transport type - tourist bus

Transportation schedule for Snowboard («Shymbulak» Ski Resort)

Date	Departure from the Athletes' Village	Departure from Shymbulak	Number of transport
Jan 29 Mon	06:30 06:45 10:00	13:00 14:30 16:00	6
Jan 30 Tue	06:00 06:10 06:20	13:00 16:00	6
Jan 31 Wed	06:00 06:10 06:20 07:15 07:30	13:00 13:30 14:30 16:00 16:30	6
Feb 1 Thu	06:00 06:15 07:30	13:00 14:00 15:00	6
Feb 2 Fri	08:00 10:00 10:15	13:00 16:00 16:30	6
Feb 3 Sat	Reserve day		
Feb 4 Sun	07:15 07:30 08:00	13:30 14:30 16:00	6

Feb 5 Mon	06:15 06:30	12:30 15:00 15:30	6
--------------	----------------	-------------------------	---

Transportation schedule for Snowboard («Tabagan» Ski Resort)

Date	Departure from the Athletes' Village	Departure from Tabagan	Number of transport
Feb 6 Tue	07:00 07:10 08:00	13:30 14:30 14:45	6
Feb 7 Wed	07:30 08:00	14:00 16:00	6

6.3.3. TRANSPORTATION FOR MEDAL-AWARDING CEREMONIES

Awarding Ceremonies will be held every day at 20.00. Thus, the Transportation Department prepared a specific transportation plan for transferring athletes to the Medal Plaza. All winners will be transported to the Medal plaza by special reserved minibuses.

- TA 16 "Athletes Village – Medal Plaza – Athletes' Village"
- Travel time between the Athletes' Village and the Medal Plaza – 36 min.
- Transport type – minibuses.

If the competition finishes late, winners will be transported directly to the Medal Plaza by separate reserved minibuses from the venue.

For the transportation schedule for the medal awarding ceremonies please refer to the transportation manual.



6.4. MEDICAL SERVICES

6.4.1. GENERAL OVERVIEW

The OC provides accredited persons with free and adequate medical care. This medical care includes all appropriate emergency care, diagnosis and treatment of all injuries and illnesses directly and indirectly related to the WU, and this obligation will begin from the day of the opening of the AV until two (2) days following the closing ceremony. This will not cover medical care while in country if the credential person has already officially left the AV or officially left the host country.

All WU participants must have own medical insurance. Only emergency medical care for WU accredited participants will be covered by the OC.

- The working hours of the Medical Center at the AV will be daily available starting from 6:00 am till 24:00 pm.
- The Pharmacy at the AV will be round-the-clock.

7. OC CONTACTS

Sport Competitions Department

sports@almaty2017.kz



8. APPENDICES

8.1. 28TH WINTER UNIVERSIADE 2017 COMPETITION SCHEDULE - VERSION 06.01.2017



ALMATY 2017 WINTER UNIVERSIADE - COMPETITION SCHEDULE

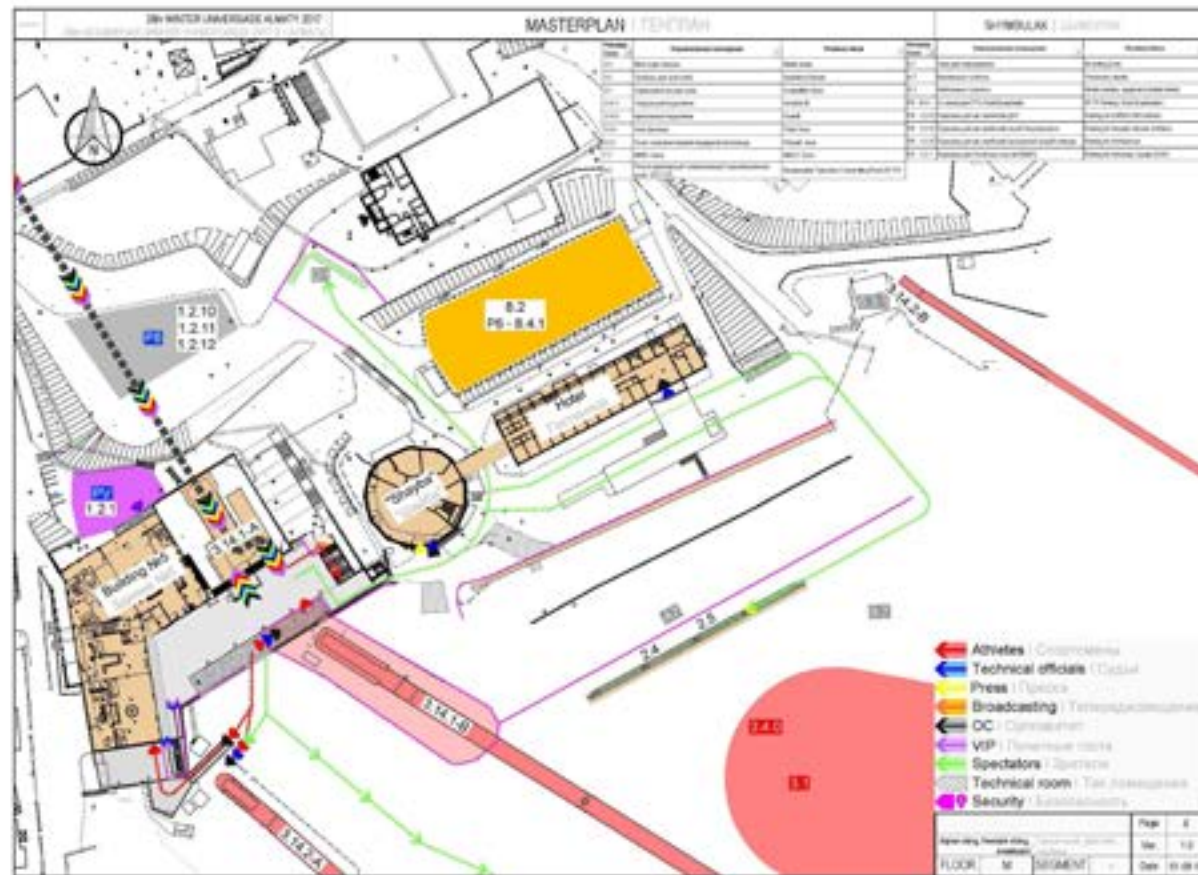
29 JANUARY - 8 FEBRUARY 2017



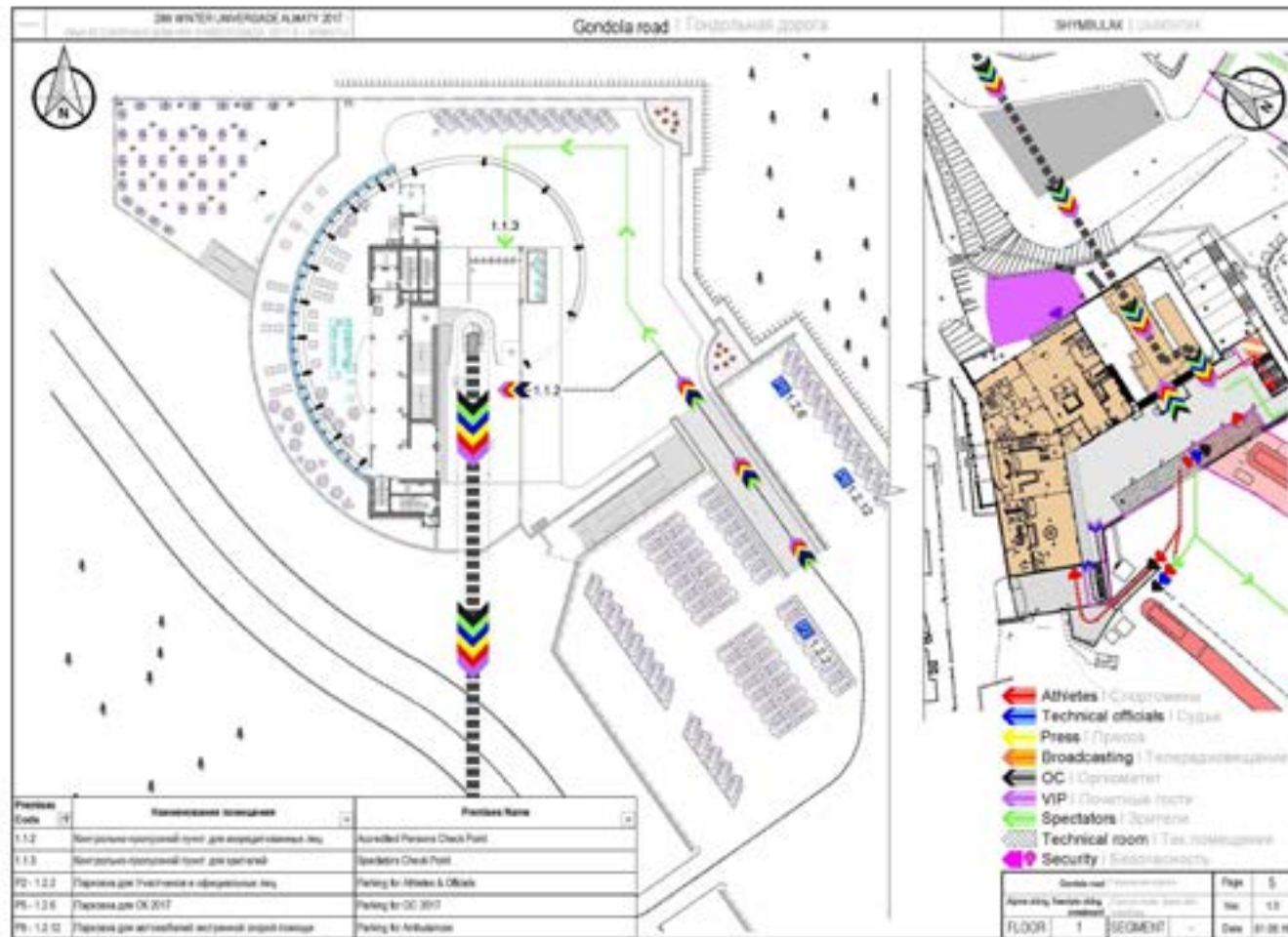
	SATURDAY January - 28	SUNDAY January - 29	MONDAY January - 30	TUESDAY January - 31	WEDNESDAY February - 1	THURSDAY February - 2	FRIDAY February - 3	SATURDAY February - 4	SUNDAY February - 5	MONDAY February - 6	TUESDAY February - 7	WEDNESDAY February - 8	Medal Awardings
CEREMONIES «Almaty Arena»: Figure Skating Arena		19:00 Opening Ceremony										19:00 Closing Ceremony	Venue Medal Plaza Total
FIGURE SKATING «Almaty Arena»: Figure Skating			Unofficial Practice	Official Practice	Ladies 14:30 Short Program	Ice Dance 14:30 Short Dance Ladies 17:00 Free Skating	Men 14:50 Short Programme	Ice Dance 14:00 Free Dance Men 17:00 Free Skating	Exhibition 17:00 EXH				3 0 3
CURLING «Almaty Arena»: Curling		Official Practice M/W	09:00 w1 14:00 M1 19:00 w2	09:00 M2 14:00 w3 19:00 M3	09:00 w4 14:00 M4 19:00 w5	09:00 M5 14:00 w6 19:00 M6	09:00 w7 14:00 M7 19:00 w8	09:00 M8 14:00 w9 19:00 M9	09:00/14:00/19:00 Tie Breaker games if required	09:00 Semi Finals M/W 16:00 Bronze Medal Game M/W	09:00 W Gold Medal Game 14:00 M Gold Medal Game		2 0 2
ICE HOCKEY Men «Halyk Arena»	12:30 SVK - GBR (1) 16:00 JPN - LAT (2) 19:30 KAZ - CHN (3)		12:30 KOR - RUS (4) 16:00 SWE - CZE (5) 19:30 USA - CAN (6)	12:30 JPN - KOR (7) 16:00 SVK - USA (8) 19:30 KAZ - SWE (9)	12:30 RUS - LAT (10) 16:00 CAN - GBR (11) 19:30 CZE - CHN (12)	12:30 GBR - USA (13) 16:00 LAT - KOR (14) 19:30 CHN - SWE (15)	12:30 CAN - SVK (16) 16:00 RUS - JPN (17) 19:30 CZE - KAZ (18)	12:30 D9 - D12 (19) 16:00 QF#1 (20) 19:30 QF#2 (21)	12:30 D10 - D11 (22) 16:00 QF#3 (23) 19:30 QF#4 (24)	12:30 W#19 - W#22 (25) 16:00 W#27 - W#28 (29) 19:30 SF#1 (31) 19:30 SF#2 (32)		11:00 BRONZE (33) 15:00 GOLD (34)	1 0 1
ICE HOCKEY Women «Baltan Sholaks»: Ice Hockey Arena	16:30 CAN - CHN (1) 20:00 KAZ - GBR (2)	12:30 USA - RUS (3)	16:30 CAN - GBR (4) 20:00 CHN - KAZ (5)	20:00 JPN - USA (6)	16:30 GBR - CHN (7) 20:00 KAZ - CAN (8)	20:00 RUS - JPN (9)	20:00 RL D6 - D5 (10)	16:30 SF#1 (11) 20:00 SF#2 (12)	13:00 RL D7 - D6 (13)	13:00 RL D5-D7 (14) 16:30 BRONZE (15) 20:00 GOLD (16)			1 0 1
SHORT TRACK «Baltan Sholaks»: Short Track Arena							Unofficial Training 09:00-20:00	Official Training 09:00-20:00	14:00 1500m W/M 17:00 Heats 3000m Relay W Heats 5000m Relay M	14:00 500m W/M 17:50 SF 3000m Relay W SF 5000m Relay M	14:00 1000m W/M 18:00 F 3000m Relay W F 5000m Relay M		8 0 8
SPEED SKATING «Medeu» High-Mountain Ice Rink	Unofficial Training 09:00 - 13:00 14:30 - 17:30	Official Training 09:00 - 13:00	Official Training 09:00 - 13:00 14:30 - 17:30	09:00-10:45 Official Training 11:00 1'500m W 13:00 5'000m M	09:00-10:45 Official Training 11:00 3'000m W 13:00 5'000m M	09:00-10:45 Official Training 11:00 500m W 13:00 5'000m M	09:00-10:45 Official Training 11:00 5'000m W 13:00 1'000m M	09:00-10:45 Official Training 11:00 1'000m W 13:00 1'000m M	09:00-10:45 Official Training 11:00 Team Pursuit W 13:00 Team Pursuit M	09:00-10:45 Official Training 11:00 Mass Start W 13:00 Mass Start M			0 14 14
ALPINE SKIING «Shymbulaka» Ski Resort		10:00-12:00 Official Free Skiing on Super-G course	Super-G W/M 10:30 Super-G W 13:00 Super-G M	Alpine Combined W 10:00 AC - SG 13:30 AC - SL	Alpine Combined M 10:00 AC - SG 13:30 AC - SL	Reserve Day	Giant Slalom W 10:00 1 st run 13:30 2 nd run	Giant Slalom M 10:00 1 st run 13:30 2 nd run	Parallel Nations Team Event 10:00	Slalom W 10:00 1 st run 13:30 2 nd run	Slalom M 10:00 1 st run 13:30 2 nd run	Reserve day	0 9 9
FREESTYLE SKIING «Shymbulaka» Ski Resort «Tabagana» Ski Resort		«Tabagana» Ski Resort Aerials W/M 10:00 - 13:00 Official Training 14:00 Finals	«Tabagana» Ski Resort Aerials W/M 10:00 - 11:15 Training 11:30 Qualification 13:00-13:45 Training 14:00 Finals	«Tabagana» Ski Resort Mixed Teams Aerials 10:00 - 11:15 Training 11:30 Qualification 13:00-13:45 Training 14:00 Finals	«Shymbulaka» Ski Resort Moguls W/M 09:00 - 12:00 Training 13:00 Finals	«Shymbulaka» Ski Resort Moguls W/M 09:00 - 10:00 Training 10:30 Qualification 13:00 Finals	«Shymbulaka» Ski Resort Dual Moguls W/M 09:00 - 10:00 Training 10:30 Qualification 14:00 Finals	Reserve Day	«Shymbulaka» Ski Resort Ski Cross W/M 11:00 - 14:00 Training 11:00 Qualification	«Shymbulaka» Ski Resort Ski Cross W/M 09:00 - 10:00 Training 11:00 Qualification	«Shymbulaka» Ski Resort Ski Cross W/M 12:00 - 13:30 Training 14:00 Finals	Reserve Day	0 9 9
SNOWBOARD «Shymbulaka» Ski Resort «Tabagana» Ski Resort		«Shymbulaka» Ski Resort Parallel Giant Slalom W/M Parallel Slalom W/M Unofficial Training	«Shymbulaka» Ski Resort Parallel Giant Slalom W/M 09:00 Qualification 14:00 Finals	«Shymbulaka» Ski Resort Parallel Slalom W/M 09:00 Qualification 14:00 Finals Snowboard Cross W/M 10:00-13:00 Training	«Shymbulaka» Ski Resort Snowboard Cross W/M 08:45 - 09:45 Training 10:00 Qualification	«Shymbulaka» Ski Resort Snowboard Cross W/M 12:45 - 13:45 Training 14:00 Finals	Reserve Day	«Shymbulaka» Ski Resort Slopestyle W/M 10:00-13:00 Training	«Shymbulaka» Ski Resort Slopestyle W/M 09:00-09:45 Training 10:00 Qualification 13:00 Finals	«Tabagana» Ski Resort Big Air W/M 10:00-13:00 Training	«Tabagana» Ski Resort Big Air W/M 11:30-12:45 Training 13:00 Qualification 13:00-13:45 Training 14:00 Finals	Reserve Day	0 10 10
BIATHLON «Alatau» Cross – Country Skiing & Biathlon Complex		Unofficial Training 10:30 - 12:00 W 12:15 - 13:45 M	Official Training 11:00 - 13:00 W 13:15 - 15:15 M	Individual M/W 10:30 - 11:05 Zeroing W 11:15 - 12:55 Individual 15km W 13:15 - 14:05 Zeroing M 14:15 - 16:00 Individual 20km M	Official Training Sprint 11:00 - 13:00 W 13:15 - 15:15 M	Sprint M/W 09:30 - 10:20 Zeroing W 10:30 - 12:00 Sprint 7.5km W 12:15 - 13:05 Zeroing M 13:15 - 14:45 Sprint 10km M	Pursuit M/W 11:00-11:45 Zeroing W 12:00-12:50 Pursuit 10km W 13:00-13:45 Zeroing M 14:00-14:50 Pursuit 12.5km M	Official Training Mixed Relay 11:00-13:00 Unofficial Training 13:15-14:15	Mixed Relay 2x6km W + 2x7.5km M 11:00-11:45 Zeroing 12:00-13:30 Mixed Relay	Official Training Mass Start 11:00 - 13:00 W 13:15 - 15:15 M	Mass Start M/W 11:15 - 11:45 Zeroing W 12:00 - 12:45 Mass Start 12.5km W 14:15 - 14:45 Zeroing M 15:00 - 15:45 Mass Start 15km M	Reserve day	0 9 9
CROSS-COUNTRY SKIING «Alatau» Cross – Country Skiing & Biathlon Complex	Unofficial Training W/M 09:00 - 16:00	Individual (C) 11:00 - 14:00 Official Training W/M	Individual (C) 09:00-10:55 Official Training W 11:00-11:45 5km (C) W 11:45-12:25 Official Training M 12:30-13:45 10km (C) M Pursuit (F) 15:00-16:30 Official Training M/W	Pursuit (F) 08:30-10:25 Official Training W 10:30 - 11:15 5km (F) W 11:15-12:55 Official Training M 13:00 - 14:15 10km (F) M	Sprint (C) 11:00-16:00 Official Training W/M	Sprint (C) 10:30-12:25 Official Training W 12:30-13:30 Qualification W/M 13:30 - 14:20 Official Training W 14:45 - 16:20 Finals W/M	Mixed Team Sprint (F) 11:00 - 14:00 Official Training M/W	Mixed Team Sprint (F) 09:00-10:55 Official Training 11:00-12:00 Qualifications 12:05 - 12:55 Official Training 13:00-13:30 Final	Relay W/M 11:00-14:00 Official Training	Relay W/M 09:00-10:55 Official Training W 11:00-12:00 3x5km (C+FF) W 12:00-13:25 Official Training M 13:30-15:00 4x7.5km (CC+FF) M Mass Start (C) 16:00-17:00 Official Training W	Mass Start (C) 11:30-13:25 Official Training W 13:30-15:00 15km (C) W 15:00-17:00 Official Training M	Mass Start (C) 08:00-09:55 Official Training M 10:00-12:00 30km (C) M	1 10 11
NORDIC COMBINED «Sunkam» Ski Resort «Alatau» Cross-Country Skiing & Biathlon Complex		09:00-10:30 Unofficial Training Cross-Country 10km 14:00-15:00 Official Training Ski Jumping K95	Official Training Individual Gundersen 10:00-11:30 Ski Jumping K95 15:00-17:00 Cross-Country 10 km	Individual Gundersen Trial Round K95 11:00 Ski Jumping K95 15:30 Cross-Country 10km	Reserve Day	Official Training 09:00 - 10:30 Cross-Country 10 km 14:00-15:30 Ski Jumping K95	Mass Start Cross-Country 10km Trial Ski Jumping K95 15:30 Ski Jumping K95	Official Training Team Gundersen 09:00 - 11:00 Ski Jumping K95 15:00-16:30 Cross-Country 3x5km	Team Gundersen Trial Ski Jumping K95 10:30 Ski Jumping K95 15:00 Cross-Country 3x5km	Reserve Day			0 3 3
SKI JUMPING «Sunkam» Ski Resort			Official Training 17:00-18:00 K95 Women 18:30-20:00 K95 Men	Official Training 17:00-18:00 K95 Women 18:30-20:00 K95 Men	K95 Individual M/W 16:00 Trial Women 17:30 Individual Women 18:30 Trial Men 19:30 Individual Men	Reserve Day	Official Training Team Competition/ Mixed Relay 17:00 - 18:00 K95 Women 18:00 - 19:30 K95 Men	K95 Mixed Relay 17:00 Trial Mixed 18:30 K95 Mixed Relay	K95 Team M/W 16:00 Trial Team Women 18:30 Team Women 18:00 Trial Team Men 19:00 Team Men	Reserve Day			5 0 5
Medals Awardings	At the venue	0	0	0	0	2	1	0	3	4	6	2	21
	At the Medal Plaza	0	0	8	11	3	10	8	4	7	8	0	64
	In total	0	0	8	11	5	11	8	7	11	14	2	85

8.2. VENUE LAYOUTS

8.2.1. MASTERPLAN (SHYMBULAK SKI RESORT)

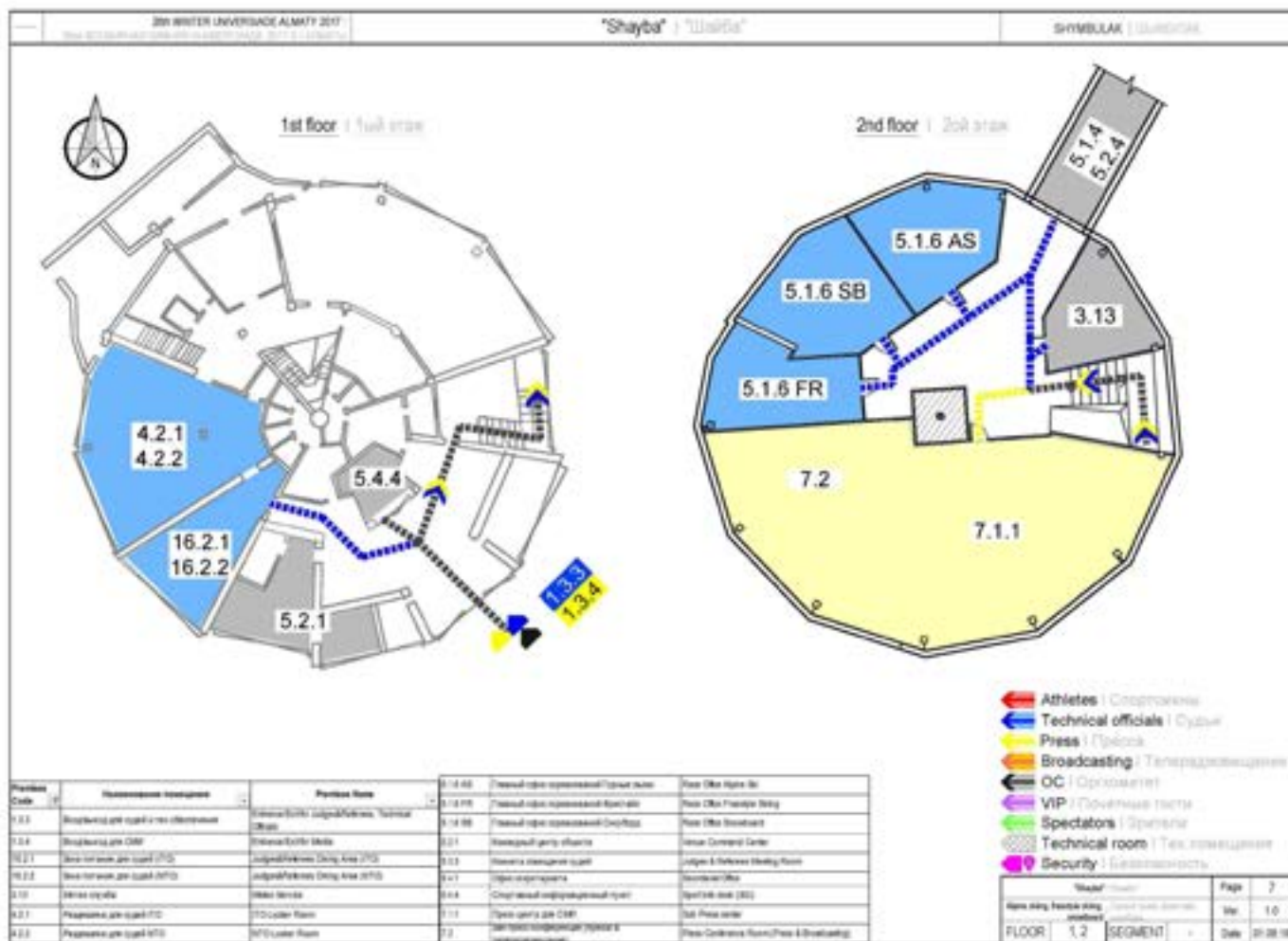


8.2.2. GONDOLA ROAD (SHYMBULAK SKI RESORT)



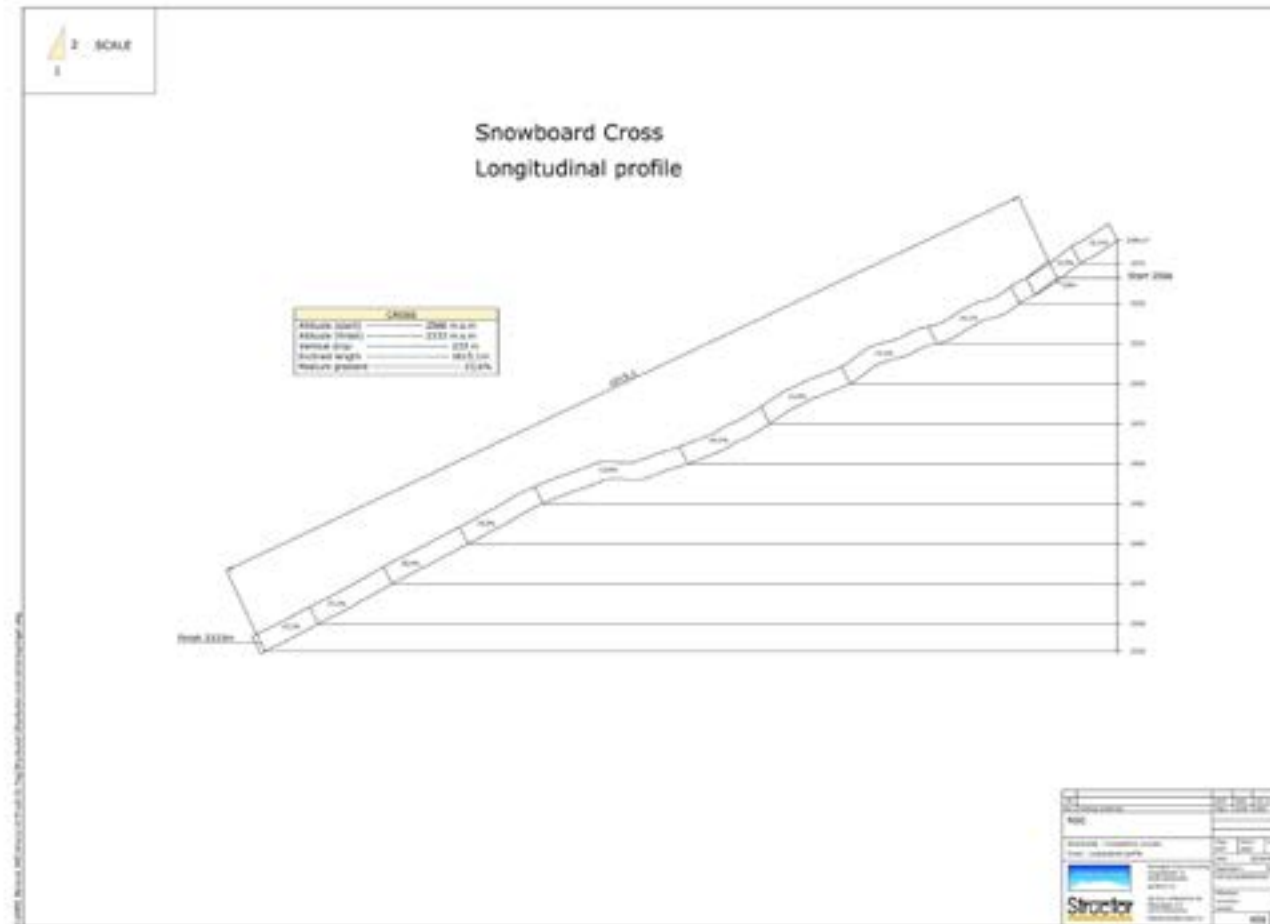


8.2.4. «SHAYBA» BUILDING (SHYMBULAK SKI RESORT)

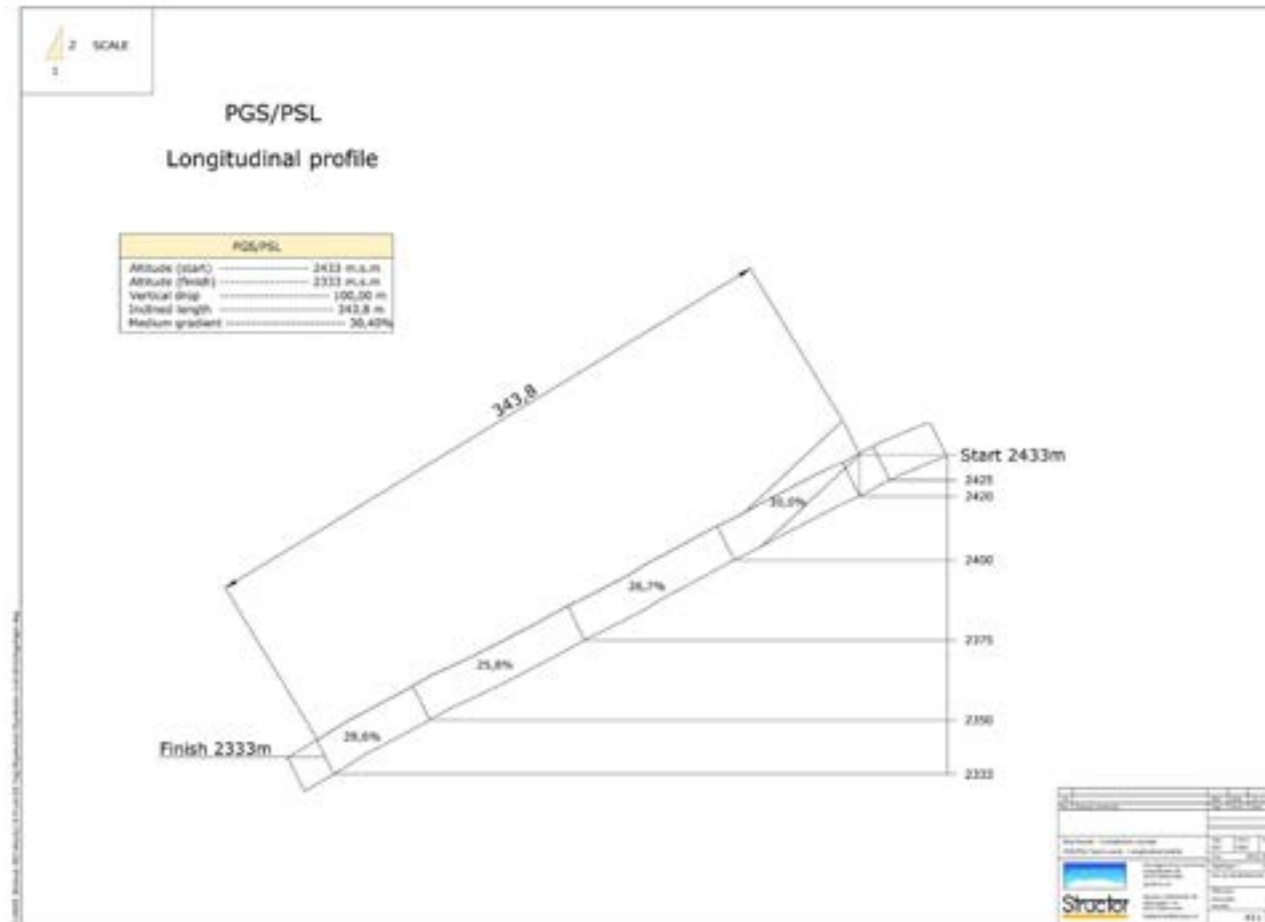




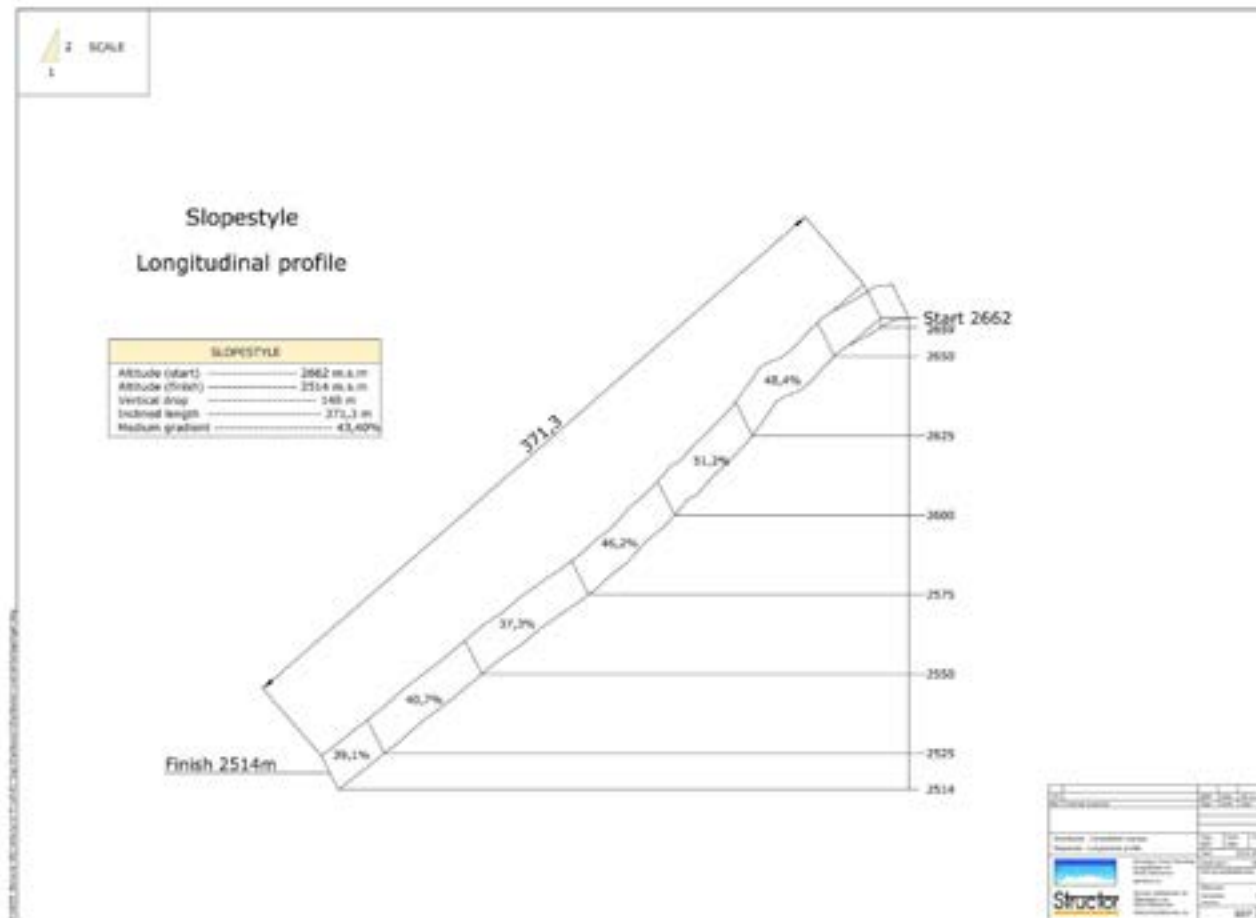
8.2.6. SNOWBOARD CROSS LONGITUDINAL PROFILE



8.2.7. PGS/PSL LONGITUDINAL PROFILE



8.2.8. SLOPESTYLE LONGITUDINAL PROFILE



8.3. DAY BY DAY SCHEDULE

Date	Day	Start Time	Finish Time	Event Name	Venue
28.01.2017	SAT	17:00	18:00	1st Technical Committee Meeting	Athletes Village
		18:00	18:30	1st Team Captains Meeting (GTM)	
29.01.2017	SUN	12:30	13:00	Team Captains Meeting	"Shymbulak" Ski Resort
		9:00	15:30	Unofficial Training PGS	"Shymbulak" Ski Resort
30.01.2017	MON	9:00	11:00	Qualifications - Parallel Giant Slalom	"Shymbulak" Ski Resort
		14:00	15:00	Finals - Parallel Giant Slalom	
		18:00	18:30	Team Captains Meeting	Athletes Village
		20:00		Medal-Awarding Ceremony	Medal Plaza
31.01.2017	TUE	9:00	11:30	Qualifications - Parallel Slalom	"Shymbulak" Ski Resort
		10:00	13:00	Official Training Snowboard Cross	"Shymbulak" Ski Resort
		14:00	15:00	Finals - Parallel Slalom	"Shymbulak" Ski Resort
		18:00	18:30	Team Captains Meeting	Athletes Village
		20:00		Medal-Awarding Ceremony	Medal Plaza
01.02.2017	WED	8:45	9:45	Official Training Snowboard Cross	"Shymbulak" Ski Resort
		10:00	12:00	Qualifications - Snowboard Cross	"Shymbulak" Ski Resort
		18:00	18:30	Team Captains Meeting	Athletes Village
02.02.2017	THU	12:45	13:45	Official Training Snowboard Cross	"Shymbulak" Ski Resort
		14:00	15:00	Finals - Snowboard Cross	"Shymbulak" Ski Resort
02.02.2017	THU	20:00		Medal-Awarding Ceremony	Medal Plaza



03.02.2017	FRI			Reserve Day	"Shymbulak" Ski Resort
		18:00	18:30	Team Captains Meeting	Athletes Village
04.02.2017	SAT	10:00	13:00	Official Training Slopestyle	"Shymbulak" Ski Resort
		18:00	18:30	Team Captains Meeting	Athletes Village
05.02.2017	SUN	9:00	9:45	Official Training Slopestyle	"Shymbulak" Ski Resort
		10:00	12:00	Qualifications - Snowboard Slopestyle	"Shymbulak" Ski Resort
		13:00	14:00	Finals - Snowboard Slopestyle	
		18:00	18:30	Team Captains Meeting	Athletes Village
		20:00		Medal-Awarding Ceremony	Medal Plaza
06.02.2017	MON	10:00	13:00	Official Training Big Air	Tabagan
		18:00	18:30	Team Captains Meeting	Athletes Village
07.02.2017	TUE	10:00	10:45	Official Training Big Air	Tabagan
		11:00	12:30	Qualifications - Snowboard Big Air	Tabagan
		13:00	13:45	Official Training Big Air	Tabagan
		14:00	15:00	Finals - Snowboard Big Air	Tabagan
		20:00		Medal-Awarding Ceremony	Medal Plaza
08.02.2017	WED			Reserve Day	Tabagan

Training

Competition

Ceremony

Technical Meeting

Reserve Day

8.4. ATHLETES' VILLAGE MAP



- | | | | | |
|-------|---|---|---|-------------------------------------|
| 1-10 | Accommodations for Athletes and Officials | 34 | 1 st Floor | Waxing Cabins and ski storage rooms |
| 11 | 1 st Floor | Accreditation center/MC/SIC/Bank & Finance | 1 st Floor | Souvenir store/Kiosk/Technician |
| | 2 nd Floor | JAX management office/Migration police office | 2 nd Floor | Internet cafe |
| | 3 rd Floor | Museum | 25 | 1 st Floor |
| 12 | 2 nd Floor | ISU office | Waxing Cabins and ski storage rooms | 1 st Floor |
| 13-14 | Accommodations for volunteers | Flower boutique/telephone connection/ | Room for volunteers/Lost and found room | 2 nd Floor |
| 14 | Police Office | Meeting room | | |
| 17 | 1 st Floor | Bill storage/dry shooting room | 26 | Mayor's office |
| | 1 st Floor | Entertainment Center | 27 | Drop-off point |
| | 2 nd Floor | Meeting rooms | 28 | Parking for Volunteers |
| 18 | 1 st Floor | Waxing Cabins and ski storage rooms | 29 | Parking for HOD |
| | 1 st Floor | Library/Bookstore/Cafe | 30 | Transport Mall |
| | 2 nd Floor | Religion Center | 31 | Parking for OC |
| 19 | Bank | 32-33 | Access Control Points | |
| 20 | Medical Center | 39 | Alatau Concert Hall - Daily HOD Meeting | |
| 21 | Rhiness Center/Swimming pool | 40 | Ice Palace | |
| 22 | Supermarket/Cafe for staff | | | |
| 23 | 1 st Floor | Post office | | |
| | 2 nd Floor | Household service (Tailor, keyholes repair, color center) | | |

32 39 Access to Alatau Concert Hall

8.5. ALMATY CITY MAP



PARTNERS OF THE 28TH WINTER UNIVERSIADE



SAMRUK
KAZYNA

АВТОСАЛОНЫ
ВИРАЖ
Официальный дилер «ГАЗ»



TECHNODOM
Doing everything with love!

TECHNOGYM

The Wellness Company

БАЗИС-A



СБЕРБАНК



GLOBAL
СТРОИТЕЛЬНАЯ КОМПАНИЯ

EMS — KAZPOST —

OMRON
Все для здоровья



INVITRO

COMPLETE SERVICE
INTERNATIONAL TOURIST COMPANY



спутник

Arahis

hymbulak
MOUNTAIN RESORT

MBS
Mountain innovation and safety design
By MBS Group



PROMENADE
Fashion Center

Әдемі-Ан
KAZAKHSTAN
NATIONAL SOUVENIRS

Dr.WEB®
Антивирус



АҚ БОЛМАҢ!
ПРЯМОГО АППЕЛИТА!
ААМАТЫ
UNIFOOD
АТ. БЫСТРЫЕ СВЕЖИЕ
БУРГЕРЫ
& ДРУГОЕ

MAIN MEDIA PARTNERS

KAZSPORT

ХАБАР

ҚАЗАҚСТАН

OFFICIAL MEDIA PARTNERS

PROSPORTS.KZ

ZIB
THE KAZAKH DRAMA

VESTI.KZ
— Живи спортом!



radioNS

el.kz

BNEWS KZ
АҚПАРАТТЫҚ АГЕНТТІГІ

kazinform
Международное Информационное Агентство

NUR.KZ
КАЗАХСТАНСКИЙ ПОРТАЛ



28th WINTER UNIVERSIADE 2017 ALMATY
ORGANIZING COMMITTEE
REPUBLIC OF KAZAKHSTAN, ALMATY
050013, BAYZAKOV STREET, 280
WWW.ALMATY2017.COM