



28<sup>TH</sup> W I N T E R  
**UNIVERSIADE**  
JANUARY 29 - FEBRUARY 8



# TECHNICAL HANDBOOK

## FIGURE SKATING

JANUARY 2017



ALMATY 2017



Dear Participants,

On behalf of the International University Sports Federation, it is both a pleasure and an honour for me to welcome you to the 28<sup>th</sup> Winter Universiade from 29 January to 8 February, 2017 in Almaty, Kazakhstan.

The technical handbooks probably belong to some of the most useful documents during the entire period of the Universiade. That is why so much effort is put into their preparation. Those manuals are always reflecting the amount of work that has been done to prepare such

multi-sport events. The investments in terms of infrastructure and sport facilities are just amazing and we all hope that you will enjoy the remarkable competition conditions that Kazakhstan and the city of Almaty created for all participants.

We therefore would like to thank all parties that worked in very close co-operation with the Organising Committee of the Almaty Winter Universiade and the Student Sports Federation of the Republic of Kazakhstan.

I would like to underline the efforts made throughout the last month by the Technical Delegates of the FISU International Technical Committee for the Winter Universiade. They have worked continuously in close co-operation with the competition managers of the Organising Committee and the International Sports Federations to allow the students to compete in the best possible conditions in a country, which will be showing the magic of winter sports to the world.

We look forward to your participation and we are sure that you will find in this manual all the necessary information that will help you to participate in the competitions in a smooth and proper manner.

Together with the entire FISU Family, I wish you all the best for a most successful 28<sup>th</sup> Winter Universiade.

**Oleg Matytsin,  
FISU President**



Dear Friends,

It is a pleasure and honour for Almaty to host the 28<sup>th</sup> Winter Universiade 2017, which has been one of the largest and prestigious multi-sporting event in the world for more than a half a century. We are pleased to extend a warm welcome to the representatives of all the countries or regions participating in the 28<sup>th</sup> Winter Universiade.

It is the first time for Almaty to host the Winter Universiade and we will make everything possible to hold the competitions at the highest level.

The 28<sup>th</sup> Winter Universiade is the large image project for Almaty, and for our multinational country. As you know, our country has a successful experience in organizing international projects, forums, and we ensure making our best to hold this Winter Games.

We would like to highlight the efforts of the International University Sports Federation (FISU) to promote sports values and encourage sports practice in harmony with university spirit. The slogan of the Universiade is "Spread your wings!" It is hoped that it will encourage the youth participating in the competitions to succeed. We are in favour of promoting sports values, along with encouraging friendship, fraternity, fair-play and cooperation between students who will one day have responsibility and even hold key positions in politics, economics, industry and culture.

We are ready to welcome our guests and participants of the 28<sup>th</sup> Winter Universiade. Three new venues were built for this big event, which are the Athletes' Village for 5,000 people, Almaty Arena with 12,000 seats, and Halyk Arena with a 3,000 seating capacity.

As the successor to the Asian Games Universiade inherited the sports facilities with modern equipment, developed infrastructure and updated cultural centers.

In 2011, Almaty hosted the 7<sup>th</sup> Asian Winter Games. For this event, the "Sunkar" International Ski-Jumping Complex and the "Alatau" Cross-Country Skiing and Biathlon Stadium were built. Furthermore, the "Medeu" High-Mountain Ice Rink, the "Shymbulak" Ski Resort, and the "Baluan Sholak" Sports Palace were modernized. All these venues are essential elements of the sports infrastructure of Kazakhstan.

We would like to assure that your stay in Almaty will be comfortable and exciting, your expectations will be met and you will come home enriched, with new experience and friendships.

We sincerely believe that the 28<sup>th</sup> Winter Universiade which became popular around the world will unite a set of the countries on this sport event. The cultural content, the scope and the level of organization of the event will allow you to immerse in the rich history, national traditions, and enjoy the special flavor of our country.

**Imangali Tasmagambetov,**  
**OC President**

## TABLE OF CONTENT

|  |           |
|--|-----------|
| <b>1. INTERNATIONAL AND NATIONAL SPORTS FEDERATIONS</b>            | <b>6</b>  |
| <b>2. FISU INTERNATIONAL TECHNICAL COMMITTEE</b>                   | <b>7</b>  |
| <b>3. ORGANISING COMMITTEE STRUCTURAL CHART</b>                    | <b>8</b>  |
| <b>4. GENERAL INFORMATION</b>                                      | <b>9</b>  |
| 4.1. 28 <sup>TH</sup> WINTER UNIVERSIADE ALMATY                    | 9         |
| 4.2. 28 <sup>TH</sup> WINTER UNIVERSIADE 2017 COMPETITION SCHEDULE | 9         |
| 4.3. OPENING AND CLOSING CEREMONIES                                | 9         |
| <b>5. COMPETITION INFORMATION</b>                                  | <b>10</b> |
| 5.1. TECHNICAL COMMITTEE   | 10        |
| 5.2. INTERNATIONAL TECHNICAL OFFICIALS                             | 10        |
| 5.3. SPEED SKATING STRUCTURAL CHART                                | 11        |
| 5.4. TECHNICAL REGULATIONS   | 13        |
| 5.5. COMPETITION FORMAT  | 14        |
| 5.6. COMPETITION AND TRAINING VENUE INFORMATION                    | 16        |
| 5.7. SPEED SKATING COMPETITION SCHEDULE                            | 18        |
| 5.8. TRAINING SCHEDULE   | 18        |
| 5.9. TECHNICAL MEETINGS  | 20        |
| 5.10. EQUIPMENT  | 20        |
| 5.11. DOPING CONTROL   | 20        |
| 5.12. AWARDS & MEDALS  | 21        |
| 5.13. PRESS INTERVIEWS   | 23        |
| 5.14. SPORT INFORMATION SERVICES                                   | 23        |
| <b>6. SERVICE INFORMATION</b>                                      | <b>25</b> |
| 6.1. ACCREDITATION   | 25        |
| 6.2. TRANSPORTATION  | 25        |
| 6.4. MEDICAL SERVICES  | 27        |
| <b>7. OC CONTACTS</b>  | <b>27</b> |
| <b>8. APPENDICES</b>   | <b>28</b> |
| 8.1. 28 <sup>TH</sup> WINTER UNIVERSIADE 2017 COMPETITION SCHEDULE | 28        |
| 8.2. VENUE LAYOUTS   | 29        |
| 8.3. DAY BY DAY SCHEDULE   | 34        |
| 8.4. ATHLETES' VILLAGE MAP   | 37        |
| 8.5. ALMATY CITY MAP   | 38        |



## ABBREVIATIONS

|                |  |
|----------------|--|
| <b>ADAMS</b>   | Anti-doping Administration and Management System             |
| <b>AV</b>      | Athletes' Village  |
| <b>CIC</b>     | FISU International Control Committee                         |
| <b>CMI</b>     | FISU International Medical Committee                         |
| <b>CT</b>      | Technical Committee of FISU                                  |
| <b>CTI-UH</b>  | International Technical Committee for the Winter Universiade |
| <b>EC</b>      | Executive Committee of FISU                                  |
| <b>FISU</b>    | International University Sports Federation                   |
| <b>HOD</b>     | Head of Delegation   |
| <b>ISF</b>     | International Sports Federation                              |
| <b>ISU</b>     | International Skating Union                                  |
| <b>ITO</b>     | International Technical Officials                            |
| <b>KazNADC</b> | Kazakhstan National Anti-Doping Centre                       |
| <b>NSF</b>     | National Sport Federation                                    |
| <b>NTO</b>     | National Technical Officials                                 |
| <b>NUSF</b>    | National University Sports Federation                        |
| <b>OC</b>      | Organising Committee of the Winter Universiade               |
| <b>SIC</b>     | Sport Information Centre                                     |
| <b>SID</b>     | Sport Information Desk                                       |
| <b>TD</b>      | Technical Delegate   |
| <b>TO</b>      | Technical Officials  |
| <b>TUE</b>     | Therapeutic Use Exemption                                    |
| <b>WADA</b>    | World Anti-Doping Agency                                     |
| <b>WU</b>      | Winter Universiade   |
| <b>WUAOC</b>   | Winter Universiade Almaty Organising Committee               |

# 1. INTERNATIONAL AND NATIONAL SPORTS FEDERATIONS

## INTERNATIONAL UNIVERSITY SPORTS FEDERATION (FISU)

|                         |   |
|-------------------------|---|
| President               | Mr. Oleg MATYTSIN (RUS)   |
| Secretary General / CEO | Mr. Eric SAINTROND (BEL)  |
| Address                 | Maison du Sport International, Avenue de Rhodanie 54, CH-1007 Lausanne, Switzerland |
| Phone                   | +41 (0) 21 613 0810   |
| Fax                     | +41 (0) 21 601 5612   |
| E-mail                  | fisufisu.net  |
| Website                 | www.fisu.net  |

## INTERNATIONAL SKATING UNION (ISU)

|                  |  |
|------------------|--|
| President        | Mr Jan DIJKEMA (NED)                       |
| Director General | Mr Fredi SCHMID (SUI)                      |
| Address          | Avenue Juste-Olivier 17, CH-1006, Lausanne |
| Phone            | +41 21 612 6666                            |
| Fax              | +41 21 612 6677                            |
| E-mail           | info@isu.ch                                |
| Website          | www.isu.org                                |

## STUDENT SPORTS FEDERATION OF THE REPUBLIC OF KAZAKHSTAN

|                         |   |
|-------------------------|---|
| President               | Mr. Kayrat ZAKIRYANOV (KAZ)                 |
| Secretary General / CEO | Mr. Zhasnur AKEDILOV (KAZ)                  |
| Address                 | Abay Ave. 83/105, 050022 Almaty, Kazakhstan |
| Phone                   | +7 (727) 292 10 90                          |
| Fax                     | +7 (727) 239 06 51                          |
| E-mail                  | nssf.kaz@mail.ru                            |
| Website                 | www.fnsu.kz                                 |

## NATIONAL SKATING FEDERATION OF KAZAKHSTAN (NSF OF KZ)

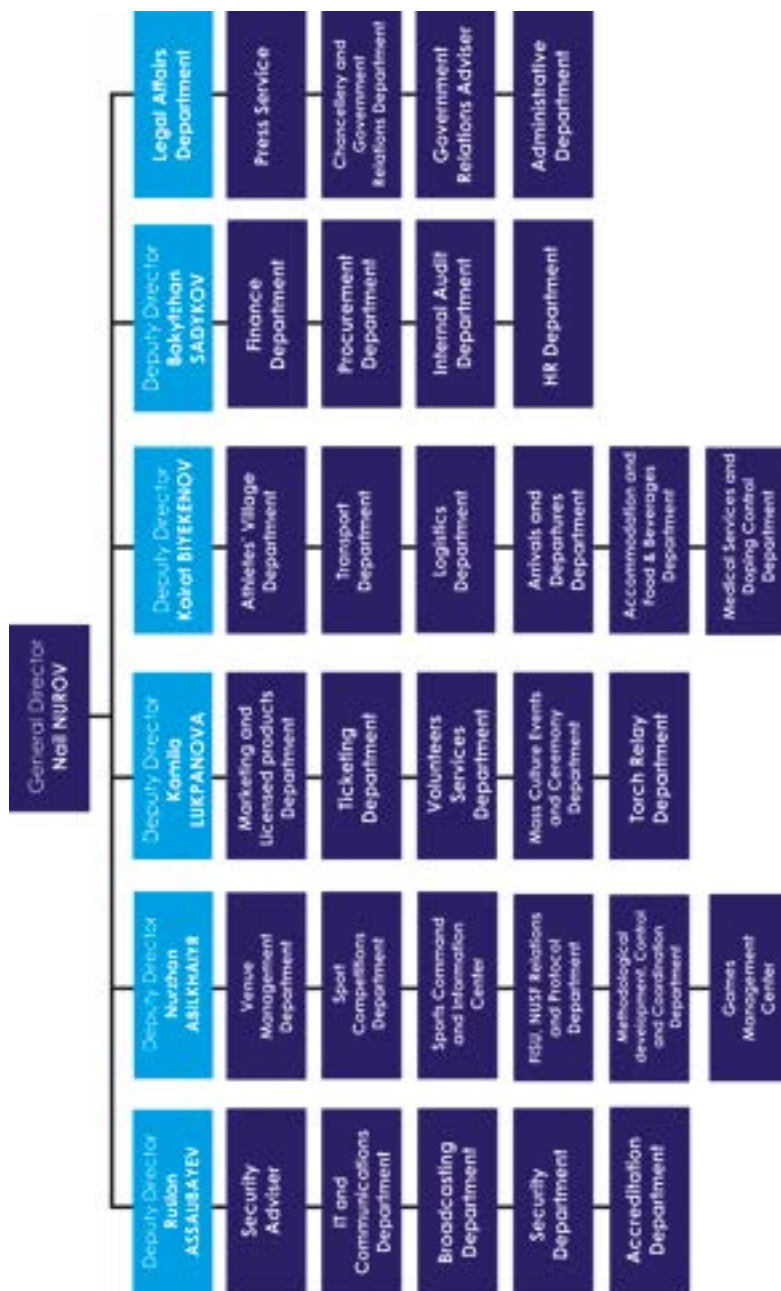
|                   |   |
|-------------------|---|
| President         | Mr.Vassiliy KRYLOV (KAZ)                            |
| CEO               | Mr.Radik BIKCHANTAYEV (KAZ)                         |
| Secretary General | Mrs.Anzhelika MAKISHEVA (KAZ)                       |
| Address           | 47, Kabanbay Batura Ave, 010000, Astana, Kazakhstan |
| Phone             | +7(717) 2706760                                     |
| Fax               | +7(727) 3943486                                     |
| E-mail            | skatingkz@mail.ru                                   |
| Website           | www.skating.kz                                      |



## 2. FISU INTERNATIONAL TECHNICAL COMMITTEE FOR THE WINTER UNIVERSIADE (CTI-UH)

| POSITION   | FIRST NAME     | LAST NAME    | COUNTRY |
|--|----------------|--------------|---------|
| FISU CTI-UH Chair                                    | Roger          | ROTH         | SUI     |
| FISU CTI-UH Vice Chair                               | Robert         | PHILIP       | CAN     |
| FISU Technical Delegate<br>Alpine Skiing             | Matjaz         | KRANJC       | SLO     |
| FISU Technical Delegate<br>Biathlon                  | Ondrej         | RYBAR        | CZE     |
| FISU Technical Delegate<br>Cross-Country Skiing      | Zofia Stefania | KIELPINSKA   | POL     |
| FISU Technical Delegate<br>Curling                   | Jeanette       | JOHNSTON     | GBR     |
| FISU Technical Delegate<br>Figure Skating            | Marie          | LUNDMARK     | FIN     |
| FISU Technical Delegate<br>Freestyle Skiing          | Magnus         | FERRY        | SWE     |
| FISU Technical Delegate<br>Ice Hockey                | Reto           | BERTOLOTTI   | SUI     |
| FISU Technical Delegate<br>Ice Hockey                | Jarmo          | JALARVO      | FIN     |
| FISU Technical Delegate<br>Nordic Combined           | Karl           | LUSTENBERGER | SUI     |
| FISU Technical Delegate<br>Short Track Speed Skating | Nam-Hwan       | PARK         | KOR     |
| FISU Technical Delegate<br>Ski Jumping               | Paul           | GANZENHUBER  | AUT     |
| FISU Technical Delegate<br>Snowboard                 | Ola            | SUNDEKVIST   | SWE     |
| FISU Technical Delegate<br>Speed Skating             | Sergio         | ANESI        | ITA     |

### 3. ORGANISING COMMITTEE STRUCTURAL CHART







## 4. GENERAL INFORMATION

### 4.1. 28<sup>TH</sup> WINTER UNIVERSIADE ALMATY

|                   |  |
|-------------------|--|
| Date:             | 29 January – 8 February 2017                         |
| Location:         | Almaty, Republic of Kazakhstan                       |
| Sports Programme: | 12 Sports (8 Compulsory / 4 Optional) with 86 Events |
| Venues            | 9 Training and Competition venues                    |

### 4.2. 28<sup>TH</sup> WINTER UNIVERSIADE 2017 COMPETITION SCHEDULE

Please refer to Appendix 7.1

## 4.3. OPENING AND CLOSING CEREMONIES

### 4.3.1. OPENING CEREMONY

|           |                  |
|-----------|------------------|
| Date:     | January 29, 2017 |
| Location: | Almaty Arena     |
| Time:     | 19:00 to 21:40   |

### 4.3.2. CLOSING CEREMONY

|           |                  |
|-----------|------------------|
| Date:     | February 8, 2017 |
| Location: | Almaty Arena     |
| Time:     | 19:00 to 21:40   |

## 5. COMPETITION INFORMATION

### 5.1. TECHNICAL COMMITTEE

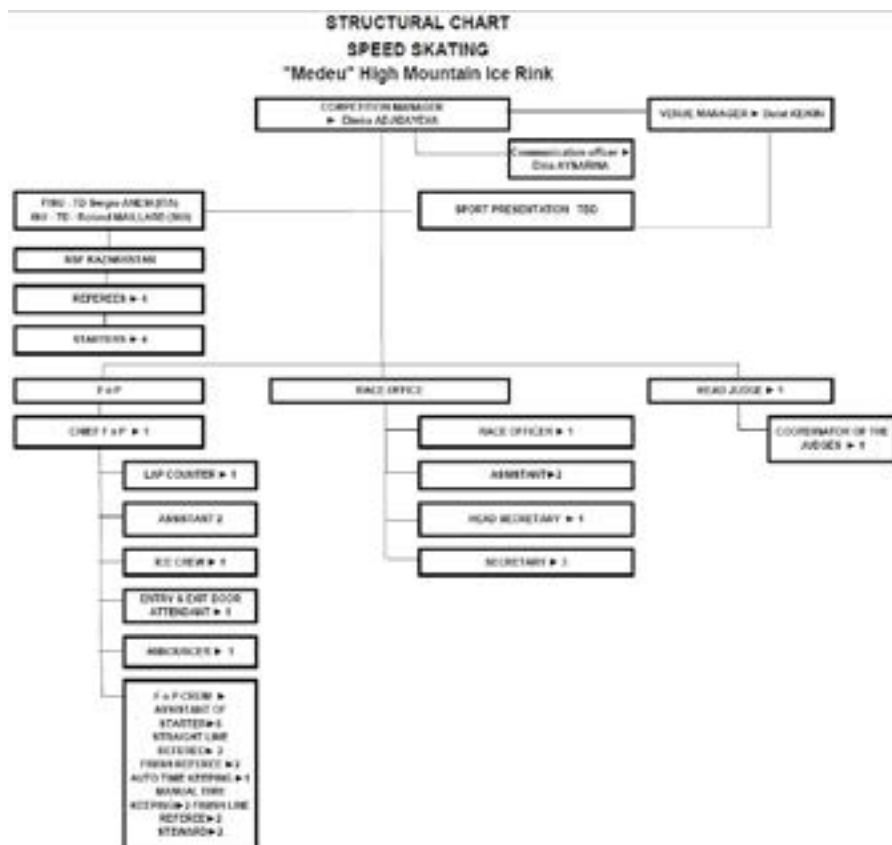
|                         |   |
|-------------------------|---|
| FISU Technical Delegate | Sergio ANESI (ITA)  |
| ISU Technical Delegate  | Roland MAILLARD (SUI)   |
| Competition Manager     | Elmira ADJIBAYEVA (KAZ)   |
| Additional Experts      | To be nominated at the 1 <sup>st</sup> General Technical Meeting, if needed |

### 5.2. INTERNATIONAL TECHNICAL OFFICIALS

|                         |                       |
|-------------------------|-----------------------|
| Referee Men             | Erik ØSMUNDSET (NOR)  |
| Assistant Referee Men   | Daniel CABELDUC (SWE) |
| Referee Women           | Ivan DYAKOV (RUS)     |
| Assistant Referee Women | Berri DE JONGE (NED)  |
| Starter                 | Ake FALK (SWE)        |
| Starter                 | Sergey AVDEYEV (KAZ)  |
| Starter                 | Evgeny BOYARSKY (RUS) |



## 5.3. SPEED SKATING STRUCTURAL CHART





## 5.4. TECHNICAL REGULATIONS

The events will be organised in accordance with the most recent technical regulations of the International Skating Union (ISU), except when specifically amended with the WU 2017 Regulations.

The programme includes the following events:

| Men  | Women  |
|--|--|
| 500m   | 500m   |
| 1'000m   | 1'000m   |
| 1'500m   | 1'500m   |
| 5'000m   | 3'000m   |
| 10'000m  | 5'000m   |
| Mass-start   | Mass-start   |
| Team pursuit races over 8 laps for national teams of 3 skaters | Team pursuit races over 6 laps for national teams of 3 skaters |

The 500m for Ladies and Men will be skated twice. The classification will be based on the total time of the 2 races (see also ISU Rule 265, paragraph 1b). Each country may enter a maximum of twenty-four (24) competitors (twelve (12) men and twelve (12) ladies).

Each country may enter:

**Men:** Five (5) athletes for each distance, but no more than four (4) of these may start in the 500m, 1000m and 1500m, and no more than three (3) in the 5000m and 10000m. For the mass start events, two (2) skaters. If necessary, the number of competitors may be reduced. The total number of competitors from any country shall not exceed twelve (12).

**Ladies:** Five (5) athletes for each distance, but not more than four (4) of these may start in the 500m, 1000m, 1500m, and no more than three (3) in the 3000m and 5000m. For the mass start events, two (2) skaters. If necessary the number of competitors from any country may be reduced. The total number of competitors shall not exceed twelve (12).

For the 3000m ladies and the 5000m men, a maximum of thirty-two (32) skaters will be permitted in each event.

For the 5000m ladies and the 10000m men, a maximum of sixteen (16) skaters will be permitted in each event.

For the team pursuit event, a maximum of eight (8) national teams (men and ladies) shall be authorised to take part in the competition (four (4) skaters in each team, three (3) of whom may skate). The qualification of the teams will be based on the ranks of the second best skater of the country concerned in the 3000m for women and the 5000m for men, respectively.

At the first General Technical Meeting, the Head of Delegation or his representative shall confirm and sign the official list of competitors.

Only accredited athletes can be considered for the draw of a starting list.

## **Final Distances Entries:**

The deadline for the final distances entries is always the day before the competition at 10.00 a.m. at the race office.

The deadline to deliver the first Final Distance Entry for W 1.500m and M 5.000m is 30.1.2017 time 10.00am in the Speed Skating Competition Office, located at the Ice Stadium in Almaty. The first Competition day is 31.1.2017

The Day by Day Schedule, with daily information and deadlines, will be presented to all team leaders.

Countries having skaters among the 16 best placed skaters in the 3.000m for Women and the

5.000m for Men in the same Universiade, have the right to enter a corresponding number of skaters, with the following exceptions:

- a. A country may enter at least as many skaters (max. 3) as the number of skaters from the country among the 8 best in the mentioned personal best-times for this long distance (5.000m W – 10.000m M). Such entries would then replace entries based on the last qualifying position on the shorter long distance in the same Universiade (3.000m W and 5.000m M).
- b. If some countries do not enter their qualified number of skaters additional entries will be allowed, based on the final classification in 3.000m Women and 5.000m Men, until a number of 16 competitors is reached in each event.

### **5.4.1. PROTEST AND APPEAL**

In accordance to General Regulations:

Rule 123. Protests based on alleged violation of Rules may be lodged provided that they are not forbidden by this or another Rule. The Referee decides upon all protests. Protests must be filed with the Referee in writing and within the stated time limit. At the same time 100 Swiss Francs or other convertible currency to the same value must be deposited with the Referee.

Each Head of Delegation or his/her deputy is authorised to lodge an appeal against the decision of the Referee. This appeal must be submitted in writing to the Jury of Appeal or competent authority in accordance with the regulations of ISU.

Any decision of the Jury of Appeal or equivalent authority of a sport is final and must be reported immediately to the Head of Delegation of the country concerned.

Any sport disciplinary situation, which cannot be satisfactorily resolved by the sports technical committees and the sport-specific disciplinary regulations, will



be reported to the FISU Disciplinary Committee for further action to be taken. Where appropriate, a report will also be sent to ISU.

## **5.5. COMPETITION FORMAT**

### **5.5.1. 500 m (LADIES AND MEN)**

- All rules for WC competition
- Depends on number of entries
- The 500m for Ladies and Men will be skated twice. The classification will be based on the total time of the 2 races (see also ISU Rule 265, paragraph 1b).

### **5.5.2. 1000 m (LADIES AND MEN)**

- All rules for WC competition
- Depends on number of entries

### **5.5.3. 1500 m (LADIES AND MEN)**

- All rules for WC competition
- Depends on number of entries

### **5.5.4. 5000 m MEN**

- All rules for WC competition
- Maximum 32 skaters

### **5.5.5. 3000 m LADIES**

- All rules for WC competition
- Maximum 32 skaters

### **5.5.6. 10000 m MEN**

- All rules for WC competition
- Maximum 16 skaters

### **5.5.7. 5000 m LADIES**

- All rules for WC competition
- Maximum 16 skaters

### **5.5.8. MASS START LADIES/MEN**

- Mass start races are over 16 laps; both for Ladies and for Men
- Max. 2 skaters/country

### **5.5.9. TEAM PURSUIT LADIES**

- For Ladies the Team Pursuit races are over 6 laps
- Team Pursuit will be organized with 2 teams racing at the same time
- For the team pursuit event, a maximum of eight (8) national teams shall

be authorized to take part in the competition (four (4) skaters in each team, three (3) of whom may skate). The qualification of the teams will be based on the ranks of the second best skater of the country concerned in the 3000m for women and the 5000m for men, respectively.

### 5.5.10. TEAM PURSUIT /MEN

- For Men the Team Pursuit races are over 8 laps
- Team Pursuit will be organized with 2 team racing at the same time
- For the team pursuit event, a maximum of eight (8) national teams shall be authorized to take part in the competition (four (4) skaters in each team, three (3) of whom may skate). The qualification of the teams will be based on the ranks of the second best skater of the country concerned in the 3000m for women and the 5000m for men, respectively.

## 5.6. COMPETITION AND TRAINING VENUE INFORMATION

|                  |              |
|------------------|--------------|
| OC Venue Manager | Dulat KEIKIN |
|------------------|--------------|

| Venue                          | Function                 | Location   | Distance to AV |
|--------------------------------|--------------------------|--|----------------|
| «Medeu» High Mountain Ice Rink | Training/<br>Competition | Almaty, Gornaya street ,465<br>43.157591 77.058978 | 30.6km/40min   |

The «Medeu» is an outdoor ice rink. It is located in a mountain valley (Medeu Valley, or the valley of Malaya Alma-Atinka River) on the south-eastern outskirts of Almaty, Kazakhstan. Medeu sits 1,691 meters above sea level, making it as one of the highest ice rink in the world. It has 10.5 thousand square meters of ice and utilizes a sophisticated freezing and watering system to ensure the quality of the ice. Construction of the stadium began in the fall of 1949, and the first competition took place at the stadium on February 4, 1951. Medeu switched to its current system of artificial ice in 1972. Medeu is one of the most favourite places of rest of local citizens of Almaty. Medeu is an artificially frozen outdoor ice rink. It has a standard speed skating track of 400 meters to the lap. The radius of the inner and outer competition lanes are 25,5 meters and 29,5 meters, respectively. The width of each lane of the competition track is 4 meters and there is an inside training lane with a width of 5 meters. The «Medeu» High-Mountain Skating rink is 10500m<sup>2</sup>.





## 5.7. SPEED SKATING COMPETITION SCHEDULE

| Date   | Day | Time          | Event                | Venue                          |
|--------|-----|---------------|----------------------|--------------------------------|
| Jan.31 | Tue | 11:00 – 12:35 | 1500m W              | «Medeu» High Mountain Ice Rink |
|        |     | 13:00 – 15:45 | 5000m M              |                                |
| Feb. 1 | Wed | 11:00 – 12:45 | 3000m W              |                                |
|        |     | 13:00 – 14:05 | 500m M               |                                |
| Feb. 2 | Thu | 11:00 – 12:50 | 500m W               |                                |
|        |     | 13:00 – 14:35 | 1500m M              |                                |
| Feb. 3 | Fri | 11:00 – 12:30 | 5000m W              |                                |
|        |     | 13:00 – 14:15 | 1000m M              |                                |
| Feb. 4 | Sat | 11:00 - 12:15 | 1000m W              |                                |
|        |     | 13:00 – 15:40 | 10000m M             |                                |
| Feb. 5 | Sun | 11:00 – 11:50 | Team Pursuit W (1-5) |                                |
|        |     | 13:00 – 13:55 | Team Pursuit M (1-6) |                                |
| Feb. 6 | Mon | 11:00 – 11:30 | Mass Start W         |                                |
|        |     | 13:00 – 13:30 | Mass Start M         |                                |

## 5.8. TRAINING SCHEDULE

### 5.8.1. UNOFFICIAL TRAININGS

| Date    | Day | Time          | Event               | Venue                          |
|---------|-----|---------------|---------------------|--------------------------------|
| Jan. 28 | Sat | 09:00 – 13:00 | Unofficial Training | «Medeu» High Mountain Ice Rink |
|         |     | 14:30 – 17:30 |                     |                                |



## 5.8.2. OFFICIAL TRAININGS

| Date    | Day | Time          | Event   | Venue                          |
|---------|-----|---------------|---|--------------------------------|
| Jan. 29 | Sun | 09:00 – 13:00 | Official Training M/W                                 | «Medeu» High Mountain Ice Rink |
| Jan. 30 | Mon | 09:00 – 13:00 | Official Training M/W                                 |                                |
|         |     | 14:30 – 17:30 | Official Training M/W                                 |                                |
| Jan. 31 | Tue | 09:00 – 10:45 | Official Training M/W for athletes competing this day |                                |
|         |     | 16:00 – 17:30 | Official Training M/W for athletes competing next day |                                |
| Feb. 1  | Wed | 09:00 – 10:45 | Official Training M/W for athletes competing this day |                                |
|         |     | 16:00 – 17:30 | Official Training M/W for athletes competing next day |                                |
| Feb. 2  | Thu | 09:00 – 10:45 | Official Training M/W for athletes competing this day |                                |
|         |     | 16:00 – 17:30 | Official Training M/W for athletes competing next day |                                |
| Feb. 3  | Fri | 09:00 – 10:45 | Official Training M/W for athletes competing this day |                                |
|         |     | 16:00 – 17:30 | Official Training M/W for athletes competing next day |                                |
| Feb. 4  | Sat | 09:00 – 10:45 | Official Training M/W for athletes competing this day |                                |
|         |     | 16:00 – 17:30 | Official Training M/W for athletes competing next day |                                |
| Feb. 5  | Sun | 09:00 – 10:45 | Official Training M/W for athletes competing this day |                                |
|         |     | 16:00 – 17:30 | Official Training M/W for athletes competing next day |                                |
| Feb. 6  | Mon | 09:00 – 10:45 | Official Training M/W                                 |                                |

## 5.9. TECHNICAL MEETINGS

| Date    | Day | Time          | Event                                       | Venue |
|---------|-----|---------------|---|-------|
| Jan. 30 | Mon | 16:00 – 17:00 | 1 <sup>st</sup> Team Captains Meeting (GTM) |       |
|         |     | 17:00 – 18:00 | Opening Draw                                |       |
| Jan. 31 | Tue | 16:00 – 17:30 | TCM and Draw                                |       |
| Feb. 1  | Wed | 15:15 – 16:45 |   |       |
| Feb. 2  | Thu | 14:45 – 16:15 |   |       |
| Feb. 3  | Fri | 14:30 – 16:00 |   |       |
| Feb. 4  | Sat | 15:45 – 17:15 |   |       |
| Feb. 5  | Sun | 14:00 – 15:30 |   |       |
| Feb. 6  | Mon | 13:45 – 15:15 | TCM   |       |

## 5.10. EQUIPMENT

The purpose of the Special Regulations and Technical Rules for Speed Skating is to regulate all aspects of materials relating to Speed Skating competitions. It is based on the binding nature of the Special Regulations and Technical Rules for Speed Skating and is part of those rules.

All equipment used by Athletes is governed by the Special Regulations and Technical Rules for Speed Skating which can be found on the following website: [www.isu.org](http://www.isu.org).

## 5.11. DOPING CONTROL

### 5.11.1. DOPING CONTROL

Doping control will be carried out in accordance with the rules and regulations of FISU.

### 5.11.2. LIST OF PROHIBITED SUBSTANCES

The actual list of prohibited substances and treatment is defined in accordance with WADA international standards. NUSF will be responsible for ensuring that their delegations, namely athletes, are made aware of this prohibited list. Ignorance of the prohibited list will in no way constitute a valid excuse for any participant of the WU violating valid anti-doping rules. For the WADA list of prohibited substances, please refer to the following website: [www.wada-ama.org](http://www.wada-ama.org).



### **5.11.3. TESTING**

In accordance with the preliminary Test Distribution Plan elaborated by the FISU International Medical Committee (FISU CMI), the required number of urine and blood tests will be collected both during and out of competition. Athletes may be tested at any time during the period of their accreditation. Urine and blood tests in and outside competition will be performed by the doping control officers licensed by Kazakhstan National Anti-Doping Centre under the supervision of the FISU CMI.

All test results will be sent to the confidential email address of Chairman of the FISU International Medical Committee (FISU CMI) as well put into ADAMS. The FISU CMI will bear the responsibility for the result management in the case of a violation of the Anti-doping rules.

### **5.11.4. DOPING CONTROL STATIONS**

Athletes must have their accreditation badges with them at all times in the Doping Control Stations.

Doping Control Station for Speed Skating athletes will be allocated at the «Medeu» High Mountain Ice Rink 2<sup>nd</sup> floor (East Stands) (refer to Appendix 7.2).

### **5.11.5. THERAPEUTIC USE EXEMPTION (TUE)**

Athletes taking part in the WU requiring a TUE must apply to the appropriate Anti-doping Organisation as soon as possible. International Standards for TUE will be applied. Should prohibited substances or methods be used after the opening of the WU, applications for emergency TUE should be made to the TUE Committee of FISU.

### **5.11.6. EMERGENCY TREATMENT**

In the case of an emergency, if an athlete has to use prohibited substances or methods during the WU, team doctors will be responsible for completing the TUE form and without any delay submit it to the FISU CMI.

### **5.11.7. CONTACT DETAILS**

Should any further information be required, please contact:

Dr. Raushan Akhanova, Head of the Department of Medical Services and Doping Control: r.akhanova@almaty2017.kz

## **5.12. AWARDS & MEDALS**

### **5.12.1. FLOWER CEREMONY**

Flower Ceremony will take place at the end of the concerned distance of Speed Skating competition on the «Medeu» High Mountain Ice Rink.

### 5.12.1. MEDAL-AWARDING CEREMONY

The Medal-Awarding Ceremonies will take place accordingly to the following schedule:

| Date   | Day | Time  | Medal-Awarding Ceremony | Venue       |
|--------|-----|-------|-------------------------|-------------|
| Jan.31 | Tue | 20:00 | 1500m W/ 5000m M        | Medal Plaza |
| Feb. 1 | Wed |       | 3000m W/ 500m M         |             |
| Feb. 2 | Thu |       | 500m W/ 1500m M         |             |
| Feb. 3 | Fri |       | 5000m W/ 1000m M        |             |
| Feb. 4 | Sat |       | 1000m W/ 10000m M       |             |
| Feb. 5 | Sun |       | Team Pursuit W/ M       |             |
| Feb. 6 | Mon |       | Mass Start W/ M         |             |

The OC will inform the Head of delegation, the team officials and the athletes about the time, location and procedure. The medallists are expected to be in the medal awarding preparation and waiting area 30 minutes prior to the ceremony. In case of a no show of a medallist, the medals and mascots maybe delivered to an official of the relevant delegation. The official must wear the uniform of the delegation to take part in the ceremony. S/he must not mount the podium but walk in front of it and take the medal and mascot in his/her hands. All flags will be raised.

During the Medal-Awarding Ceremony:

- The athletes are not allowed to bring national flags or any other items on the podium and are expected to take their caps off.
- The athletes must wear their delegation's approved uniform or the uniform with which they competed if the ceremony takes place right after the end of the competition and at the same venue.
- During the playing of the FISU anthem and the raising of the flags, they shall face the flags and conduct themselves in a dignified manner all the times. No national anthem is played during the ceremony.
- The detailed rules of this procedure will be in accordance with the rules of FISU.

### 5.12.2. DIPLOMA OF HONOURS

- The athletes ranked one (1) to eight (8) will receive a Diploma of Honours.
- For team events, each team member will receive a personal diploma of honour mentioning his/her name and the team ranking.
- Diplomas of participation and of honour are not distributed to winners at the Medal-Awarding ceremony. They are handed to the Head of Delegation or an appointed representative of each delegation in the Athletes' Village at a later time.



### 5.13. PRESS INTERVIEWS

Sub-press Centres are set up in the main/finals competition venues to facilitate interviews and reports by the accredited media. After the competitions, all athletes must exit the Field of Play through the Mixed Zone, and brief interviews are conducted in the Mixed Zone. Coaches and winning athletes/teams take part in press conferences after the Flower Ceremonies at the venue on request of the press manager. During the press conference, interpretation will be provided in the official language (English) and RUS/KAZ languages. If one does not speak the official language, such person should bring his/her own interpreter of the language to the press conferences.

### 5.14. SPORT INFORMATION SERVICES

#### 5.14.1. ON-LINE SPORTS INFORMATION SERVICE

|                   |  |
|-------------------|--|
| Internet address: | <a href="http://www.almaty2017.com">www.almaty2017.com</a> |
|-------------------|--|

#### 5.14.2. SPORT INFORMATION AT THE VENUE

The SID will be located at each venue, will distribute most recent information related to the competitions to the SID and receive requests from the team representative(s).

#### 5.14.3. SPORTS INFORMATION AT ATHLETES VILLAGE (AV)

Sports information desks for all 12 sports will be located in the SIC at the AV, the SIC will receive the most updated sports information. Any official and/or urgent notice from each competition headquarter will be announced immediately.

#### 5.14.4. OPERATION INFORMATION

| Function              | Location                              | Operating Period     | Operating Hours                               |
|-----------------------|---------------------------------------|----------------------|---|
| On-line Service       | Website                               |                      |   |
| AV SIC                | 1 <sup>st</sup> Floor of Pyramid zone | 24 Jan – 10 Feb 2017 | 07:00 – 23:00                                 |
| Competition Venue SID | «Medeu» High Mountain Ice Rink        | 27 Jan – 8 Feb 2017  | Accordingly training and competition schedule |

## 5.14.5. LIST OF SPORT INFORMATION BY LOCATION

| Contents  | Online | Venue SID | AV SIC | ITO Hotel |
|---|--------|-----------|--------|-----------|
| Competition Schedule                                    | X      | X         | X      | X         |
| Training Schedule and booking info                      |        | X         | X      | X         |
| Start lists   | X      | X         | X      | X         |
| Change to Schedules                                     | X      | X         | X      | X         |
| Competition Results                                     | X      | X         | X      | X         |
| Special announcements and urgent notice                 |        | X         | X      | X         |
| Medal Table   | X      |           |        |           |
| Technical Handbooks                                     | X      |           | X      | X         |
| Regulations for the WU2017                              | X      |           |        |           |
| Daily Sport Bulletin                                    | X      |           |        |           |
| Non sport information (transport, weather service etc.) |        | X         | X-MIC  | X         |
| Answer and follow up to teams questions                 |        | X         | X      | X         |



## 6. SERVICE INFORMATION

### 6.1. ACCREDITATION

**Location of the Main Accreditation Centre:** Almaty, Alatau district, Momyshtuly avenue, Northern Ryskulova street. At the AV (Refer to Athletes' Village Map).

**Important:** No athlete will be allowed to attend official training or competition without the Accreditation Card. Temporary cards do not allow athletes to take part to official trainings and competitions.

### 6.2. TRANSPORTATION

#### 6.2.1. GENERAL TRANSPORTATION SYSTEM

The OC guarantees the transportation of every one that is accredited. The Transportation Committee has established the necessary organization to plan the transportation needs of WU from the day of the opening of the AV (24 January).

#### 6.3.2. COMPETITION & TRAINING TRANSPORTATION

Route TA 2 «Athletes' Village – Medeu High Mountain Ice Rink – Athletes' Village»  
Distance between the Athletes' Village and the Medeu High Mountain Ice Rink – 30.6 km

Travel time between the Athletes' Village and the Medeu High Mountain Ice Rink – 40 min

Transport type - city bus

#### Transportation schedule for Speed Skating

| Date          | Departure from the Athletes' Village                                 | Departure from Medeo   | Number of transport |
|---------------|--|--|---------------------|
| Jan 25<br>Wed |  |  |                     |
| Jan 26<br>Thu | 07:45<br>09:15<br>13:45<br>15:15                                     | 11:00<br>12:30<br>17:00<br>18:30                                     | 8                   |
| Jan 27<br>Fri |  |  |                     |
| Jan 28<br>Sat | 07:15<br>07:30<br>09:15<br>09:30<br>12:45<br>13:00<br>14:30<br>14:45 | 10:30<br>11:30<br>12:30<br>13:30<br>16:00<br>16:30<br>17:30<br>18:00 | 8                   |
| Jan 29<br>Sun | 07:15<br>07:30<br>09:15<br>09:30                                     | 10:30<br>11:30<br>12:30<br>13:30                                     | 8                   |



|               |  |  |   |
|---------------|--|--|---|
| Jan 30<br>Mon | 07:15<br>07:30<br>09:15<br>09:30<br>12:45<br>13:00<br>14:30<br>14:45 | 10:30<br>11:30<br>12:30<br>13:30<br>16:00<br>16:30<br>17:30<br>18:00 | 8 |
| Jan 31<br>Tue |  |  | 8 |
| Feb 1<br>Wed  |  |  |   |
| Feb 2<br>Thu  |  |  |   |
| Feb 3<br>Fri  |  |  |   |
| Feb 4<br>Sat  |  |  |   |
| Feb 5<br>Sun  |  |  |   |
| Feb 6<br>Mon  |  |  |   |

### 6.3.3. TRANSPORTATION FOR MEDAL-AWARDING CEREMONIES

Awarding Ceremonies will be held every day at 20.00. Thus, the Transportation Department prepared a specific transportation plan for transferring athletes to the Medal Plaza. All winners will be transported to the Medal plaza by special reserved minibuses.

- TA 16 "Athletes Village – Medal Plaza – Athletes' Village"
- Travel time between the Athletes' Village and the Medal Plaza – 36 min.
- Transport type – minibuses.

If the competition finishes late, winners will be transported directly to the Medal Plaza by separate reserved minibuses from the venue.

For the transportation schedule for the medal awarding ceremonies please refer to the transportation manual.



## **6.4. MEDICAL SERVICES**

### **6.4.1. GENERAL OVERVIEW**

The OC provides accredited persons with free and adequate medical care. This medical care includes all appropriate emergency care, diagnosis and treatment of all injuries and illnesses directly and indirectly related to the WU, and this obligation will begin from the day of the opening of the AV until two (2) days following the closing ceremony. This will not cover medical care while in country if the credential person has already officially left the AV or officially left the host country.

All WU participants must have own medical insurance. Only emergency medical care for WU accredited participants will be covered by the OC.

- The working hours of the Medical Center at the AV will be daily available starting from 6:00 am till 24:00 pm.
- The Pharmacy at the AV will be round-the-clock.

## **7. OC CONTACTS**

### **Sport Competitions Department**

sports@almaty2017.kz



## 8. APPENDICES

### 8.1. 28<sup>TH</sup> WINTER UNIVERSIADE 2017 COMPETITION SCHEDULE - VERSION 06.01.2017



#### ALMATY 2017 WINTER UNIVERSIADE - COMPETITION SCHEDULE

29 JANUARY - 8 FEBRUARY 2017



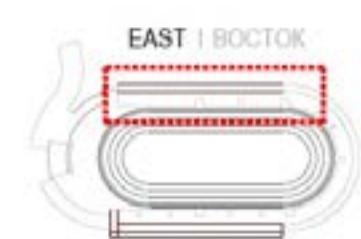
|   | SATURDAY<br>January - 28  | SUNDAY<br>January - 29  | MONDAY<br>January - 30  | TUESDAY<br>January - 31  | WEDNESDAY<br>February - 1  | THURSDAY<br>February - 2  | FRIDAY<br>February - 3  | SATURDAY<br>February - 4   | SUNDAY<br>February - 5  | MONDAY<br>February - 6  | TUESDAY<br>February - 7  | WEDNESDAY<br>February - 8   | Medal<br>Awardings |
|---|---|---|---|--|--|---|---|--|---|---|--|---|--------------------|
| <b>CEREMONIES</b><br>«Almaty Arena»: Figure Skating Arena                         |   | 19:00 Opening Ceremony  |   |  |  |   |   |  |   |   |  | 19:00 Closing Ceremony  |                    |
| <b>ICE SPORTS</b>   |   |   |   |  |  |   |   |  |   |   |  |   |                    |
| <b>FIGURE SKATING</b><br>«Almaty Arena»: Figure Skating                           |   |   | Unofficial Practice   | Official Practice  | Ladies<br>14:30 Short Program  | Ice Dance<br>14:30 Short Dance<br>Ladies<br>17:00 Free Skating  | Men<br>14:50 Short Programme  | Ice Dance<br>14:00 Free Dance<br>Men<br>17:00 Free Skating   | Exhibition<br>17:00 EXH   |   |  |   | 3 0 3              |
| <b>CURLING</b><br>«Almaty Arena»: Curling   |   | Official Practice M/W   | 09:00 w1<br>14:00 M1<br>19:00 w2  | 09:00 M2<br>14:00 w3<br>19:00 M3   | 09:00 w4<br>14:00 M4<br>19:00 w5   | 09:00 M5<br>14:00 w6<br>19:00 M6  | 09:00 w7<br>14:00 M7<br>19:00 w8  | 09:00 M8<br>14:00 w9<br>19:00 M9   | 09:00/14:00/19:00 Tie Breaker games if required   | 09:00 Semi Finals M/W<br>16:00 Bronze Medal Game M/W  | 09:00 W Gold Medal Game<br>14:00 M Gold Medal Game   |   | 2 0 2              |
| <b>ICE HOCKEY Men</b><br>«Halyk Arena»  | 12:30 SVK - GBR (1)<br>16:00 JPN - LAT (2)<br>19:30 KAZ - CHN (3) |   | 12:30 KOR - RUS (4)<br>16:00 SWE - CZE (5)<br>19:30 USA - CAN (6)   | 12:30 JPN - KOR (7)<br>16:00 SVK - USA (8)<br>19:30 KAZ - SWE (9)  | 12:30 RUS - LAT (10)<br>16:00 CAN - GBR (11)<br>19:30 CZE - CHN (12)   | 12:30 GBR - USA (13)<br>16:00 LAT - KOR (14)<br>19:30 CHN - SWE (15)  | 12:30 CAN - SVK (16)<br>16:00 RUS - JPN (17)<br>19:30 CZE - KAZ (18)  | 12:30 D9 - D12 (19)<br>16:00 QF#1 (20)<br>19:30 QF#2 (21)  | 12:30 D10 - D11 (22)<br>16:00 QF#3 (23)<br>19:30 QF#4 (24)  | 09:00 L#19 - L#22 (25)<br>12:30 W#19 - W#22 (26)<br>16:00 LQF#1 - LQF#4 (27)<br>19:30 LQF#2 - LQF#3 (28)  | 09:00 L#27 - L#28 (29)<br>12:30 W#27 - W#28 (30)<br>16:00 SF#1 (31)<br>19:30 SF#2 (32)   | 11:00 BRONZE (33)<br>15:00 GOLD (34)  | 1 0 1              |
| <b>ICE HOCKEY Women</b><br>«Baltan Sholaks»: Ice Hockey Arena                     | 16:30 CAN - CHN (1)<br>20:00 KAZ - GBR (2)                        | 12:30 USA - RUS (3)   | 16:30 CAN - GBR (4)<br>20:00 CHN - KAZ (5)  | 20:00 JPN - USA (6)  | 16:30 GBR - CHN (7)<br>20:00 KAZ - CAN (8)   | 20:00 RUS - JPN (9)   | 20:00 RL D6 - D5 (10)   | 16:30 SF#1 (11)<br>20:00 SF#2 (12)   | 13:00 RL D7 - D6 (13)   | 13:00 RL D5-D7 (14)<br>16:30 BRONZE (15)<br>20:00 GOLD (16)   |  |   | 1 0 1              |
| <b>SHORT TRACK</b><br>«Baltan Sholaks»: Short Track Arena                         |   |   |   |  |  |   | Unofficial Training<br>09:00-20:00  | Official Training<br>09:00-20:00   | 14:00 1500m W/M<br>17:00 Heats 3000m Relay W<br>Heats 5000m Relay M                                     | 14:00 500m W/M<br>17:50 SF 3000m Relay W<br>SF 5000m Relay M  | 14:00 1000m W/M<br>18:00 F 3000m Relay W<br>F 5000m Relay M  |   | 8 0 8              |
| <b>SPEED SKATING</b><br>«Medeu» High-Mountain Ice Rink                            | Unofficial Training<br>09:00 - 13:00<br>14:30 - 17:30             | Official Training<br>09:00 - 13:00  | Official Training<br>09:00 - 13:00<br>14:30 - 17:30   | 09:00-10:45 Official Training<br>11:00 1'500m W<br>13:00 5'000m M  | 09:00-10:45 Official Training<br>11:00 3'000m W<br>13:00 5'000m M  | 09:00-10:45 Official Training<br>11:00 500m W<br>13:00 5'000m M   | 09:00-10:45 Official Training<br>11:00 5'000m W<br>13:00 10'000m M  | 09:00-10:45 Official Training<br>11:00 1'000m W<br>13:00 10'000m M   | 09:00-10:45 Official Training<br>11:00 Team Pursuit W<br>13:00 Team Pursuit M                           | 09:00-10:45 Official Training<br>11:00 Mass Start W<br>13:00 Mass Start M   |  |   | 0 14 14            |
| <b>SNOW SPORTS</b>  |   |   |   |  |  |   |   |  |   |   |  |   |                    |
| <b>ALPINE SKIING</b><br>«Shymbulak» Ski Resort                                    |   | 10:00-12:00 Official Free Skiing on Super-G course  | Super-G W/M<br>10:30 Super-G W<br>13:00 Super-G M   | Alpine Combined W<br>10:00 AC - SG<br>13:30 AC - SL  | Alpine Combined M<br>10:00 AC - SG<br>13:30 AC - SL  | Reserve Day   | Giant Slalom W<br>10:00 1 <sup>st</sup> run<br>13:00 2 <sup>nd</sup> run  | Giant Slalom M<br>10:00 1 <sup>st</sup> run<br>13:00 2 <sup>nd</sup> run   | Parallel Nations Team Event<br>10:00  | Slalom W<br>10:00 1 <sup>st</sup> run<br>13:00 2 <sup>nd</sup> run  | Slalom M<br>10:00 1 <sup>st</sup> run<br>13:00 2 <sup>nd</sup> run   | Reserve day   | 0 9 9              |
| <b>FREESTYLE SKIING</b><br>«Shymbulak» Ski Resort                                 |   | «Tabagan» Ski Resort<br>Aerials M/W<br>10:00 - 13:00 Official Training                              | «Tabagan» Ski Resort<br>Aerials W/M<br>10:00 - 11:15 Training<br>11:30 Qualification<br>13:00-13:45 Training<br>14:00 Finals  | «Tabagan» Ski Resort<br>Mixed Teams Aerials<br>10:00 - 11:15 Training<br>11:30 Qualification<br>13:00-13:45 Training<br>14:00 Finals       | «Shymbulak» Ski Resort<br>Moguls W/M<br>09:00 - 12:00 Training   | «Shymbulak» Ski Resort<br>Moguls W/M<br>09:00 - 12:00 Training<br>10:30 Qualification<br>13:00 Finals   | «Shymbulak» Ski Resort<br>Dual Moguls W/M<br>09:00 - 10:30 Training<br>10:30 Qualification<br>14:00 Finals                  | Reserve Day  | «Shymbulak» Ski Resort<br>Ski Cross W/M<br>11:00 - 14:00 Training                                       | «Shymbulak» Ski Resort<br>Ski Cross W/M<br>09:00 - 10:00 Training<br>11:00 Qualification  | «Shymbulak» Ski Resort<br>Ski Cross W/M<br>12:00 - 13:30 Training<br>14:00 Finals  | Reserve Day   | 0 9 9              |
| <b>SNOWBOARD</b><br>«Shymbulak» Ski Resort  |   | «Shymbulak» Ski Resort<br>Parallel Giant Slalom W/M<br>Parallel Slalom W/M<br>Unofficial Training   | «Shymbulak» Ski Resort<br>Parallel Giant Slalom W/M<br>09:00 Qualification<br>14:00 Finals  | «Shymbulak» Ski Resort<br>Parallel Slalom W/M<br>09:00 Qualification<br>14:00 Finals<br>Snowboard Cross W/M<br>10:00-13:00 Training        | «Shymbulak» Ski Resort<br>Snowboard Cross W/M<br>08:45 - 09:45 Training<br>10:00 Qualification               | «Shymbulak» Ski Resort<br>Snowboard Cross W/M<br>12:45 - 13:45 Training<br>14:00 Finals   | Reserve Day   | «Shymbulak» Ski Resort<br>Slopestyle W/M<br>10:00-13:00 Training   | «Shymbulak» Ski Resort<br>Slopestyle W/M<br>09:00-09:45 Training<br>10:00 Qualification<br>13:00 Finals | «Tabagan» Ski Resort<br>Big Air W/M<br>10:00-13:00 Training   | «Tabagan» Ski Resort<br>Big Air W/M<br>10:00-13:00 Training<br>11:00 Qualification<br>13:00-13:45 Training<br>14:00 Finals                   | Reserve Day   | 0 10 10            |
| <b>BIATHLON</b><br>«Alatau» Cross - Country Skiing & Biathlon Complex             |   | Unofficial Training<br>10:30 - 12:00 W<br>12:15 - 13:45 M   | Official Training<br>11:00 - 13:00 W<br>13:15 - 15:15 M   | Individual M/W<br>10:15 - 11:05 Zeroing W<br>11:15 - 12:55 Individual 15km W<br>13:15 - 14:05 Zeroing M<br>14:15 - 16:00 Individual 20km M | Official Training Sprint<br>11:00 - 13:00 W<br>13:15 - 15:15 M   | Sprint M/W<br>09:30 - 10:20 Zeroing W<br>10:30 - 12:00 Sprint 7.5km W<br>12:15 - 13:05 Zeroing M<br>13:15 - 14:45 Sprint 10km M                 | Pursuit M/W<br>11:00-11:45 Zeroing W<br>12:00-12:50 Pursuit 10km W<br>13:00-13:45 Zeroing M<br>14:00-14:50 Pursuit 12.5km M | Official Training<br>Mixed Relay<br>11:00-13:00<br>Unofficial Training<br>13:15-14:15  | Mixed Relay<br>2x4km W + 2x7.5km M<br>11:00-11:45 Zeroing<br>12:00-13:30 Mixed Relay                    | Official Training Mass Start<br>11:00 - 13:00 W<br>13:15 - 15:15 M  | Mass Start M/W<br>11:15 - 11:45 Zeroing W<br>12:00 - 12:45 Mass Start 12.5km W<br>14:15 - 14:45 Zeroing M<br>15:00 - 15:45 Mass Start 15km M | Reserve day   | 0 9 9              |
| <b>CROSS-COUNTRY SKIING</b><br>«Alatau» Cross - Country Skiing & Biathlon Complex | Unofficial Training W/M<br>09:00 - 16:00                          | Individual (C)<br>11:00 - 14:00 Official Training W/M   | Individual (C)<br>09:00-10:55 Official Training W<br>11:00-11:45 5km (C) W<br>11:45-12:25 Official Training M<br>12:30-13:45 10km (C) M<br>Pursuit (F)<br>15:00-16:30 Official Training M/W | Pursuit (F)<br>08:30-10:25 Official Training W<br>10:30 - 11:15 5km (F) W<br>11:15-12:55 Official Training M<br>13:00 - 14:15 10km (F) M   | Sprint (C)<br>11:00-16:00 Official Training W/M  | Sprint (C)<br>10:30 - 12:25 Official Training<br>12:30 - 13:30 Qualification W/M<br>13:30 - 14:20 Official Training<br>14:45 - 16:20 Finals W/M | Mixed Team Sprint (F)<br>11:00 - 14:00 Official Training M/W  | Mixed Team Sprint (F)<br>09:00-10:55 Official Training<br>11:00-12:00 Qualifications<br>12:05-12:55 Official Training<br>13:00-13:30 Final | Relay W/M<br>11:00-14:00 Official Training  | Relay W/M<br>09:00-10:55 Official Training W<br>11:00-12:00 3x5km (C+FF) W<br>12:00-13:25 Official Training M<br>13:30-15:00 4x7.5km (CC+FF) M<br>Mass Start (C)<br>16:00-17:00 Official Training W | Mass Start (C)<br>11:30-13:25 Official Training W<br>13:30-15:00 15km (C) W<br>15:00-17:00 Official Training M                               | Mass Start (C)<br>08:00-09:55 Official Training M<br>10:00-12:00 30km (C) M | 1 10 11            |
| <b>NORDIC COMBINED</b><br>«Sunkam» Ski Resort                                     |   | 09:00-10:30 Unofficial Training Cross-Country 10km<br>14:00-15:00 Official Training Ski Jumping K95 | Official Training Individual Gundersen<br>10:00-11:30 Ski Jumping K95<br>15:00-17:00 Cross-Country 10 km  | Individual Gundersen<br>Trial Round K95<br>11:00 Ski Jumping K95<br>15:30 Cross-Country 10km   | Reserve Day  | Official Training<br>09:00 - 10:30 Cross-Country 10 km<br>14:00-15:30 Ski Jumping K95   | Mass Start<br>Cross-Country 10km<br>Trial Ski Jumping K95<br>15:30 Ski Jumping K95  | Official Training Team Gundersen<br>10:00 - 11:30 Ski Jumping K95<br>15:00-16:30 Cross-Country 3x5km                                       | Team Gundersen<br>Trial Ski Jumping K95<br>10:30 Ski Jumping K95<br>15:00 Cross-Country 3x5km           | Reserve Day   |  |   | 0 3 3              |
| <b>SKI JUMPING</b><br>«Sunkam» Ski Resort   |   |   | Official Training<br>17:00-18:00 K95 Women<br>18:30-20:00 K95 Men   | Official Training<br>17:00-18:00 K95 Women<br>18:30-20:00 K95 Men  | K95 Individual M/W<br>16:00 Trial Women<br>17:00 Individual Women<br>18:30 Trial Men<br>19:30 Individual Men | Reserve Day   | Official Training Team Competition/<br>Mixed Relay<br>17:00 - 18:00 K95 Women<br>18:00 - 19:30 K95 Men                      | K95 Mixed Relay<br>17:00 Trial Mixed Relay<br>18:00 K95 Mixed Relay  | K95 Team M/W<br>16:00 Trial Team Women<br>16:30 Team Women<br>18:00 Trial Team Men<br>19:00 Team Men    | Reserve Day   |  |   | 5 0 5              |
| <b>Medals Awardings</b>   | At the venue  | 0   | 0   | 0  | 0  | 2   | 1   | 0  | 3   | 4   | 3  | 2   | 21                 |
| At the Medal Plaza  | 0   | 0   | 8   | 11   | 3  | 10  | 8   | 4  | 7   | 5   | 8  | 0   | 64                 |
| In total  | 0   | 0   | 8   | 11   | 5  | 11  | 8   | 7  | 11  | 8   | 14   | 2   | 85                 |



## 8.2. VENUE LAYOUTS

### 8.2.1. 2<sup>ND</sup> FLOOR, 3<sup>RD</sup> FLOOR, 4<sup>TH</sup> FLOOR (EAST)

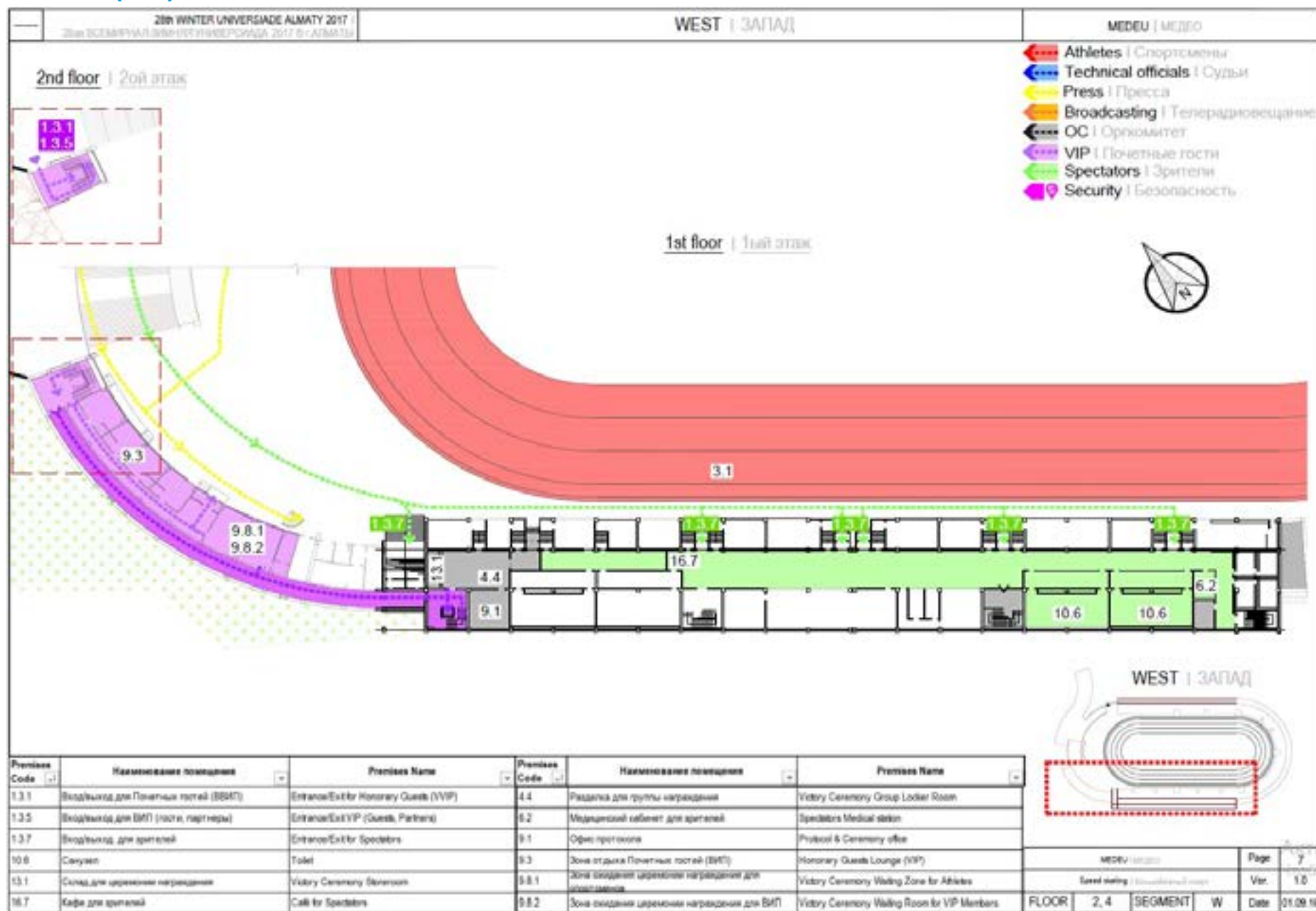




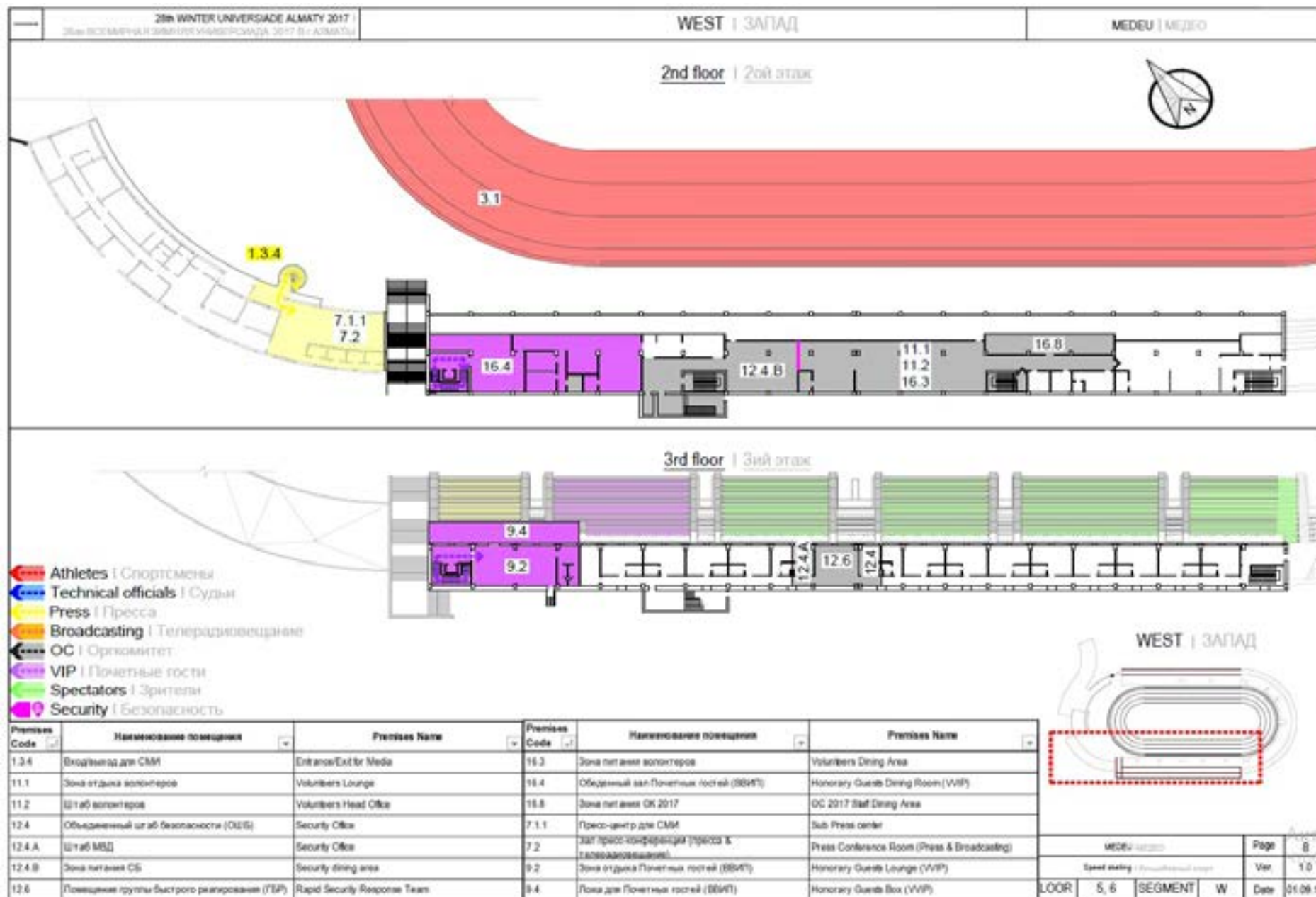
|  |      |         |   |      |          |
|--|------|---------|---|------|----------|
| Section 5.6.10                         |      |         |   | Page | 5        |
| Speed rating: 1.0 (maximum wind speed) |      |         |   | Ver. | 1.0      |
| FLOOR                                  | 5, 6 | SEGMENT | E | Date | 01.08.18 |



### 8.2.3. 1<sup>st</sup> FLOOR (WEST)



## 8.2.4. 2<sup>ND</sup> FLOOR, 3<sup>RD</sup> FLOOR (WEST)







## 8.3. DAY BY DAY SCHEDULE

|                          |
|--------------------------|
| Training                 |
| Competition              |
| Technical Meeting / Draw |
| Ceremony                 |

| Date       | Day | Start Time | Finish Time | Event Name                      | Venue                          |
|------------|-----|------------|-------------|---------------------------------|--------------------------------|
| 28.01.2017 | SAT | 9:00       | 13:00       | Unofficial Training             | "Medeu" High-Mountain Ice Rink |
|            |     | 14:30      | 17:30       | Unofficial Training             | "Medeu" High-Mountain Ice Rink |
| 29.01.2017 | SUN | 9:00       | 13:00       | Official Training M/W           | "Medeu" High-Mountain Ice Rink |
| 30.01.2017 | MON | 9:00       | 13:00       | Official Training M/W           | "Medeu" High-Mountain Ice Rink |
|            |     | 14:30      | 17:30       | Official Training M/W           | "Medeu" High-Mountain Ice Rink |
|            |     | 16:00      | 17:00       | 1st Team Captains Meeting (GTM) | "Medeu" High-Mountain Ice Rink |
|            |     | 17:00      | 18:00       | Draw                            | "Medeu" High-Mountain Ice Rink |
| 31.01.2017 | TUE | 9:00       | 10:45       | Official Training M/W           | "Medeu" High-Mountain Ice Rink |
|            |     | 11:00      | 12:35       | 1500m W                         | "Medeu" High-Mountain Ice Rink |
|            |     | 13:00      | 15:45       | 5000m M                         | "Medeu" High-Mountain Ice Rink |
|            |     | 16:00      | 17:30       | Team Captains Meeting and Draw  | "Medeu" High-Mountain Ice Rink |
|            |     | 16:00      | 17:30       | Official Training M/W           | "Medeu" High-Mountain Ice Rink |
|            |     | 20:00      |             | Medal-Awarding Ceremony         | Medal Plaza                    |
| 01.02.2017 | WED | 9:00       | 10:45       | Official Training M/W           | "Medeu" High-Mountain Ice Rink |
|            |     | 11:00      | 12:45       | 3000m W                         | "Medeu" High-Mountain Ice Rink |
|            |     | 13:00      | 15:00       | 500m M                          | "Medeu" High-Mountain Ice Rink |



|            |     |       |       |                                |                                |
|------------|-----|-------|-------|--------------------------------|--------------------------------|
| 01.02.2017 | WED | 15:15 | 16:45 | Team Captains Meeting and Draw | "Medeu" High-Mountain Ice Rink |
|            |     | 16:00 | 17:30 | Official Training M/W          | "Medeu" High-Mountain Ice Rink |
|            |     | 20:00 |       | Medal-Awarding Ceremony        | Medal Plaza                    |
| 02.02.2017 | THU | 9:00  | 10:45 | Official Training M/W          | "Medeu" High-Mountain Ice Rink |
|            |     | 11:00 | 12:50 | 500m W                         | "Medeu" High-Mountain Ice Rink |
|            |     | 13:00 | 14:35 | 1500m M                        | "Medeu" High-Mountain Ice Rink |
|            |     | 14:45 | 16:15 | Team Captains Meeting and Draw | "Medeu" High-Mountain Ice Rink |
|            |     | 16:00 | 17:30 | Official Training M/W          | "Medeu" High-Mountain Ice Rink |
|            |     | 20:00 |       | Medal-Awarding Ceremony        | Medal Plaza                    |
| 03.02.2017 | FRI | 9:00  | 10:45 | Official Training M/W          | "Medeu" High-Mountain Ice Rink |
|            |     | 11:00 | 12:30 | 5000m W                        | "Medeu" High-Mountain Ice Rink |
|            |     | 13:00 | 14:15 | 1000m M                        | "Medeu" High-Mountain Ice Rink |
|            |     | 14:30 | 16:00 | Team Captains Meeting and Draw | "Medeu" High-Mountain Ice Rink |
|            |     | 16:00 | 17:30 | Official Training M/W          | "Medeu" High-Mountain Ice Rink |
|            |     | 20:00 |       | Medal-Awarding Ceremony        | Medal Plaza                    |
| 04.02.2017 | SAT | 9:00  | 10:45 | Official Training M/W          | "Medeu" High-Mountain Ice Rink |
|            |     | 11:00 | 12:15 | 1000m W                        | "Medeu" High-Mountain Ice Rink |
|            |     | 13:00 | 15:40 | 10000m M                       | "Medeu" High-Mountain Ice Rink |
|            |     | 15:45 | 17:15 | Team Captains Meeting and Draw | "Medeu" High-Mountain Ice Rink |
|            |     | 16:00 | 17:30 | Official Training M/W          | "Medeu" High-Mountain Ice Rink |
|            |     | 20:00 |       | Medal-Awarding Ceremony        | Medal Plaza                    |

|            |     |       |       |                                |                                |
|------------|-----|-------|-------|--------------------------------|--------------------------------|
| 05.02.2017 | SUN | 9:00  | 10:45 | Official Training M/W          | "Medeu" High-Mountain Ice Rink |
|            |     | 11:00 | 11:50 | Team Pursuit W (1-5)           | "Medeu" High-Mountain Ice Rink |
|            |     | 13:00 | 13:55 | Team Pursuit M (1-6)           | "Medeu" High-Mountain Ice Rink |
|            |     | 14:00 | 15:30 | Team Captains Meeting and Draw | "Medeu" High-Mountain Ice Rink |
|            |     | 16:00 | 17:30 | Official Training M/W          | "Medeu" High-Mountain Ice Rink |
|            |     | 20:00 |       | Medal-Awarding Ceremony        | Medal Plaza                    |
| 06.02.2017 | MON | 9:00  | 10:45 | Official Training M/W          | "Medeu" High-Mountain Ice Rink |
|            |     | 11:00 | 11:30 | Mass Start W (1 race)          | "Medeu" High-Mountain Ice Rink |
|            |     | 13:00 | 13:30 | Mass Start M (2 race)          | "Medeu" High-Mountain Ice Rink |
|            |     | 13:45 | 15:15 | Team Captains Meeting          | "Medeu" High-Mountain Ice Rink |
|            |     | 20:00 |       | Medal-Awarding Ceremony        | Medal Plaza                    |

## 8.4. ATHLETES' VILLAGE MAP



## 8.5. ALMATY CITY MAP



## PARTNERS OF THE 28<sup>TH</sup> WINTER UNIVERSIADE



## MAIN MEDIA PARTNERS



## OFFICIAL MEDIA PARTNERS





**28<sup>th</sup> WINTER UNIVERSIADE 2017 ALMATY  
ORGANIZING COMMITTEE**

REPUBLIC OF KAZAKHSTAN, ALMATY  
050013, BAYZAKOV STREET, 280  
[WWW.ALMATY2017.COM](http://WWW.ALMATY2017.COM)